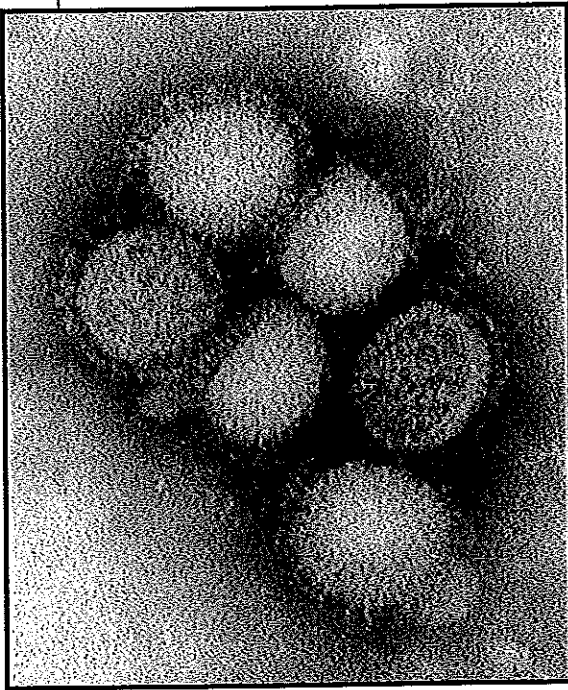


# H1N1 (Swine Flu) Update



**Tuesday, Sept. 22**

**6:30-7:30 pm**

**Nangeroni Education Center,  
Milton Hospital**

Swine flu or H1N1, has dominated the headlines this year. With another flu season approaching, what does the medical community know about this pandemic, and what can you do to keep yourself healthy? How serious is this disease? Will it get worse? Join *Milton Hospital Infection Prevention Manager Judy Menard, RN*, and hear the latest information on infamous public health concern.



AN AFFILIATE OF  
Beth Israel Deaconess  
Medical Center

199 Reedsdale Road, Milton, MA 02186  
DoctorLine: 617-696-8809  
Community Education: 617-696-8810  
[www.miltonhospital.org](http://www.miltonhospital.org)

The care you want. Close to home.