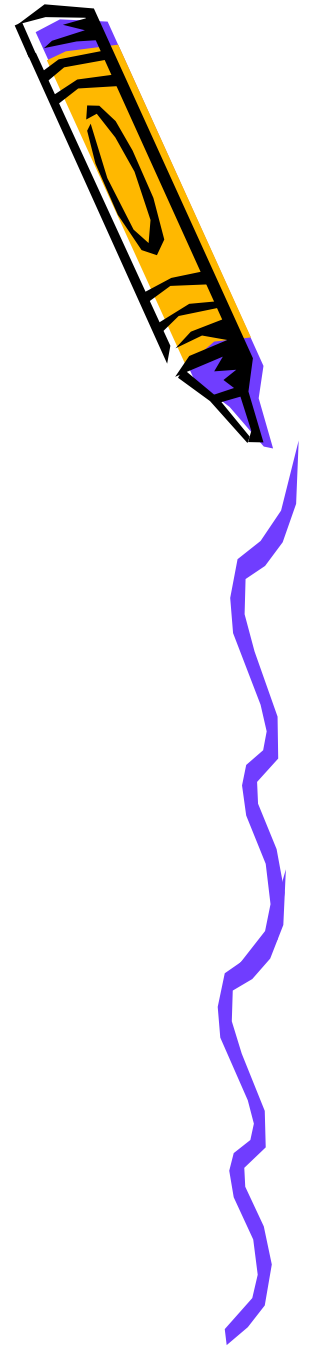
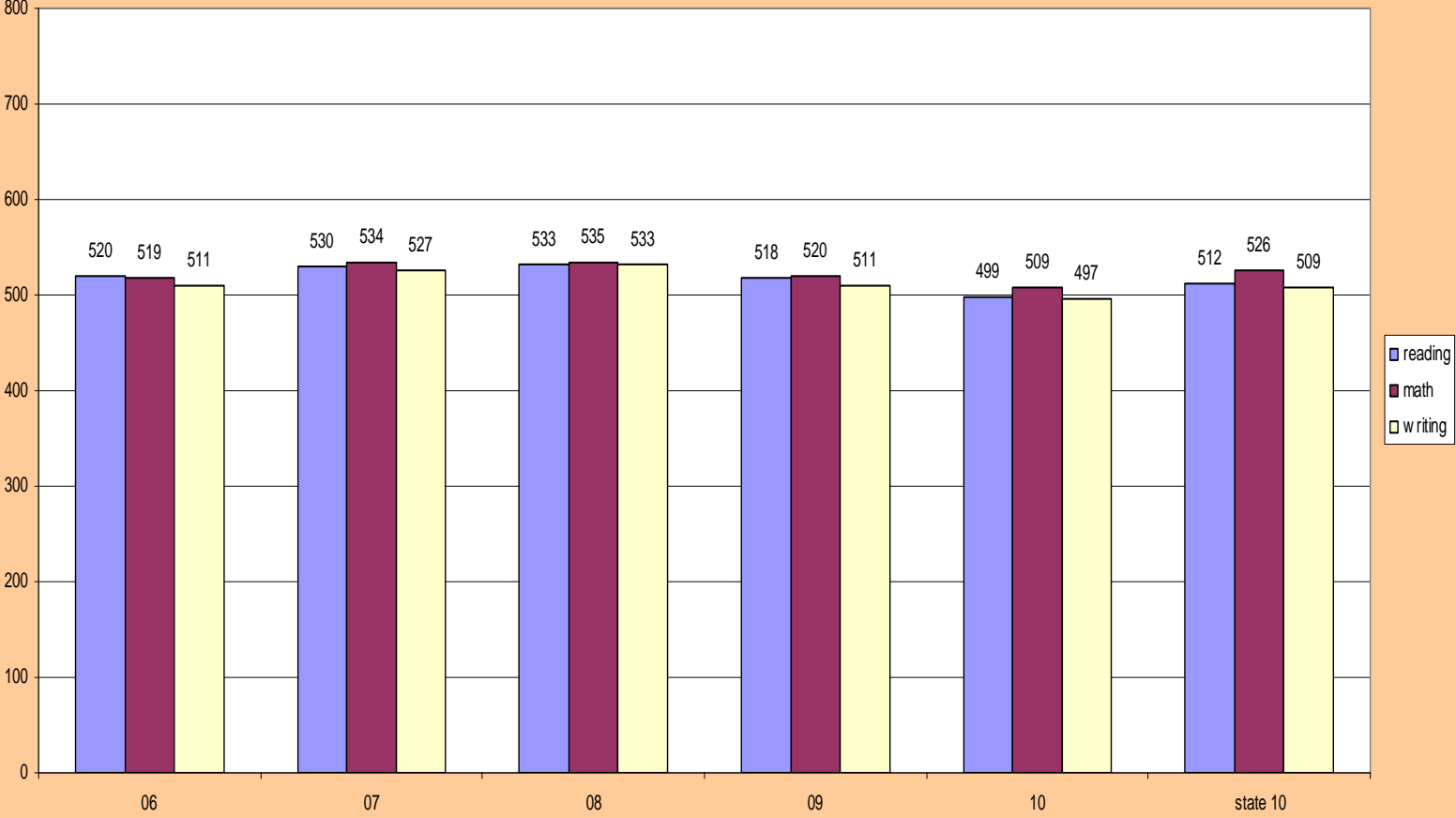


# Recent CEEB Trends

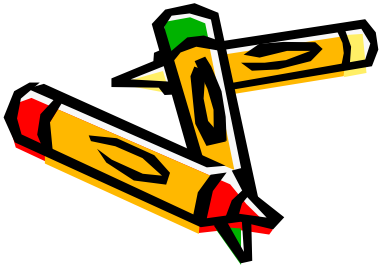
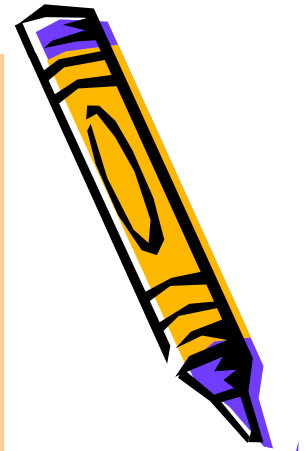
- An overview of SAT and AP performance



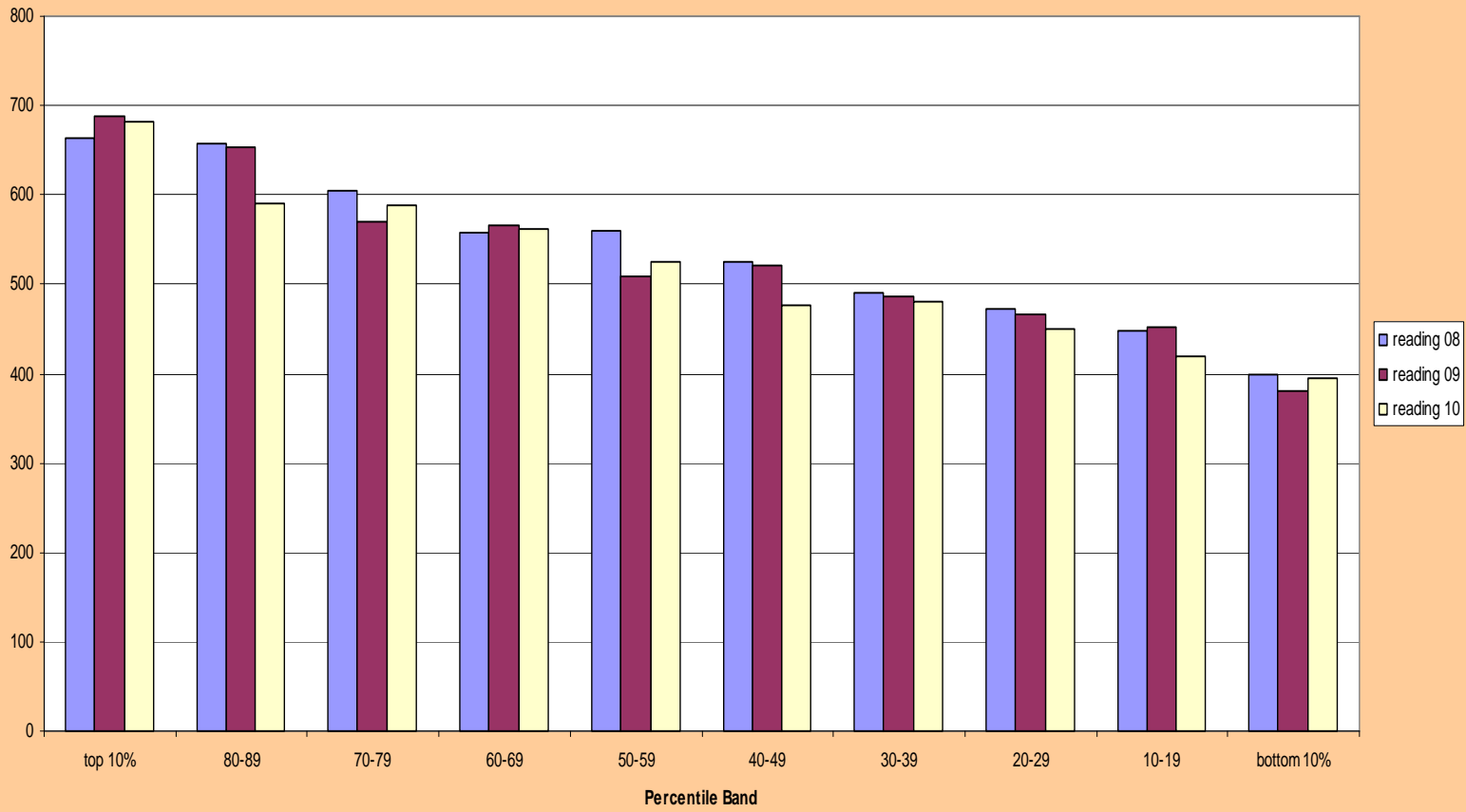
# SAT Averages

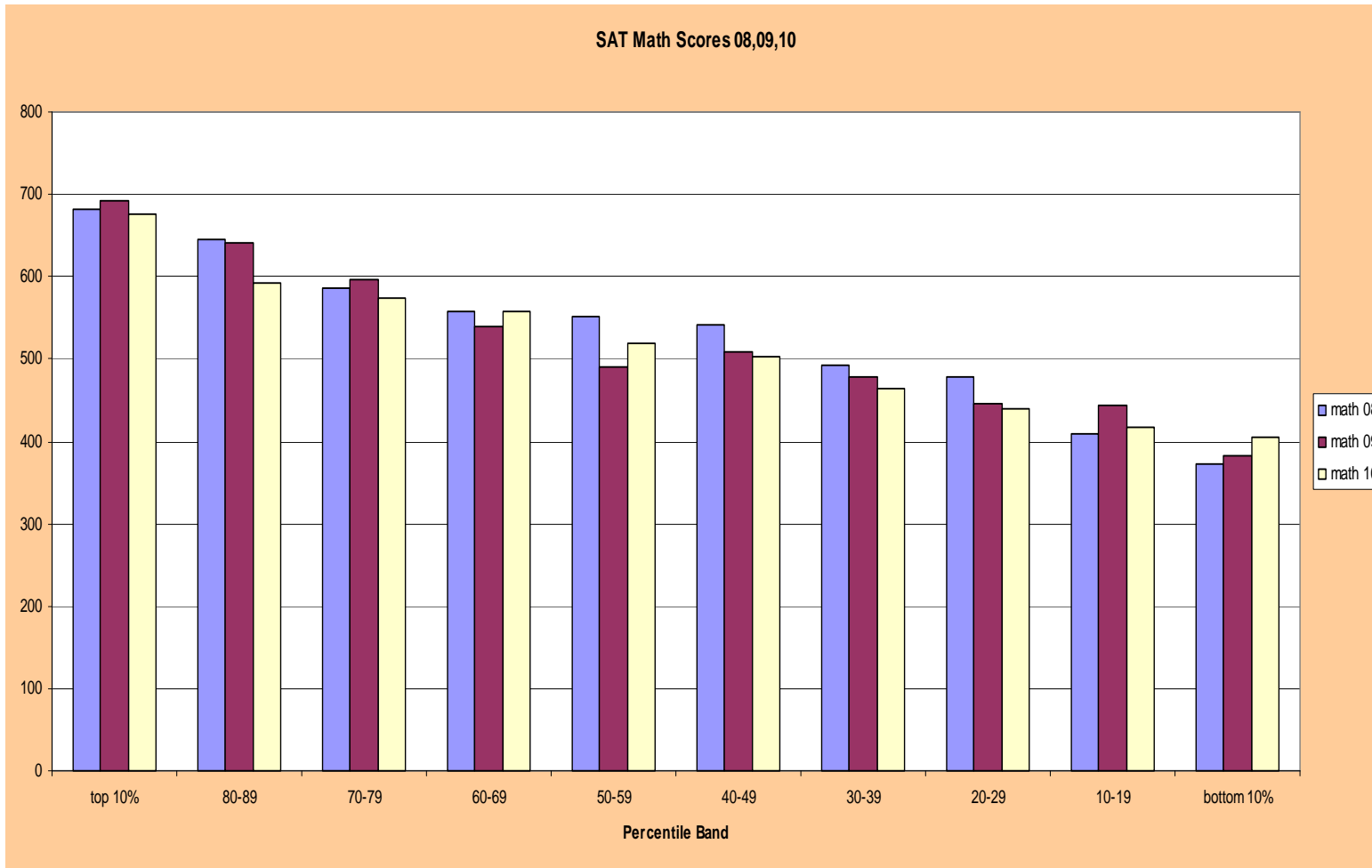


# SAT Averages

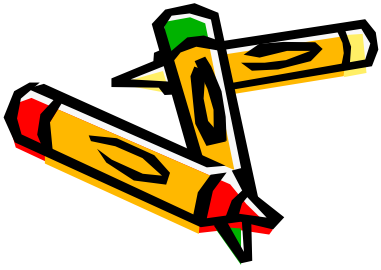
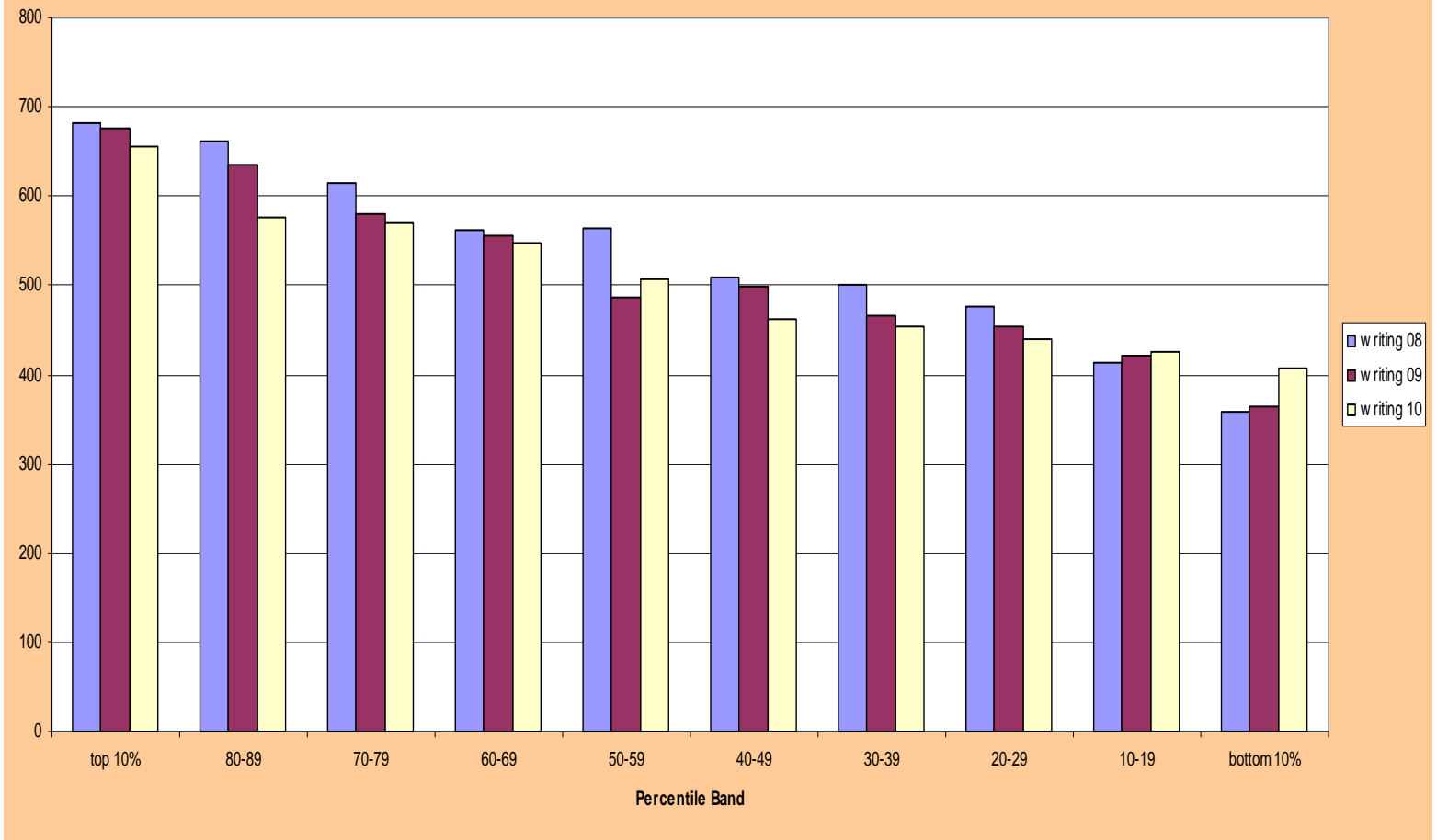
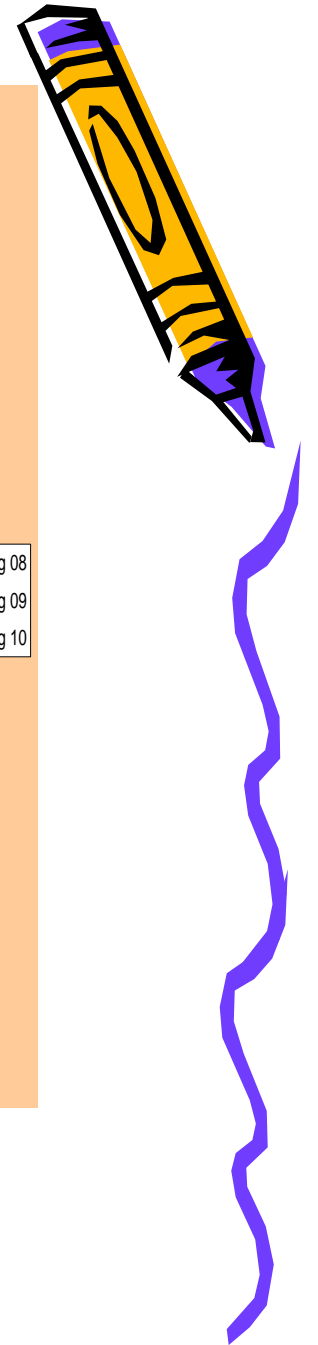


SAT Reading Scores 08,09,10

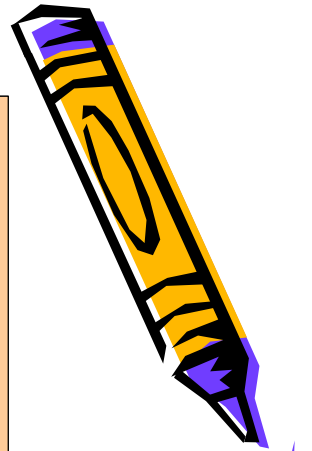
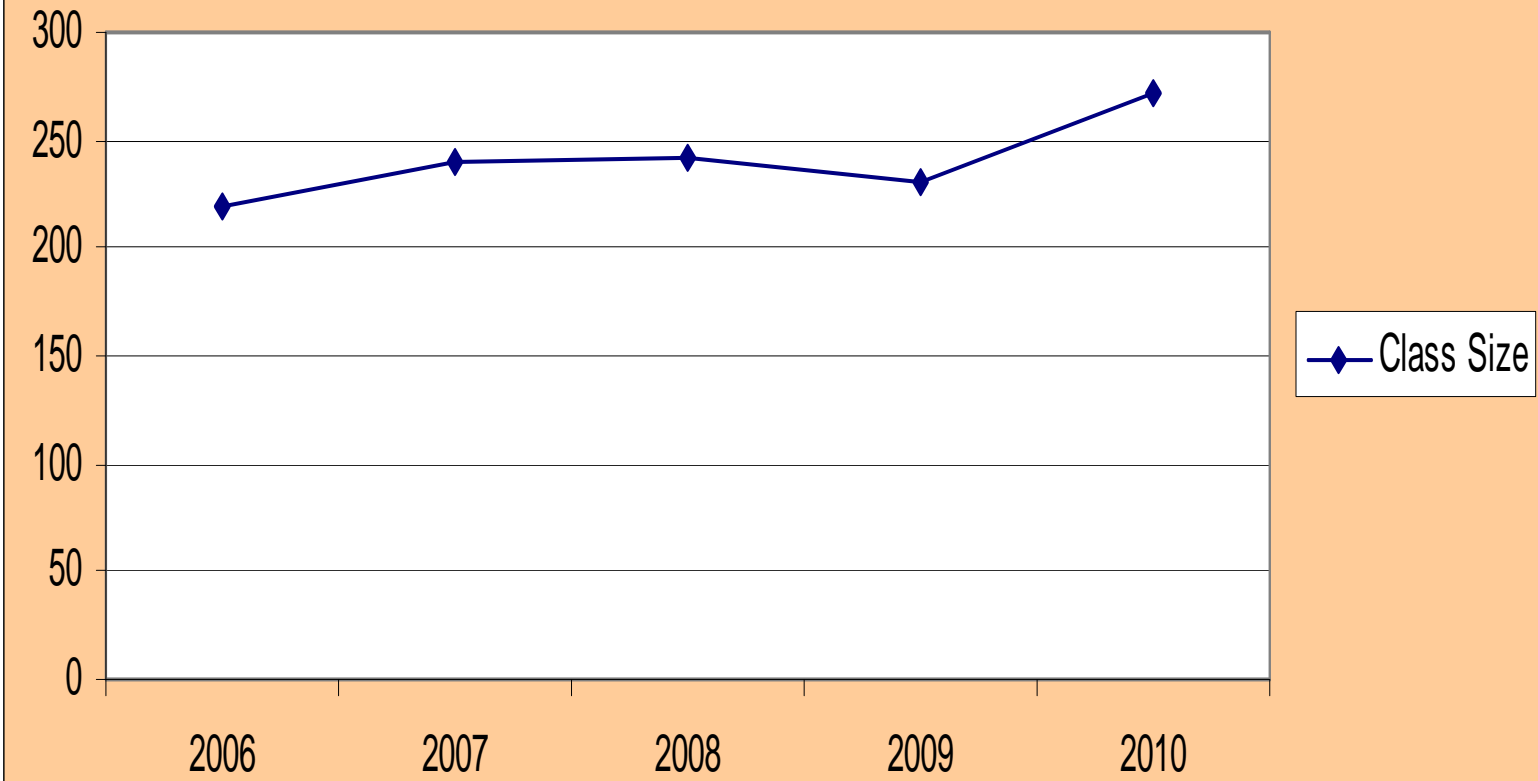




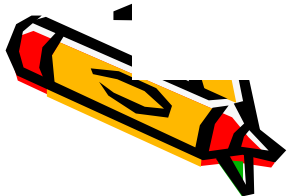
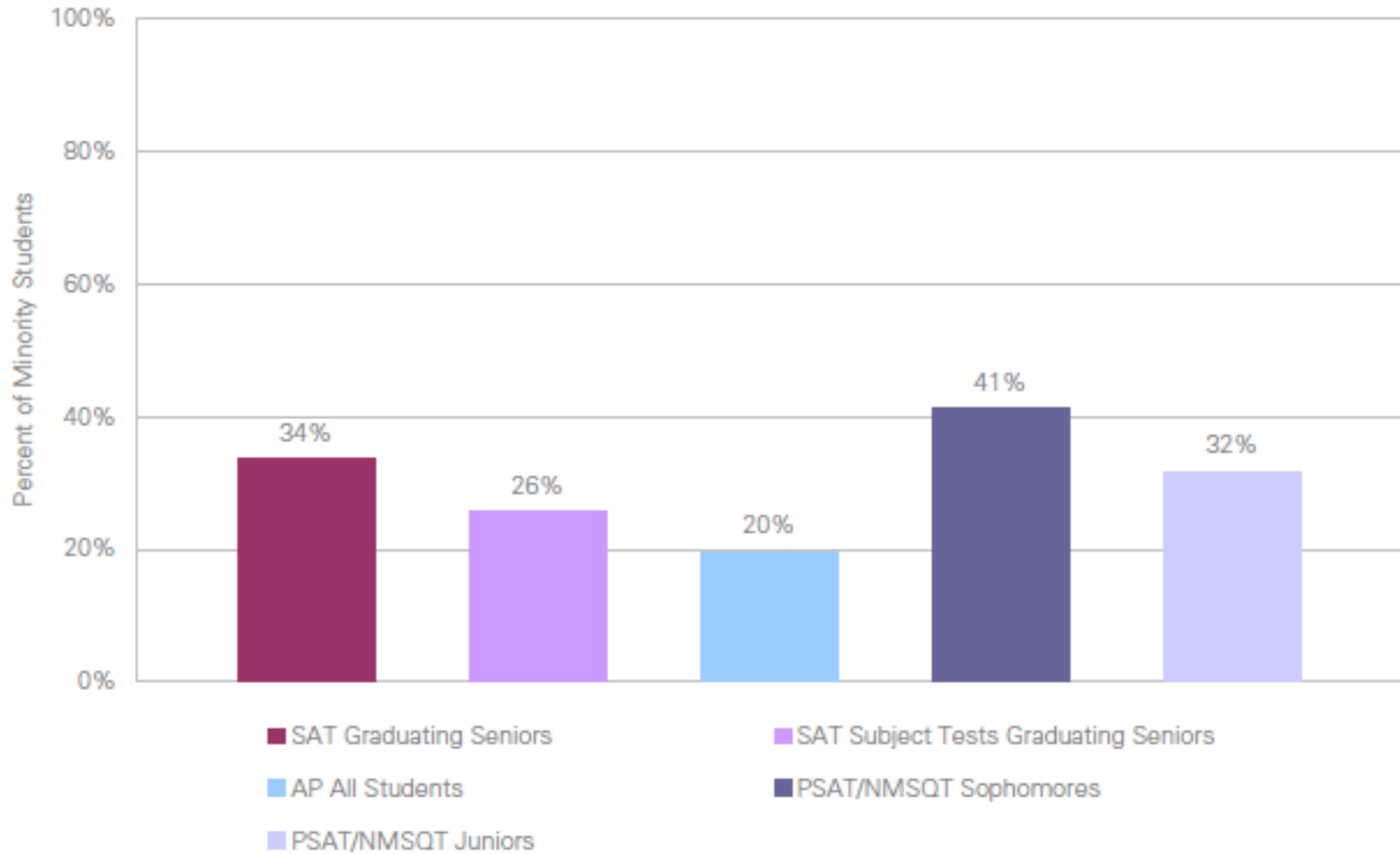
SAT Writing Scores 08,09,10



Class Size

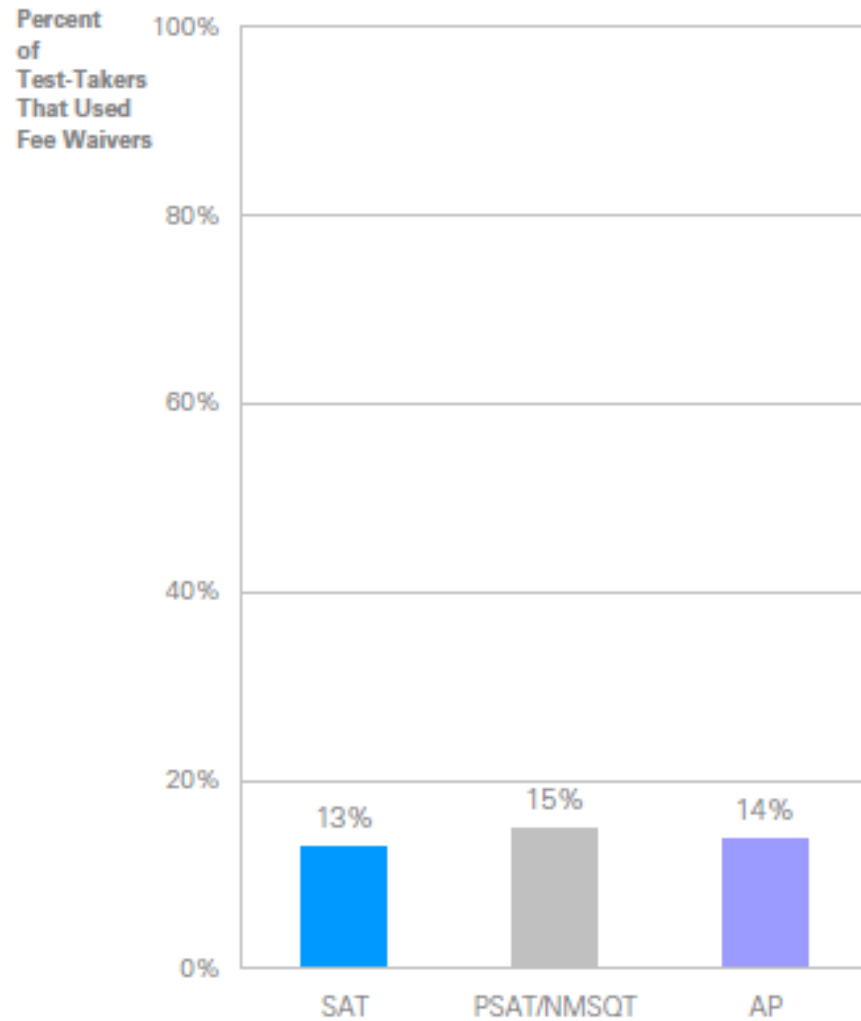


**OVERVIEW: Percent of Test-Takers Self-Reported as Minority Students**

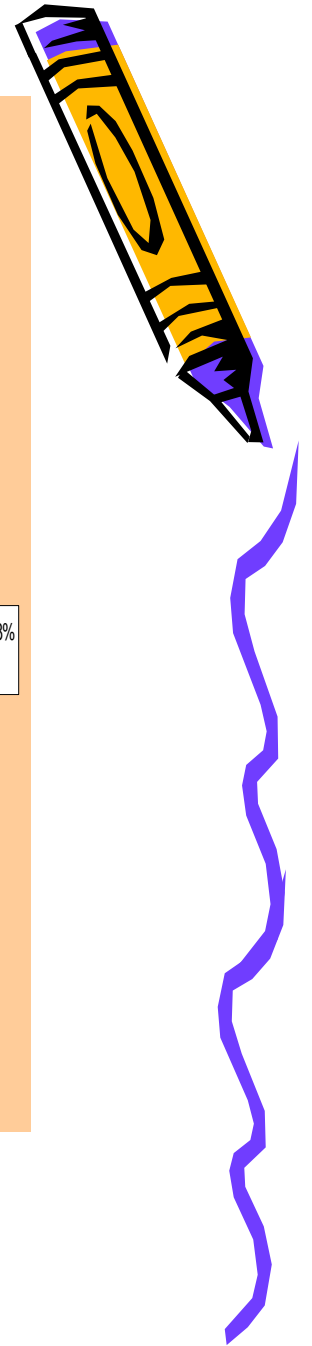
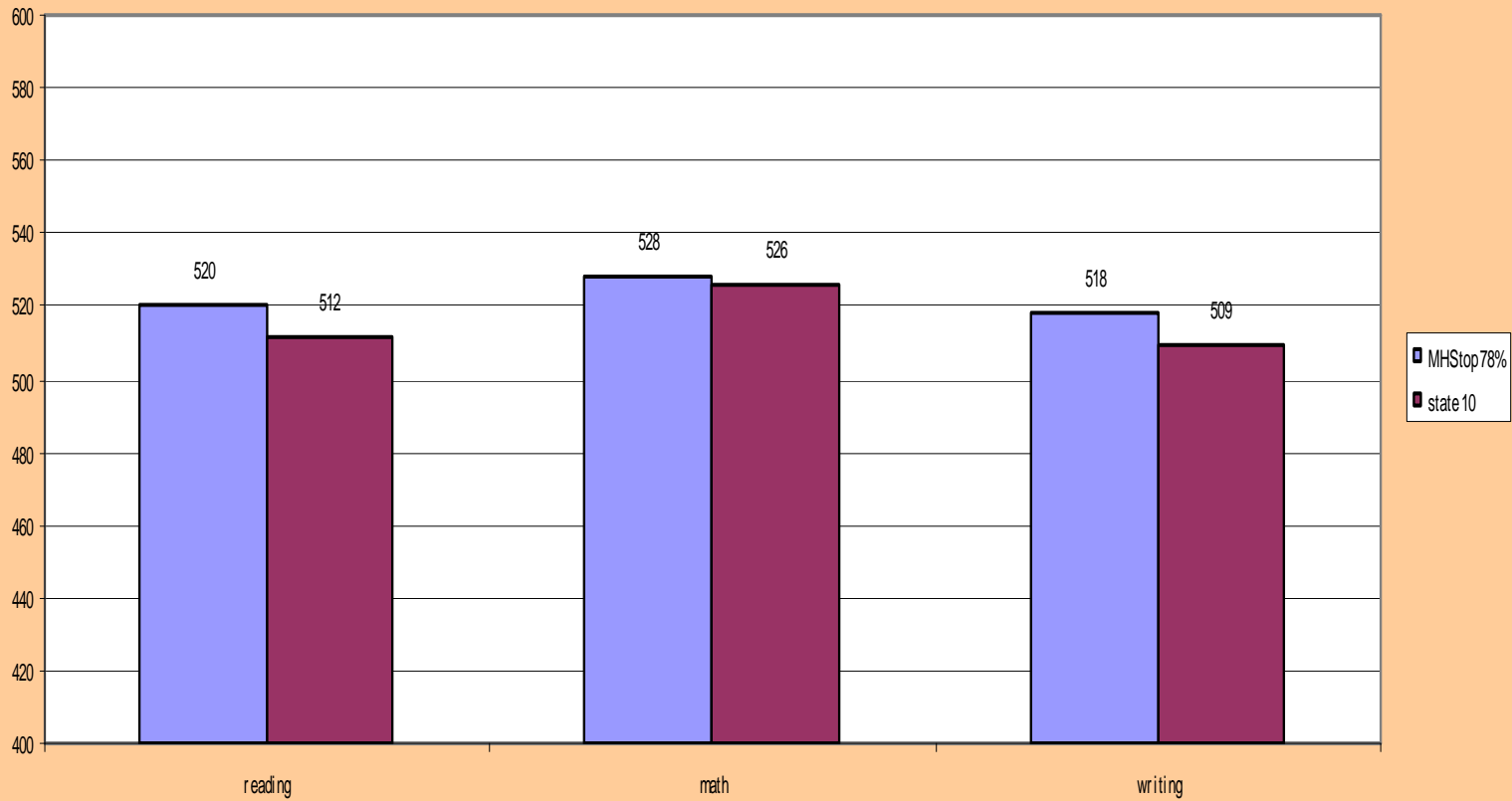


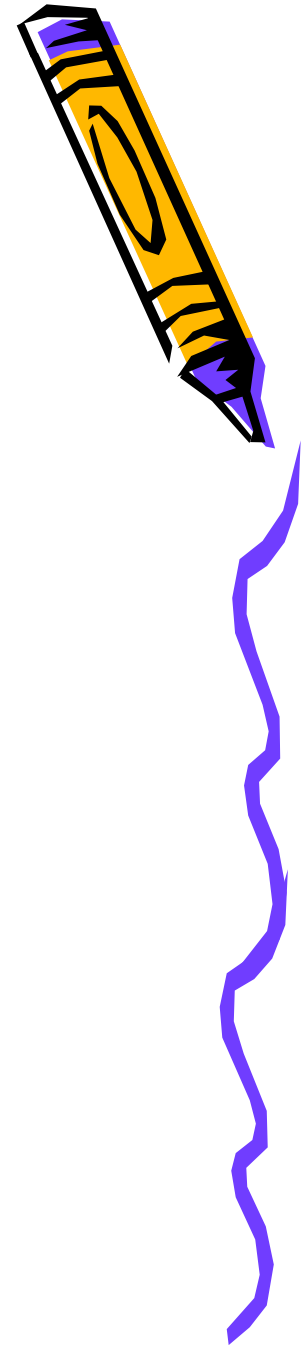


OVERVIEW: Fee Waivers/Fee Reduction for SAT, AP and PSAT/NMSQT

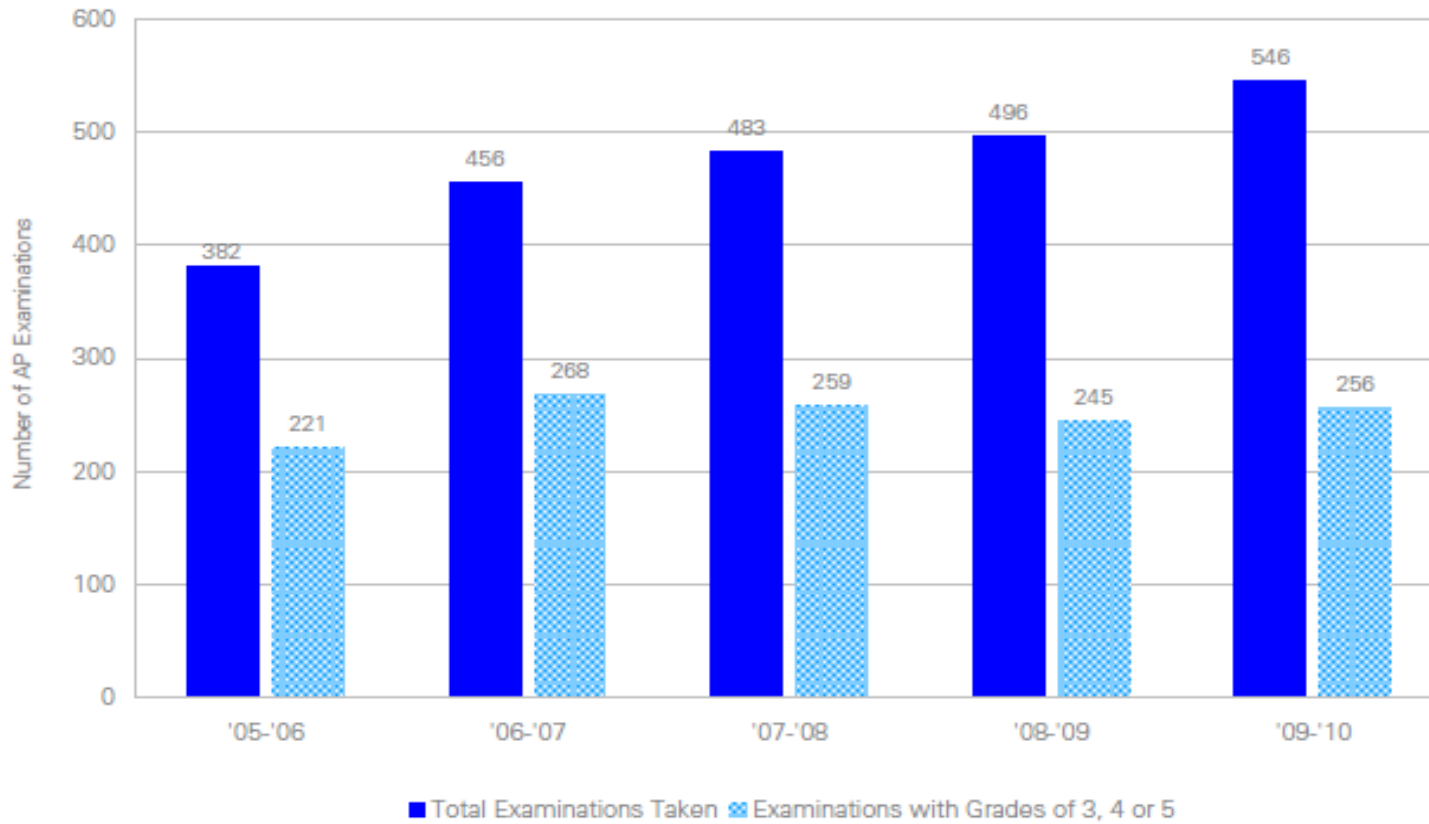


## Comparable Groups





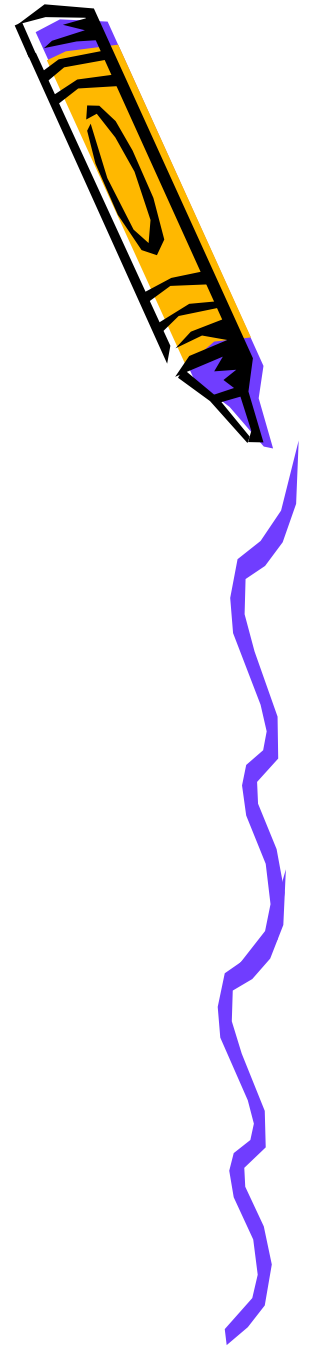
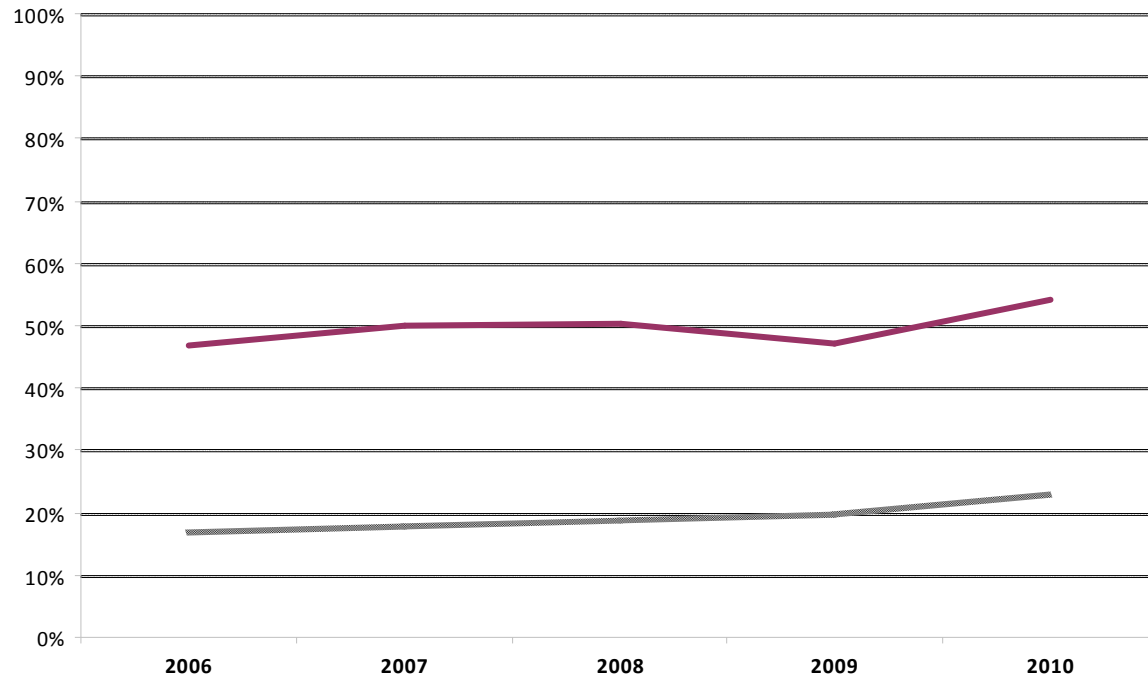
**AP: Number of Examinations and Number of Examinations with Grades of 3, 4 or 5**



# Percent of Juniors/Seniors enrolled in at least one AP course Milton vs State

Milton

state



# Going Forward

- Adding SAT problems to regular review sets (i.e. MCAS)
- Analyze SAT Review Classes
  - Effectiveness
  - Attendance
- Continue discussion of curriculum/course alignment
- Department review of AP courses & trends

