

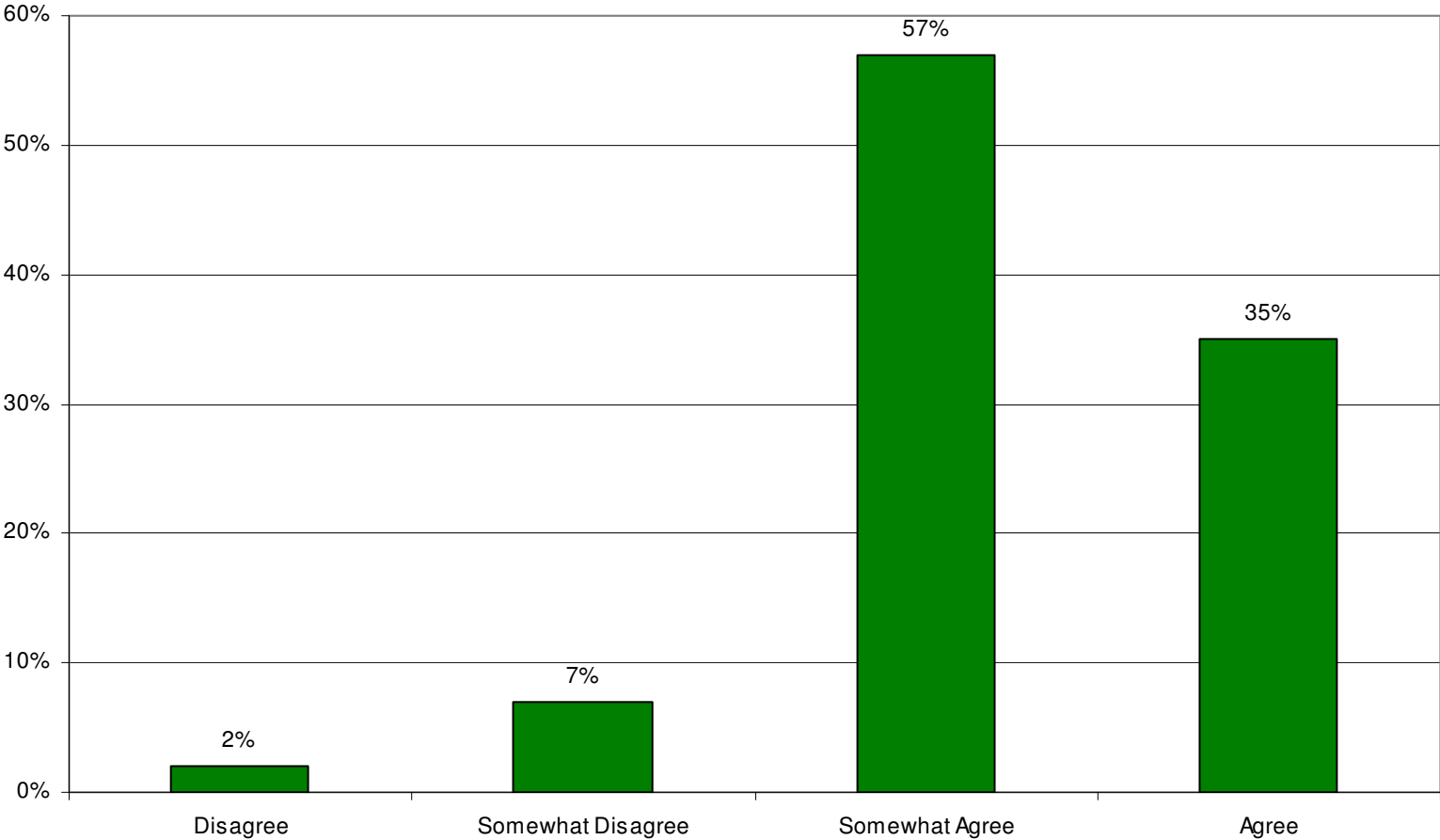
Student Achievement

**Milton Public Schools
October 16, 2007**

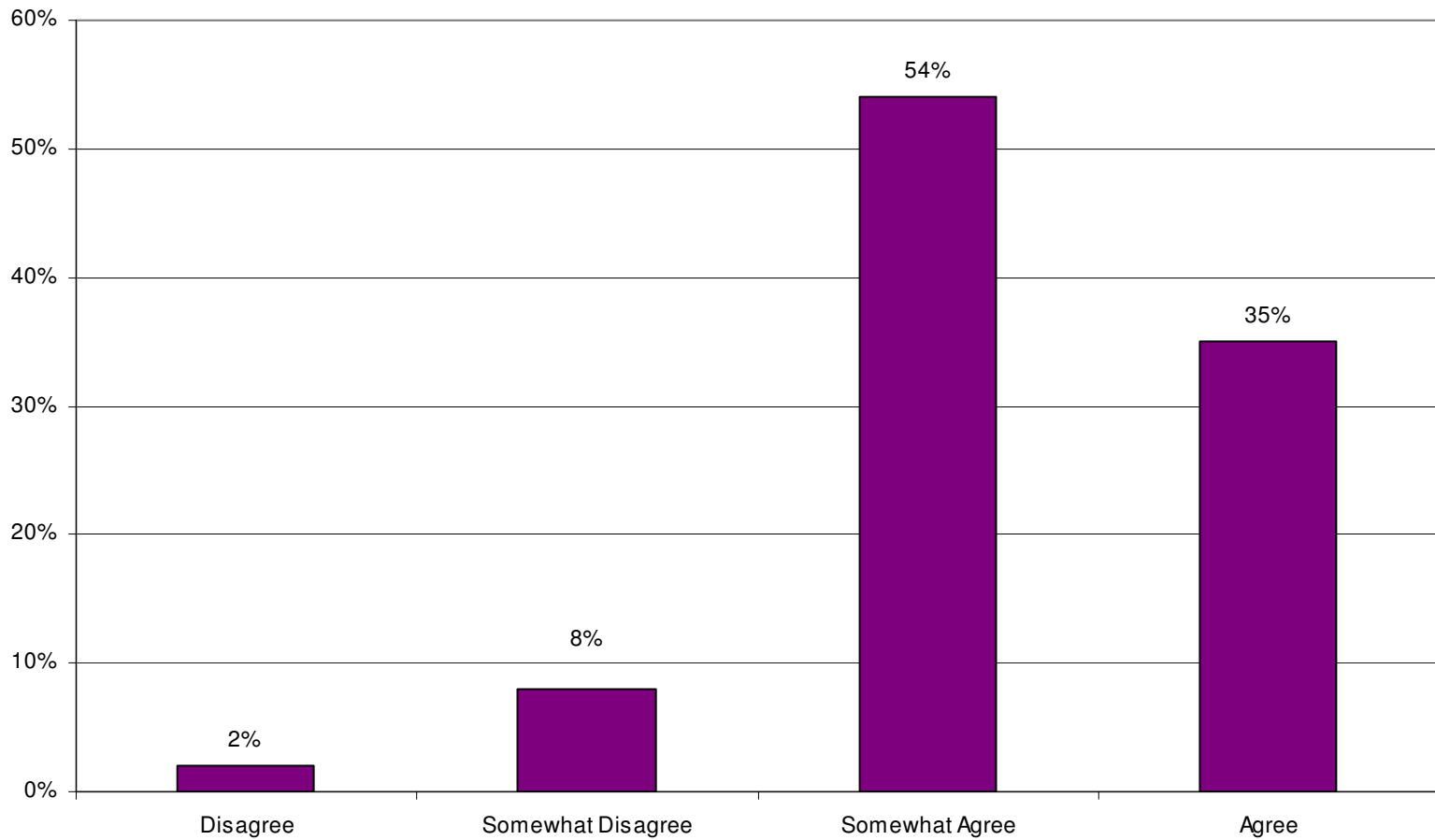
MPG SC Meeting 10-16-07

**Raising student achievement
requires commitment and
attention from
EVERY
level of the organization.**

Staff Survey Q5 - Student Achievement has improved as a result of the efforts to improve instruction over the past three years.

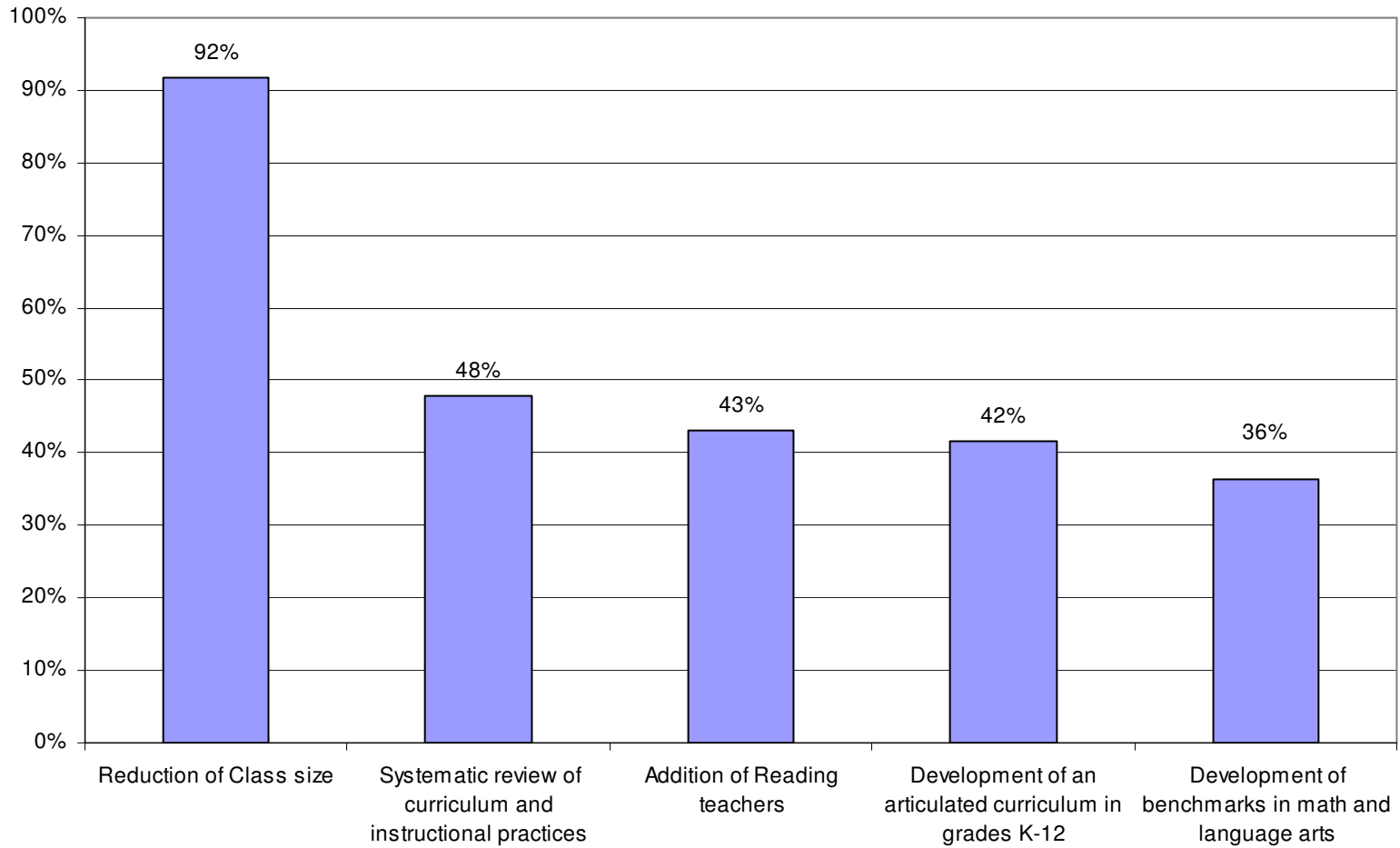


Staff Survey Q6 - The district teams are important to the overall improvement of the system.



MPG SC Meeting 10-16-07

Staff Survey Q3 - Top 5 initiatives that contribute most to raising student achievement



Elementary

- **Reduction of Class Size**
- **Addition of Reading Teachers**
- **Intro of Uninterrupted Inst Time (1&2)**
- **Development of Co-taught Classes**
- **Introduction of Full Day K**

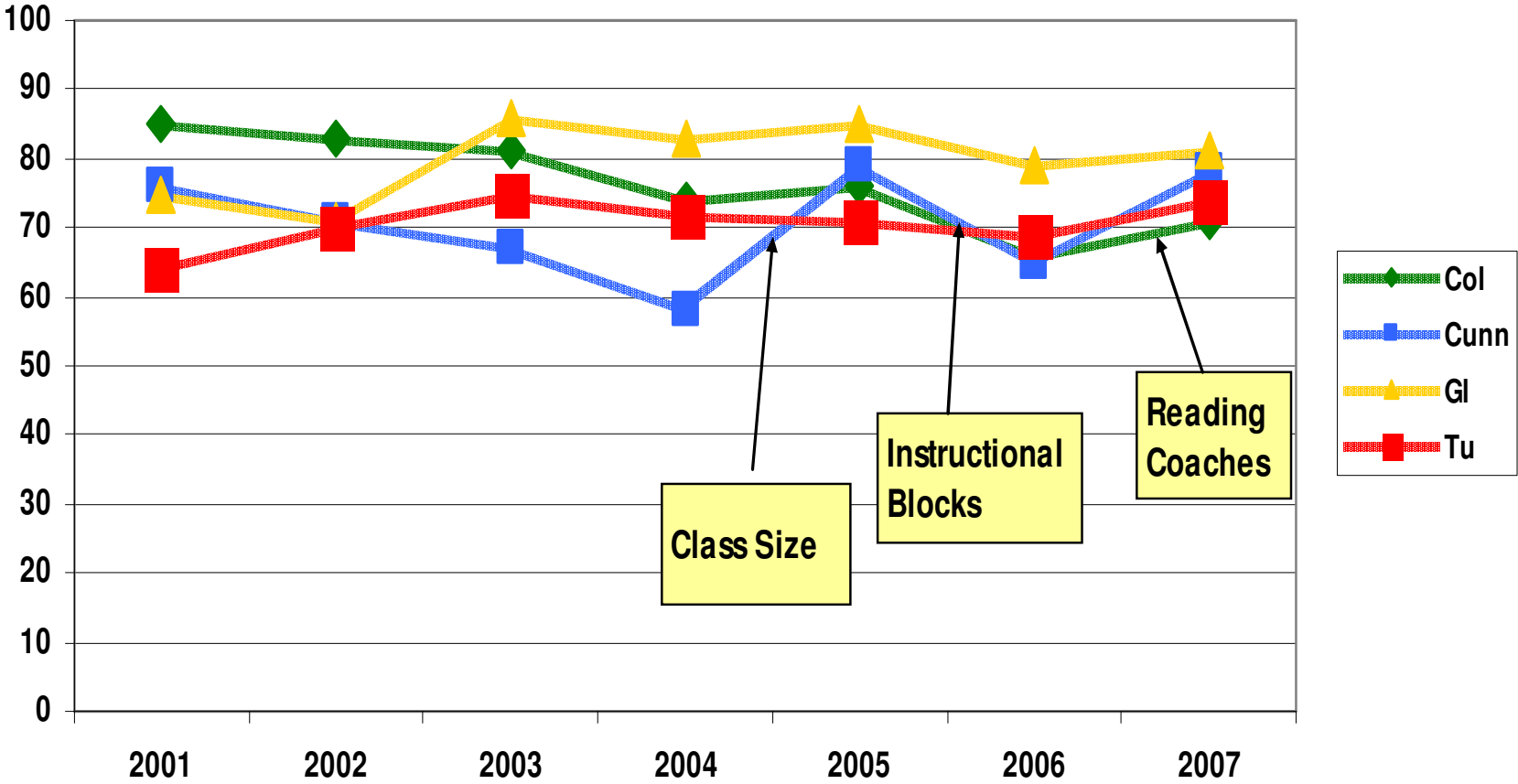
Middle School

- **Reduction of Class Size**
- **Development of K-12 Curriculum**
- **Systematic Instructional Reviews**
- **Development of Benchmarks**
- **Systematic replacement of materials**

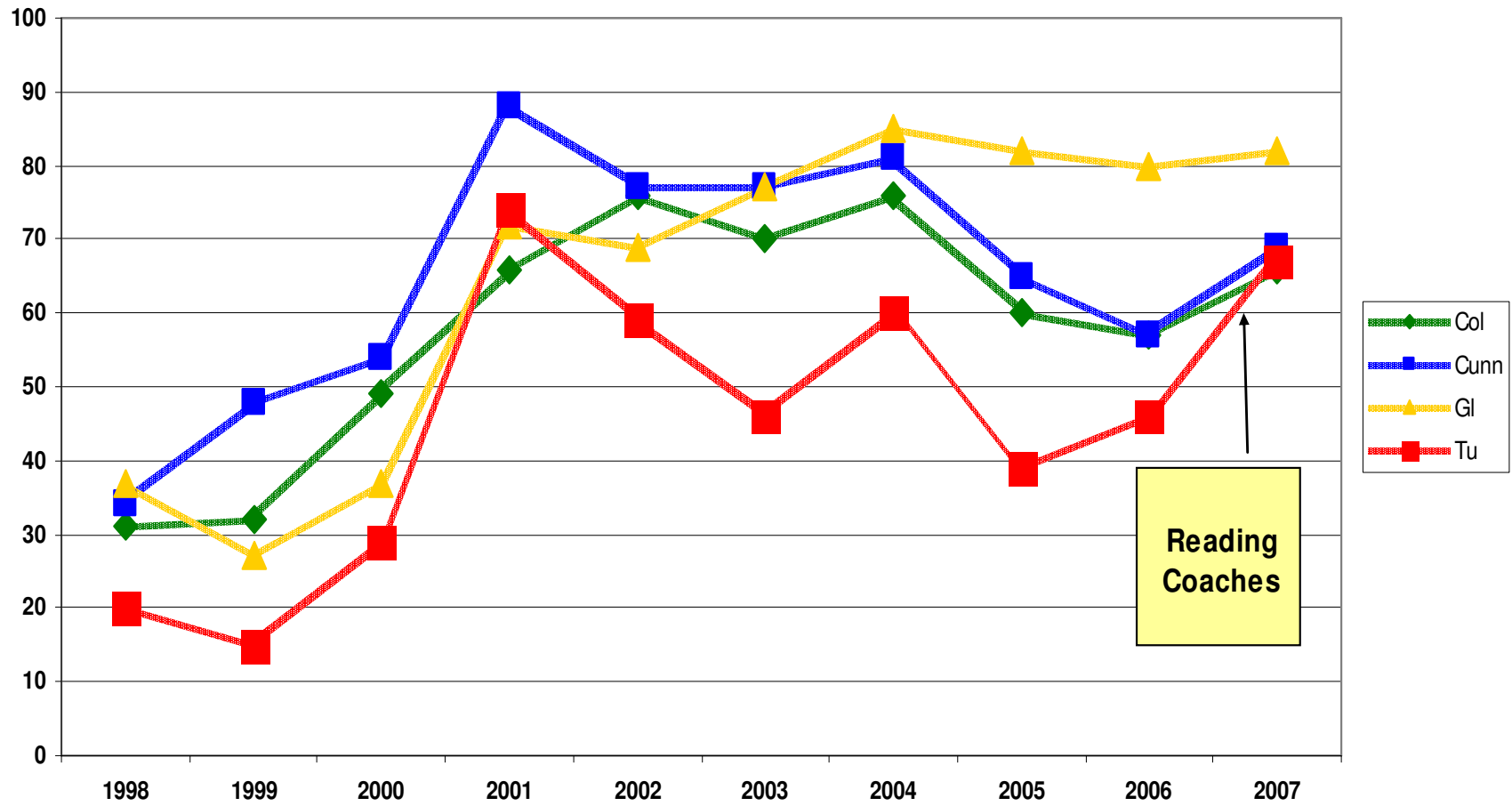
High School

- **Reduction of Class Size**
- **Systematic Instructional Review**
- **High School Alternative Program**
- **Development of K-12 Curriculum**
- **Development of Benchmarks**

Gr 3 Reading -- Prof/Prof +



Gr 4 ELA Comparison



MPG SC Meeting 10-16-07

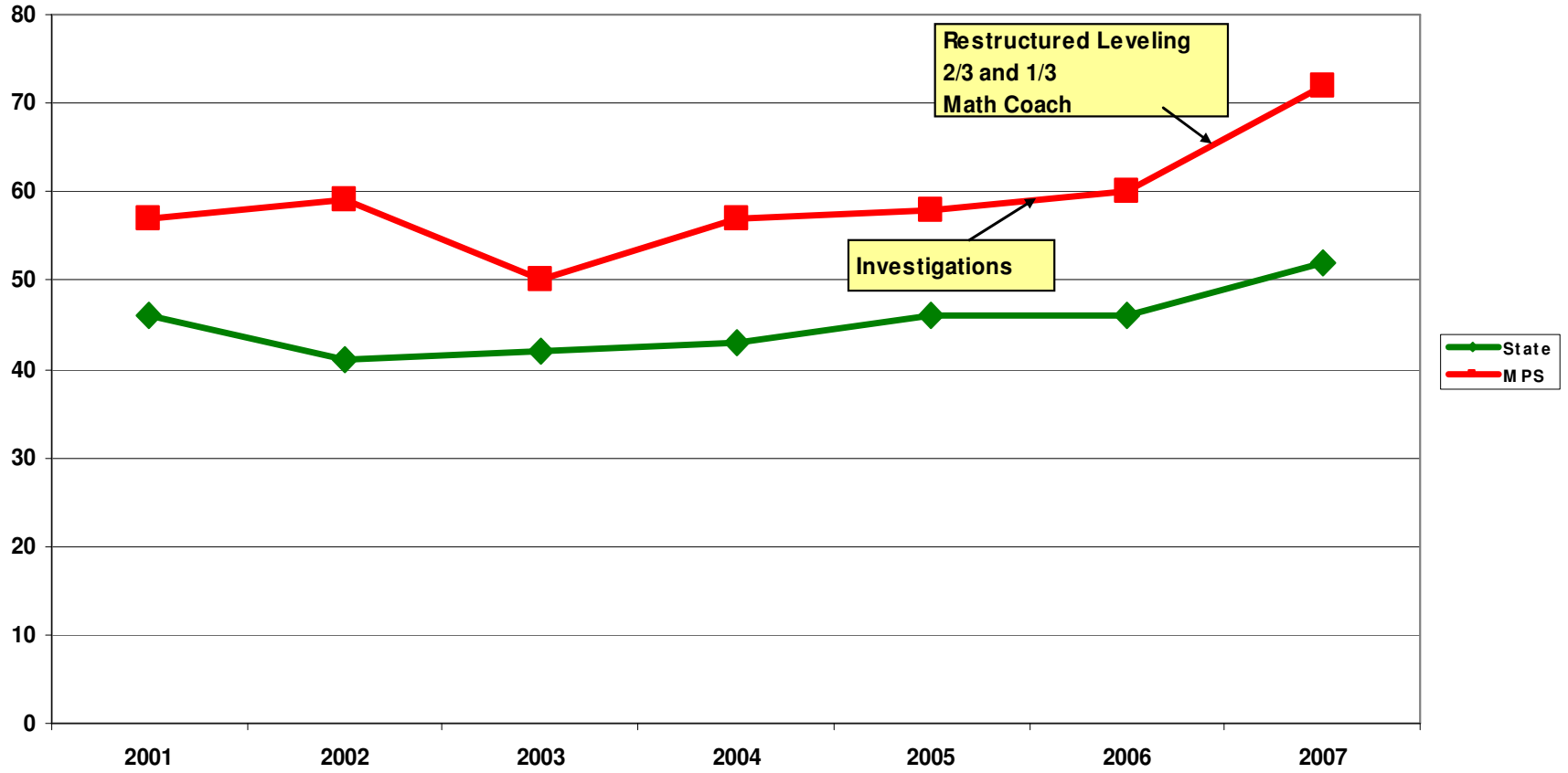
Gr 4 Math -- A/P



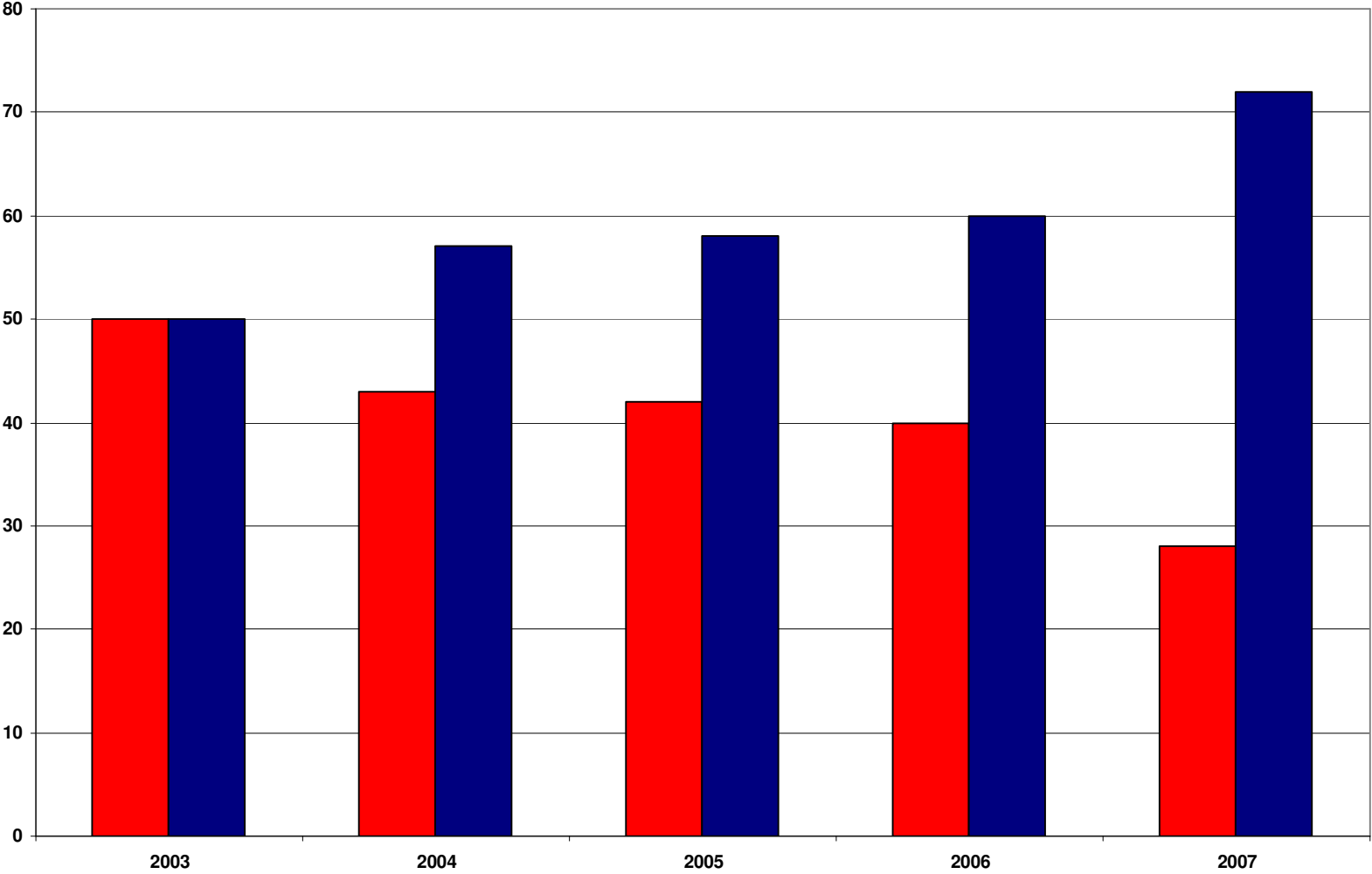
Elementary

- **There has been great improvement in MCAS scores at the Tucker School over the past 2-3 years.**
- **There is no significant difference in achievement among the 4 elementary schools as measured by the MCAS.**

Grade 6 Math

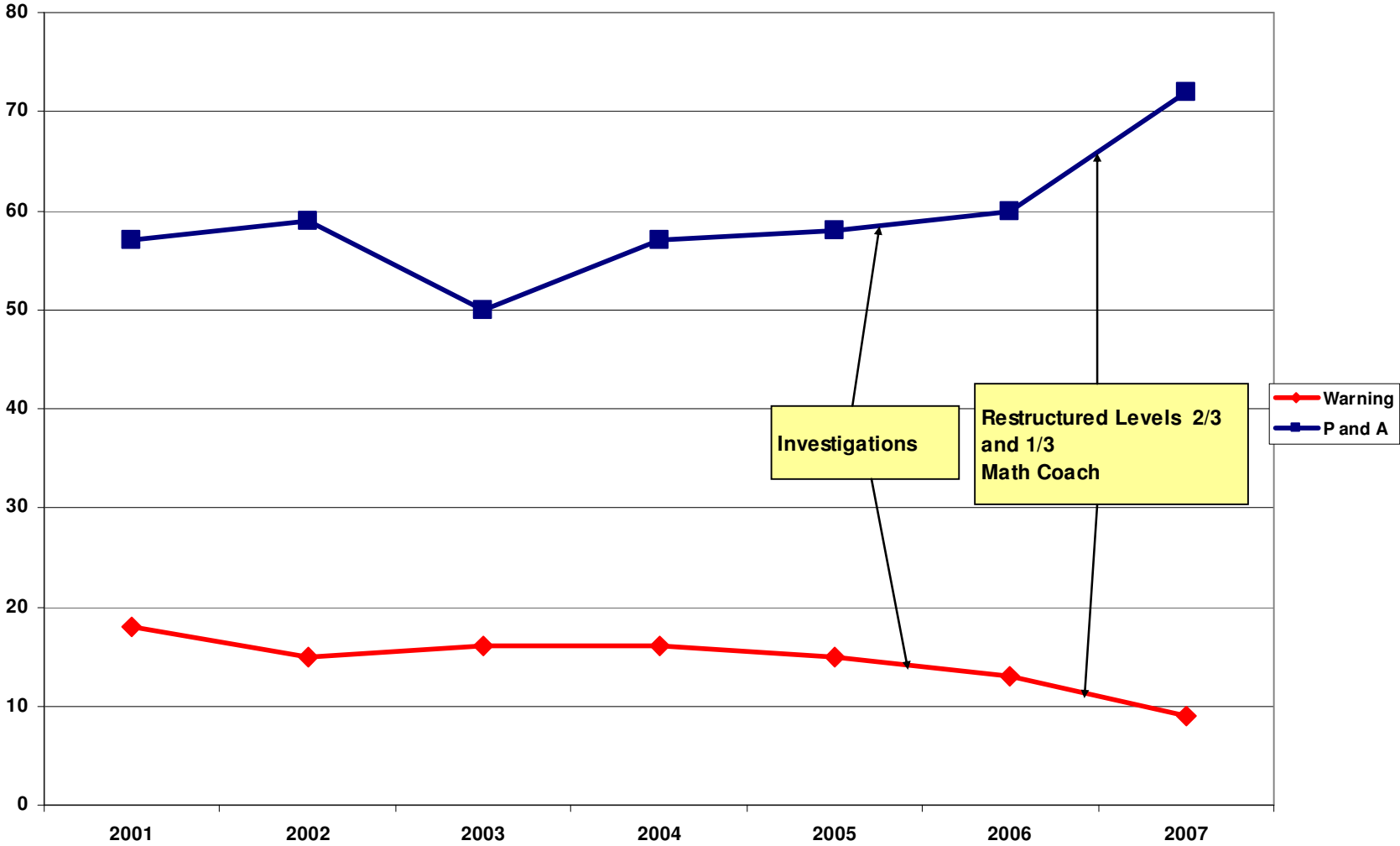


Gr 6 Math Annual Comparison



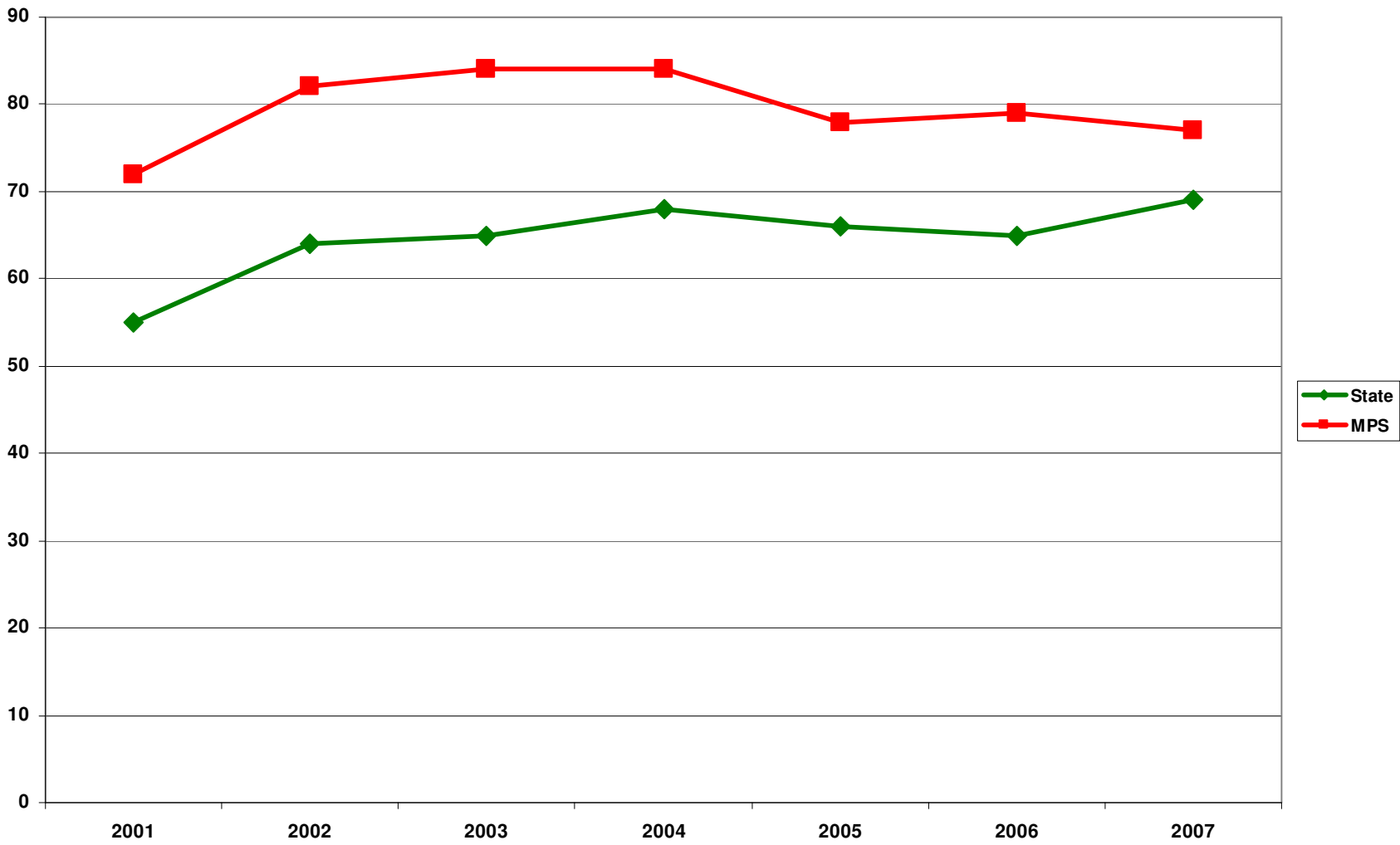
MPG SC Meeting 10-16-07

Grade 6 Comparison of Prof/Adv and Warning



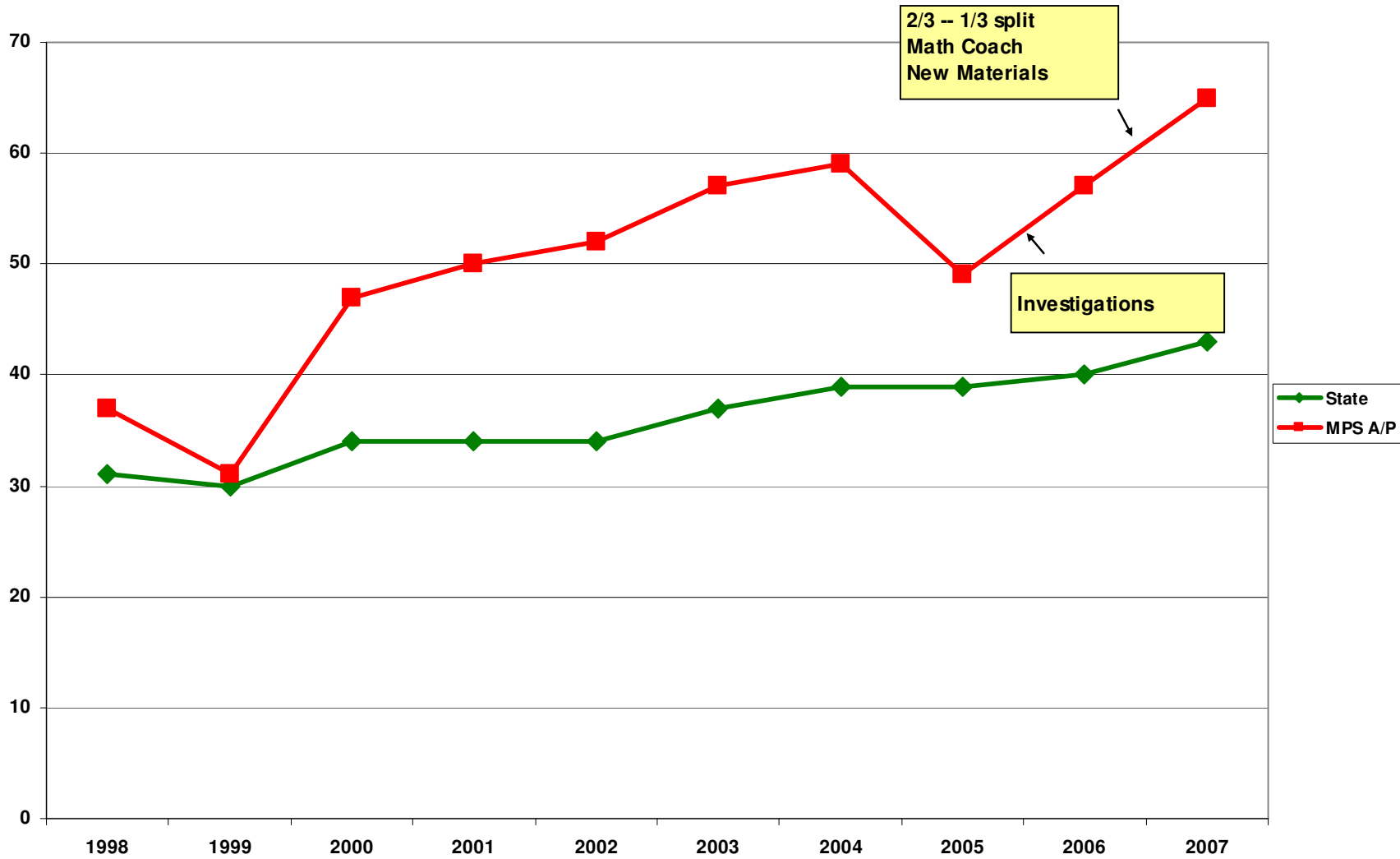
MPG SC Meeting 10-16-07

Grade 7 ELA Prof/Adv



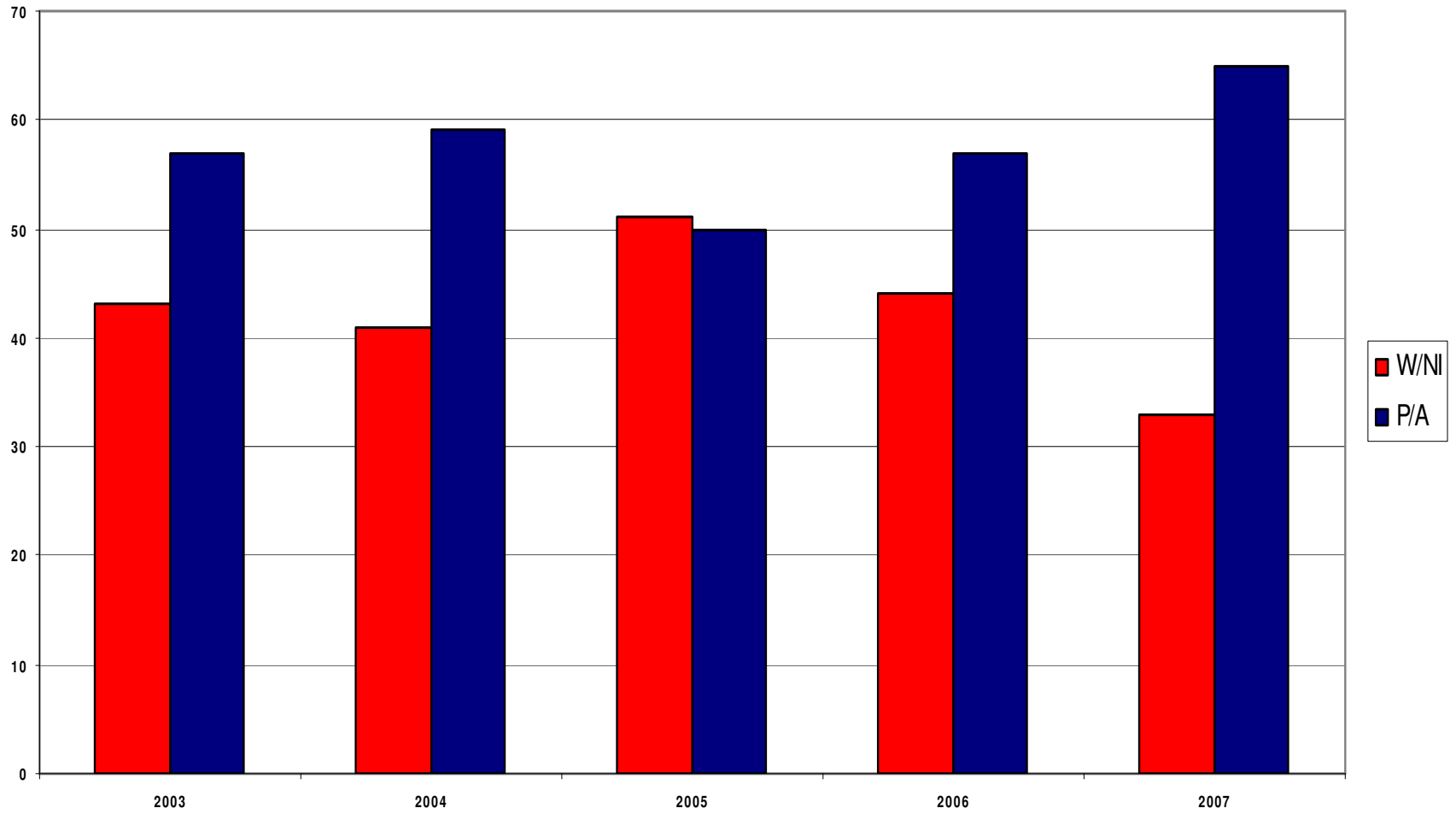
MPG SC Meeting 10-16-07

Gr. 8 Math



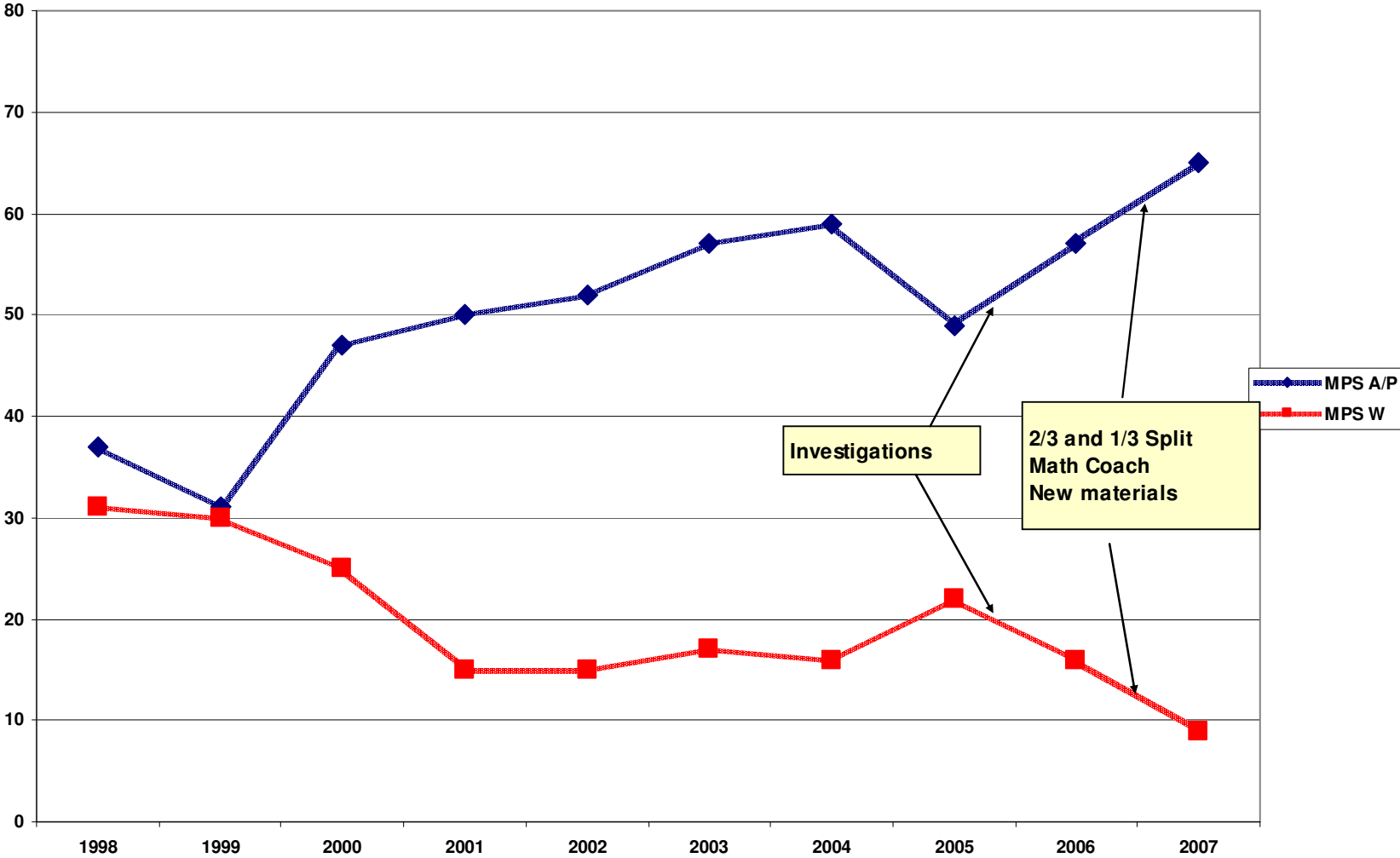
MPG SC Meeting 10-16-07

Gr 8 Annual Comparison



MPG SC Meeting 10-16-07

Gr 8 Math Comparison -- A/P and W

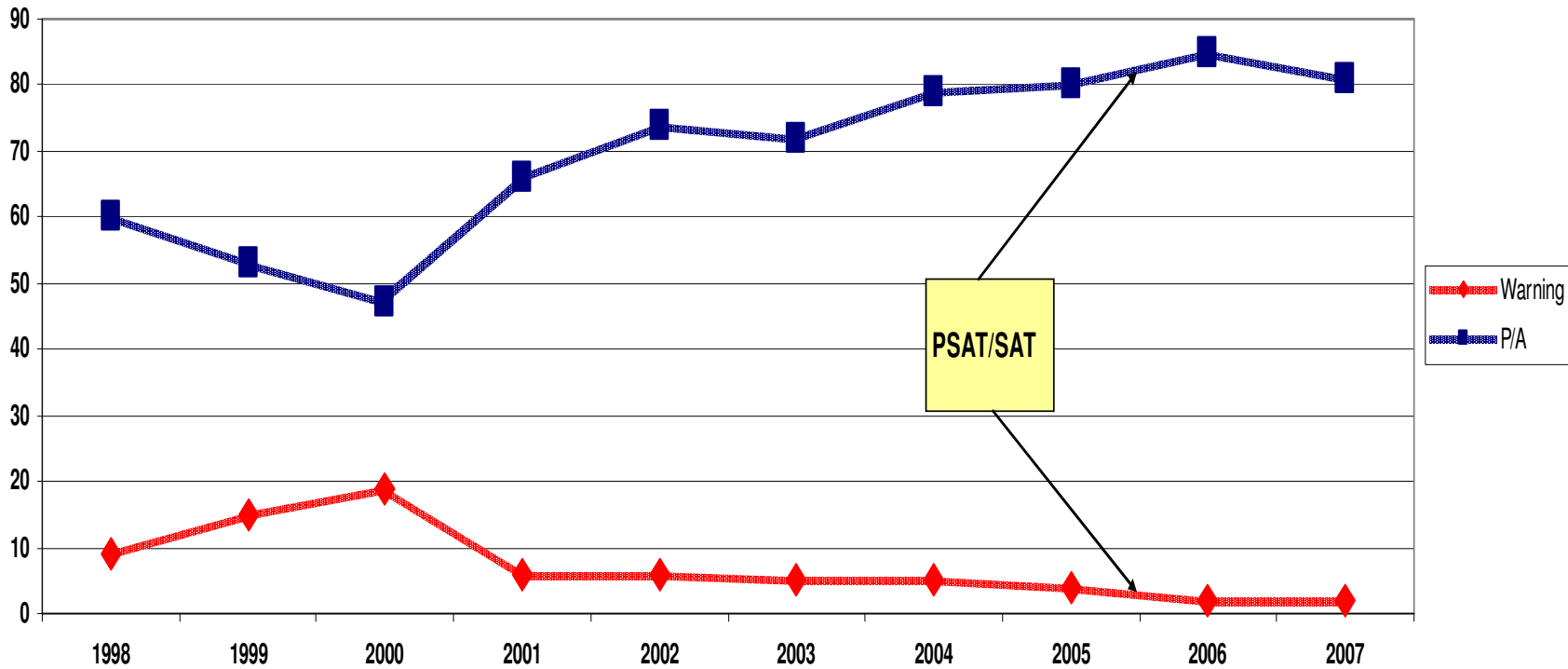


MPG SC Meeting 10-16-07

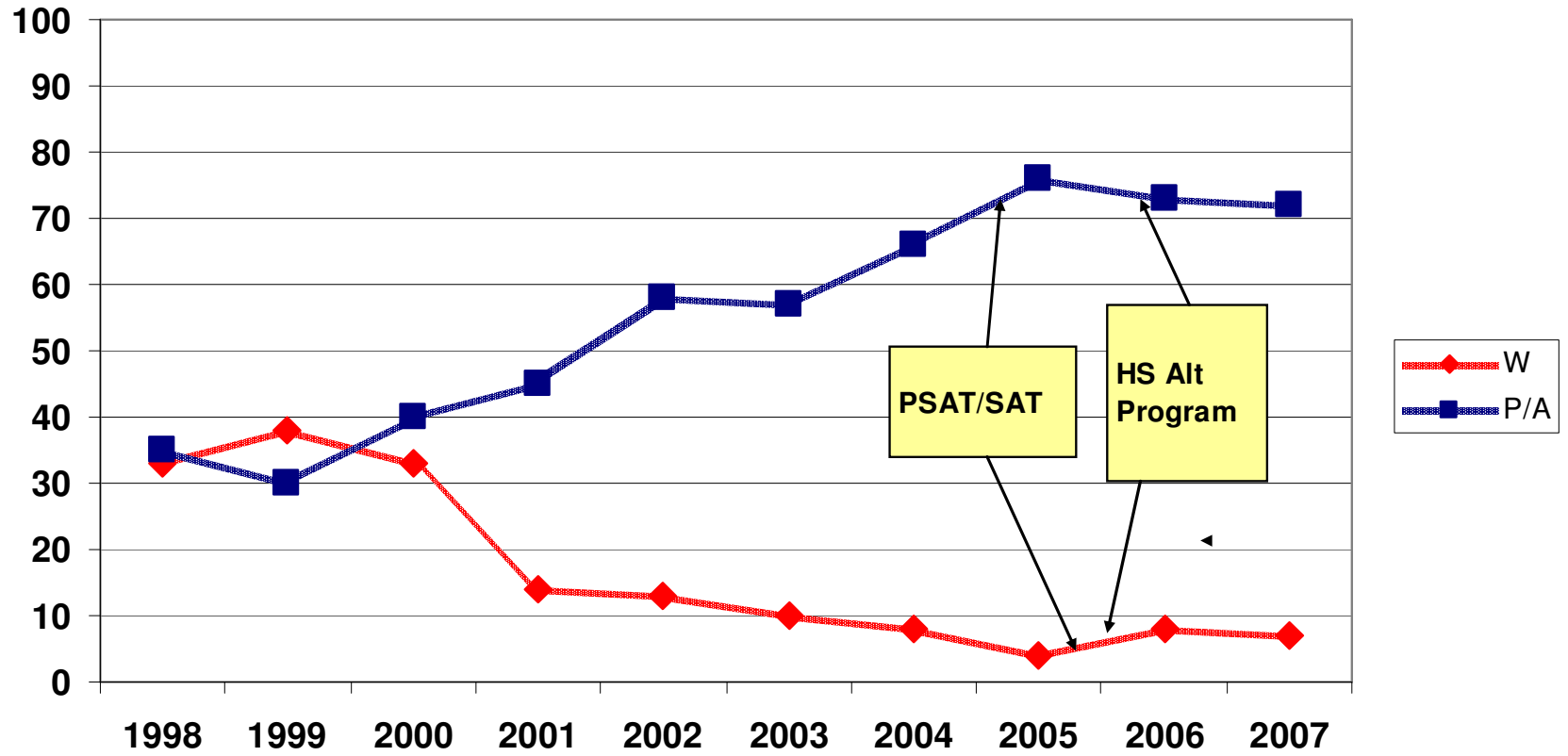
Middle School

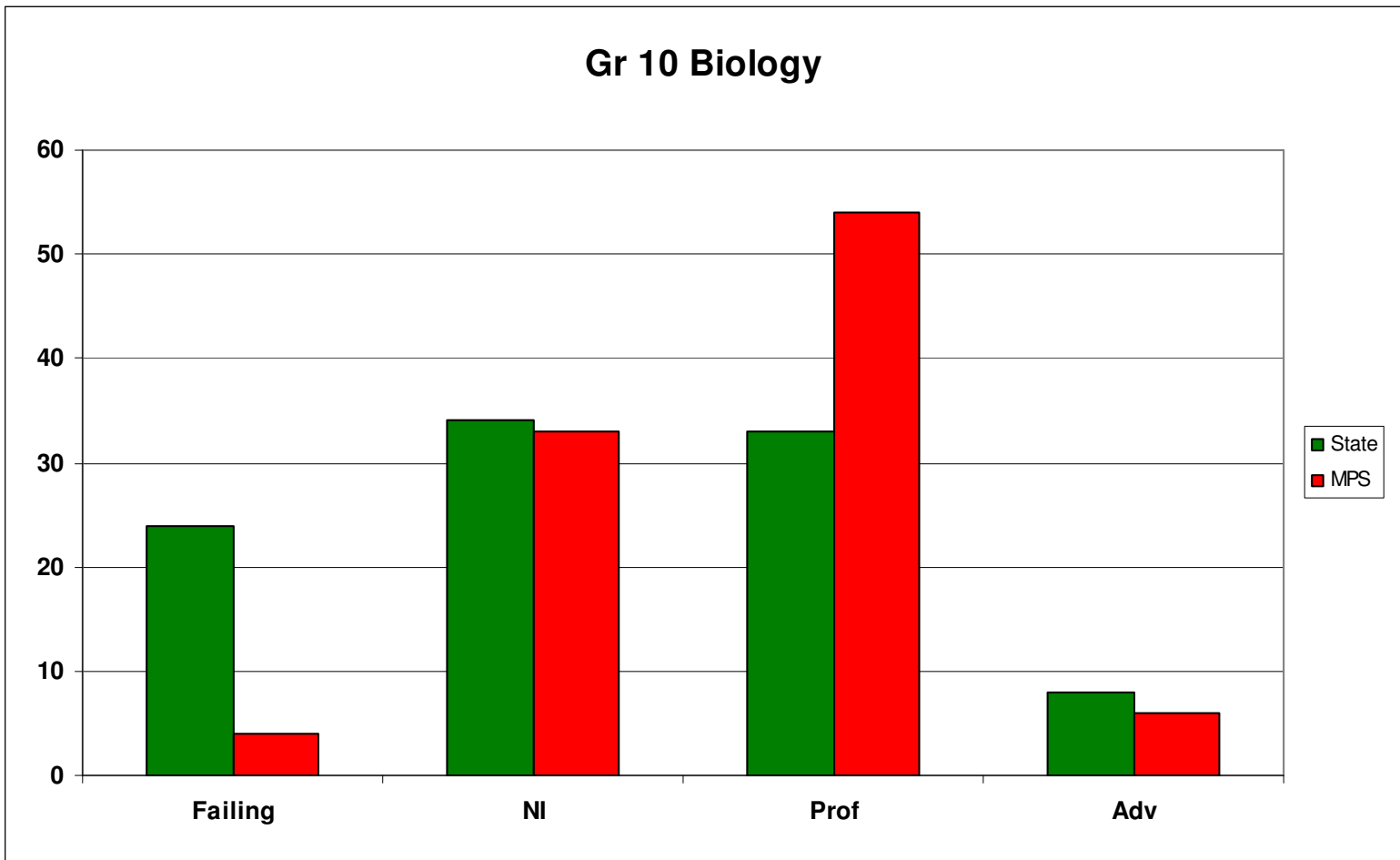
- **There are significant increases in MCAS math scores in grades 6 and 8.**
- **These significant increases were not sufficient to make AYP, making the achievement needed to close the gap greater.**
- **The large increases evidence of structural change.**
- **The flat scores in E/LA reflect 3 subgroups not achieving AYP.**

Grade 10 E/LA



Gr 10 Math



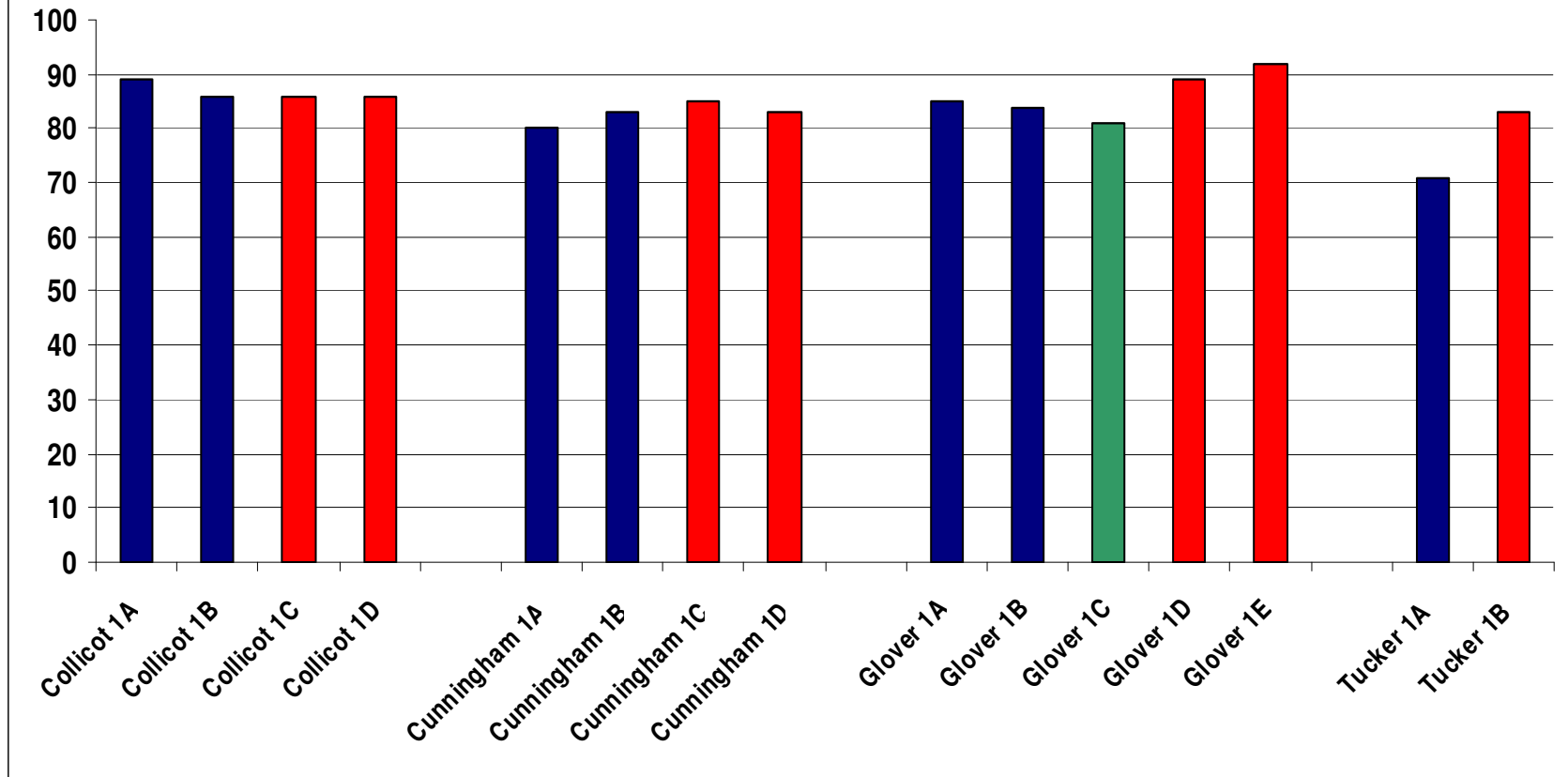


MPG SC Meeting 10-16-07

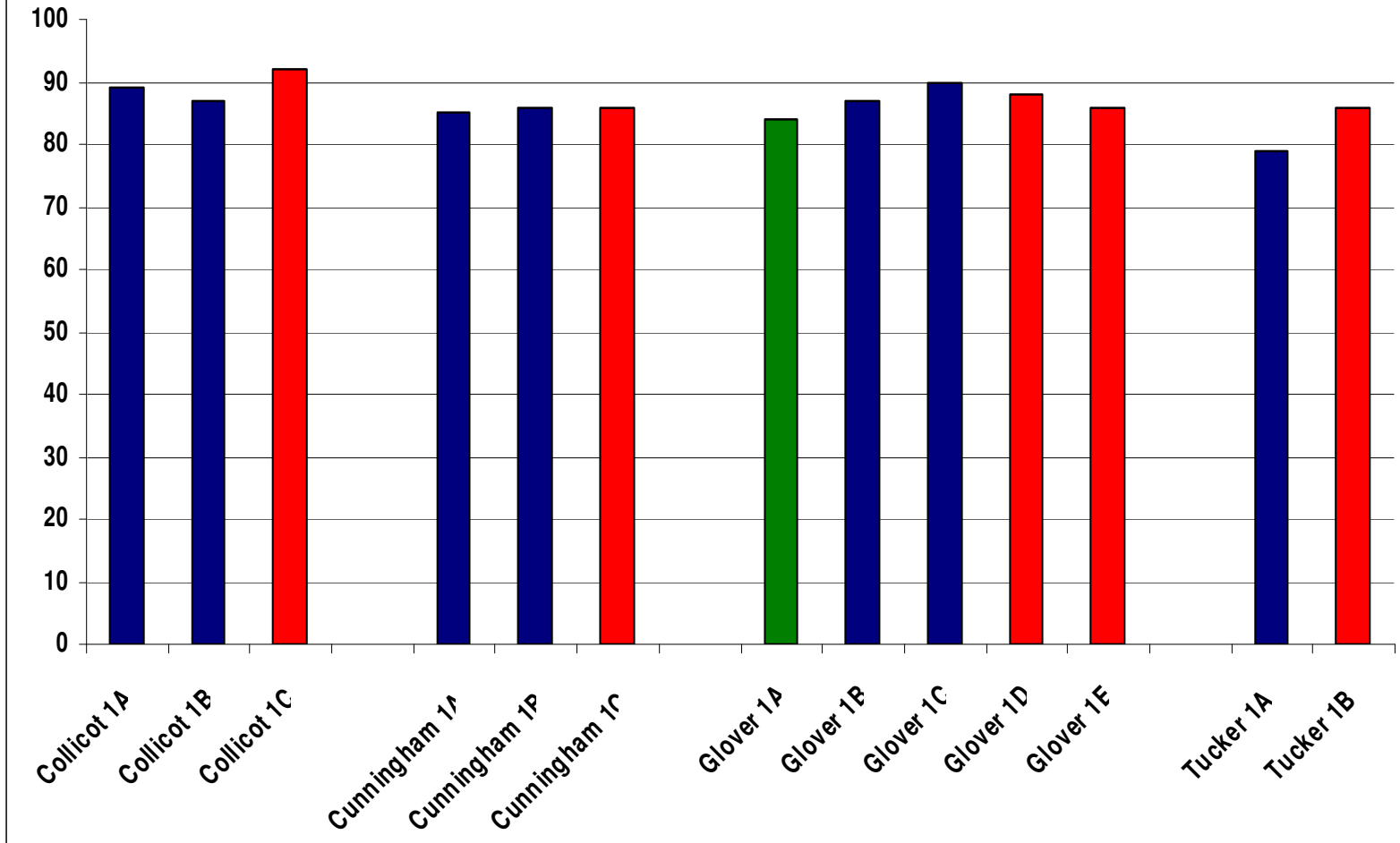
High School

- **Achievement gains are incremental in both E/LA and Math.**
- **Science (biology) achievement is noteworthy on the first administration.**
- **To date only 1 Milton High Student has failed to pass MCAS to receive a diploma.**

Grade 1 Math Benchmarks

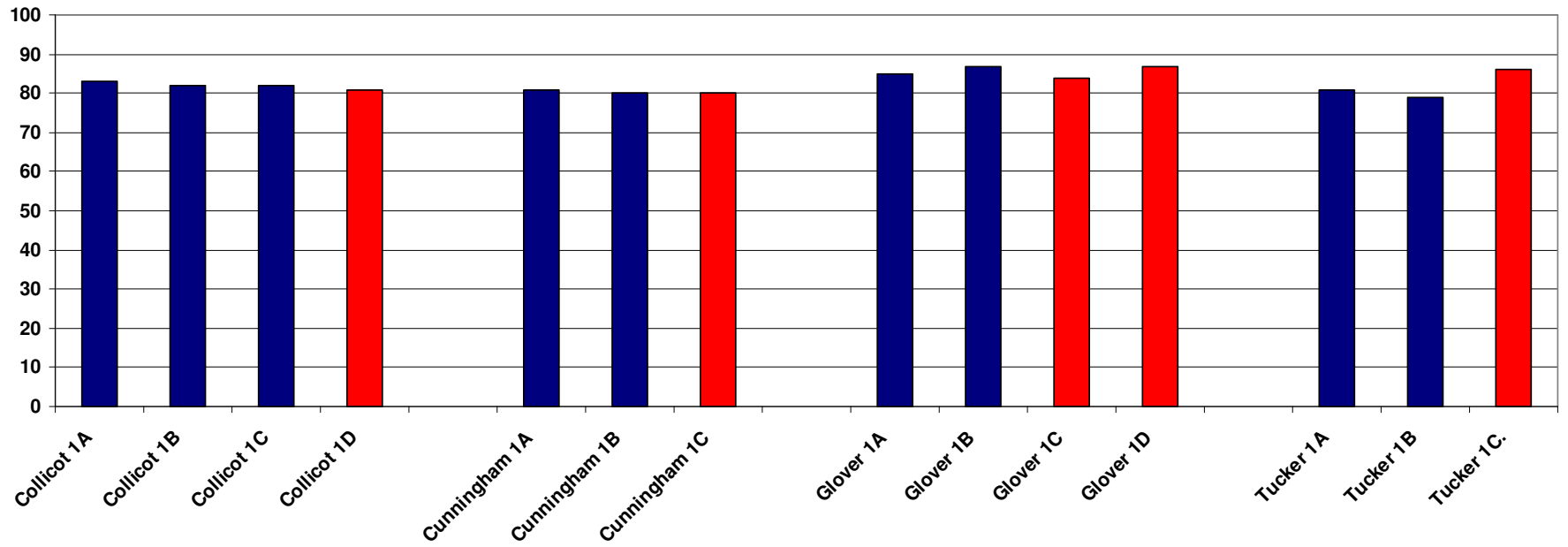


Grade 2 Math Benchmark

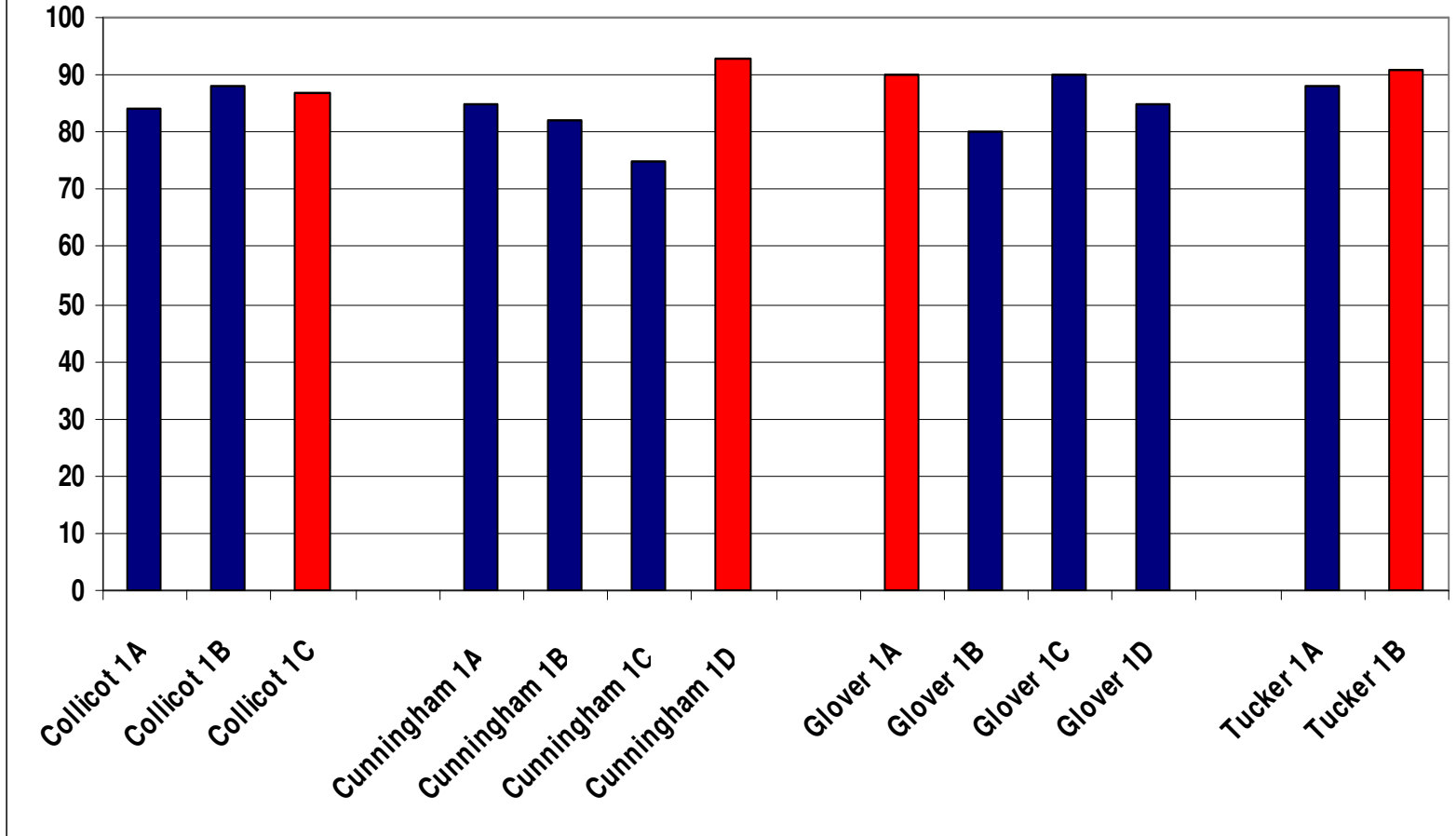


MPG SC Meeting 10-16-07

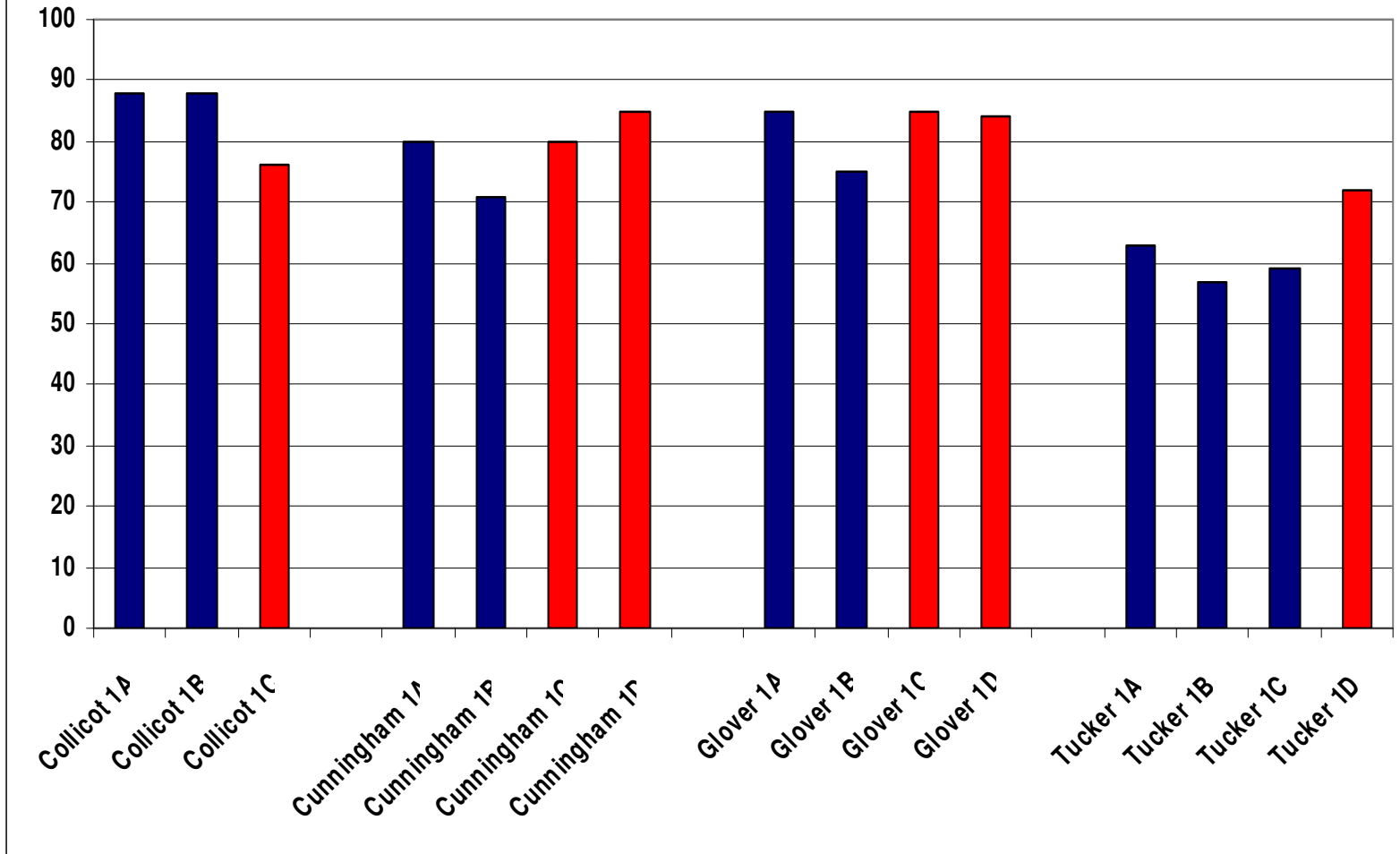
Gr 3 Math Benchmarks



Gr 4 Math Benchmarks



Gr 5 Math Benchmarks

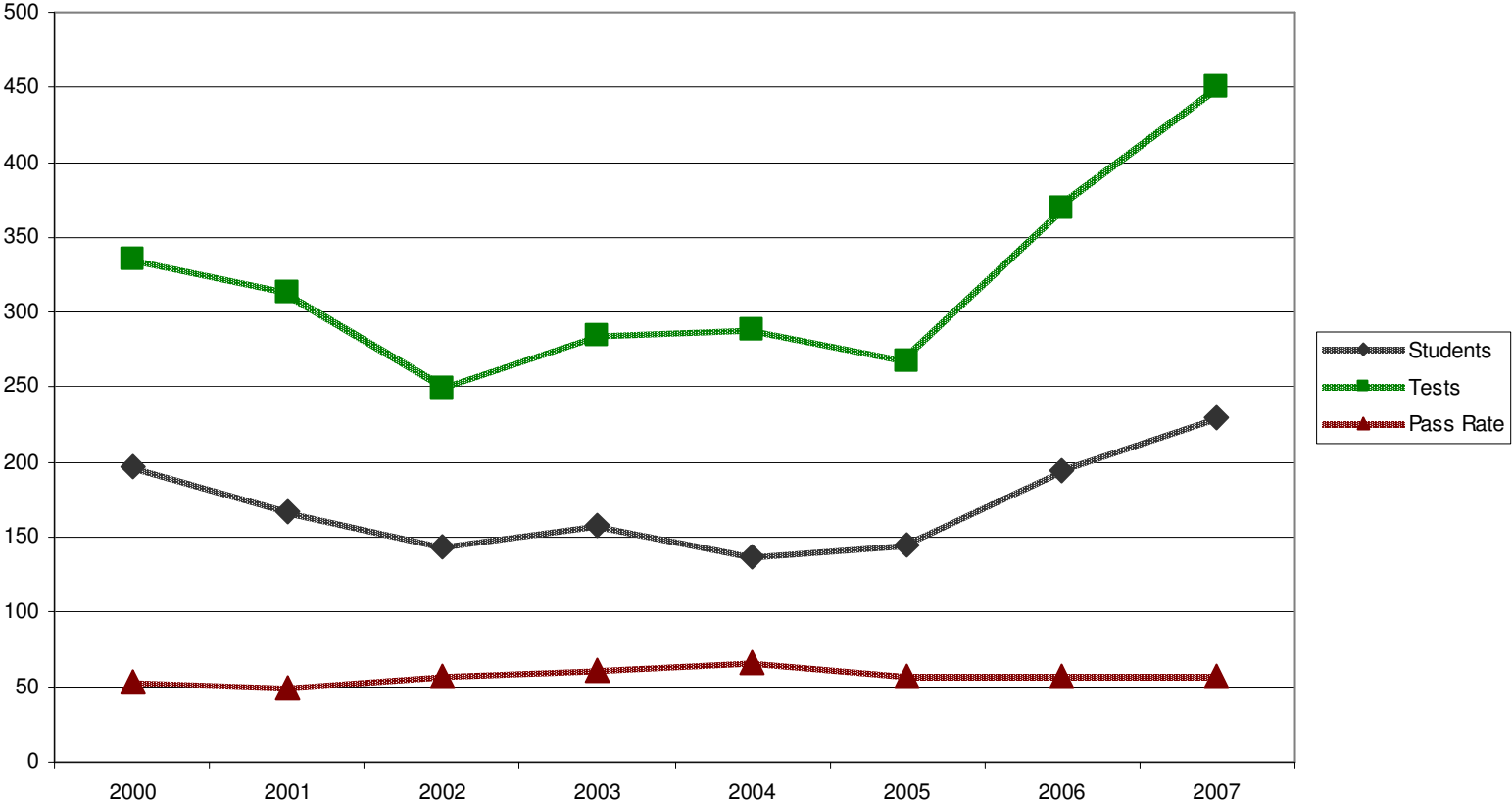


MPG SC Meeting 10-16-07

Elementary

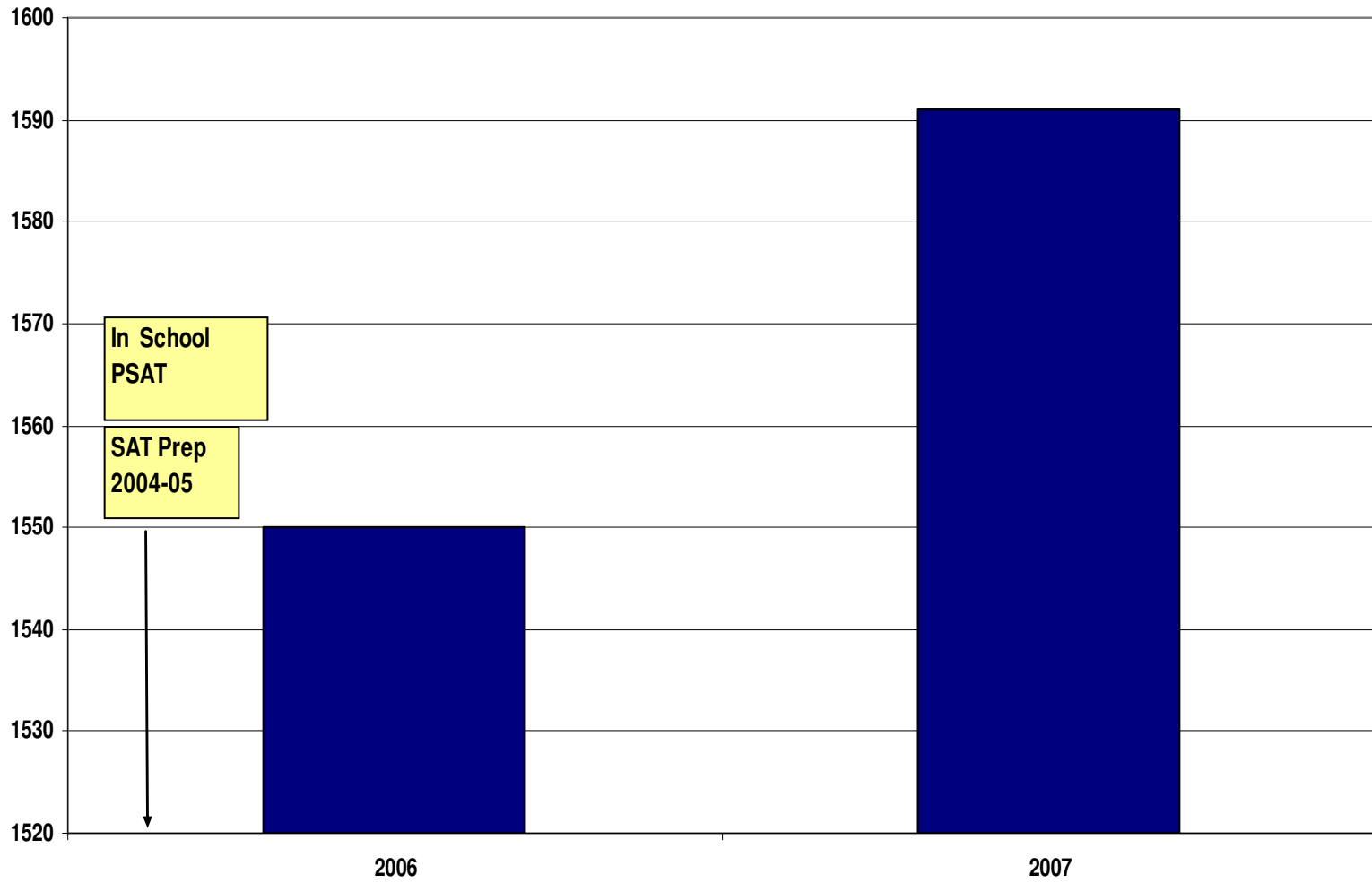
- **There is no significant difference in achievement among the 4 elementary schools as measured by the district benchmarks.**
- **There is no significant difference in achievement among the programs as measured by the district benchmarks.**

AP Tests

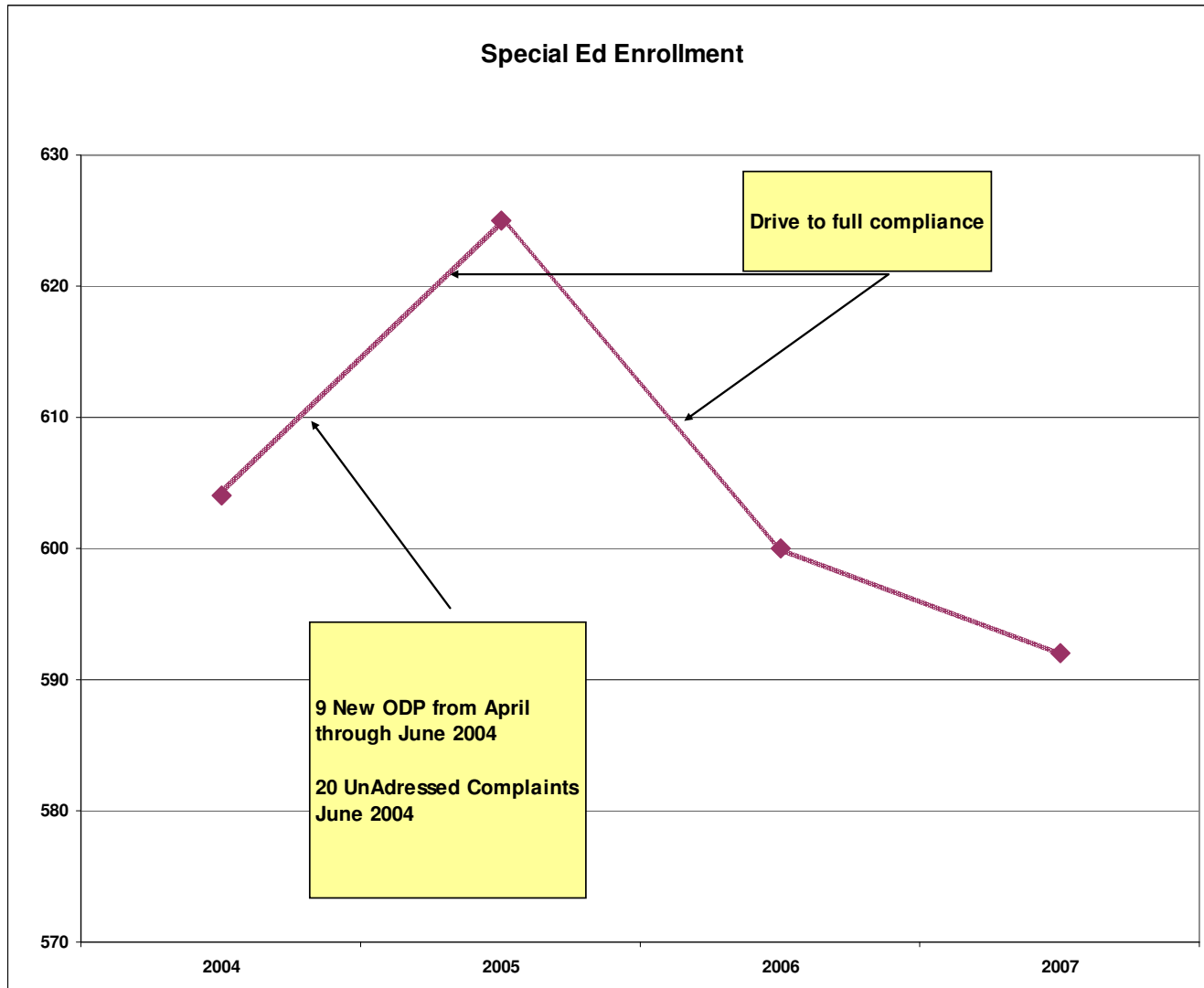


MPG SC Meeting 10-16-07

SAT Combined Score Comparison



MPG SC Meeting 10-16-07

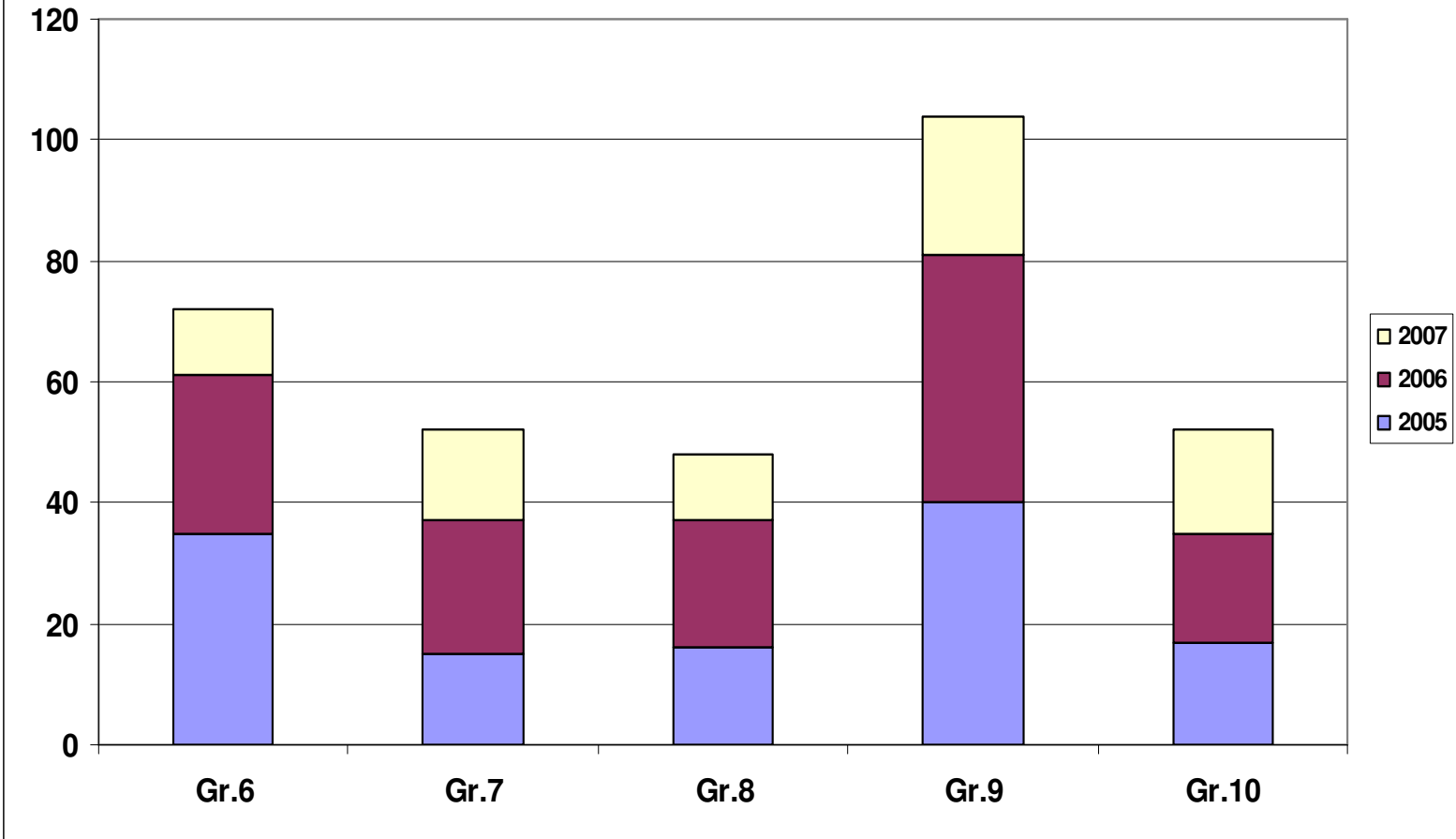


MPG SC Meeting 10-16-07

Enrollment

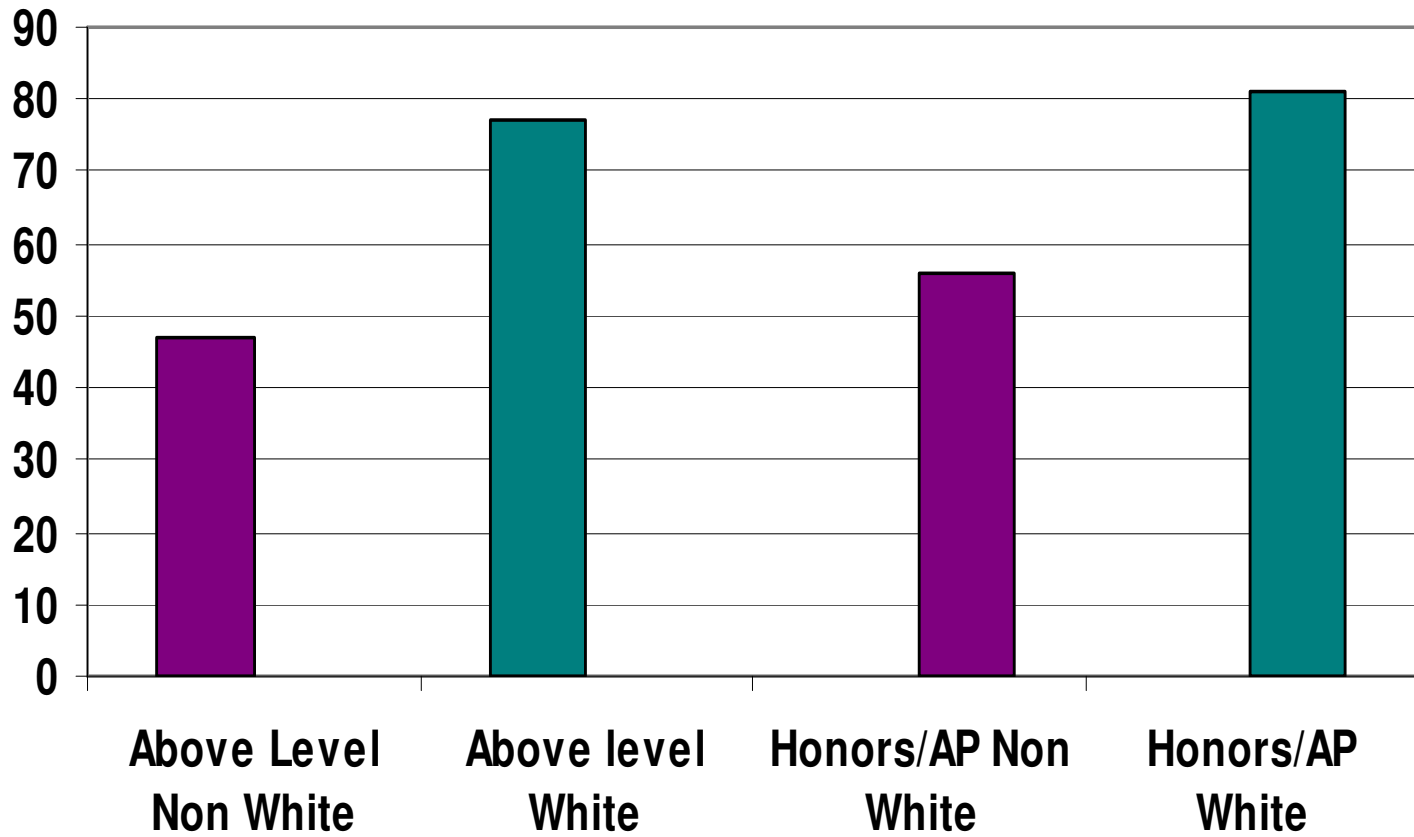
- **Over the past 4 years the overall enrollment has increased by approximately 5%.**
- **During the same time period the Special Education enrollment has decreased by 1%.**

New Students Grades 6-10



MPG SC Meeting 10-16-07

Comparison of Levels Grades 6-12



Middle School Math Levels

	Math 8-1	Math 8-2	Math 7-1	Math 7-2	Math 6-1	Math 6-2
White	76%	45%	81%	45%	79%	57%
Non White	24%	55%	19%	55%	21%	43%

0

**# of dropouts from MHS
last school year**

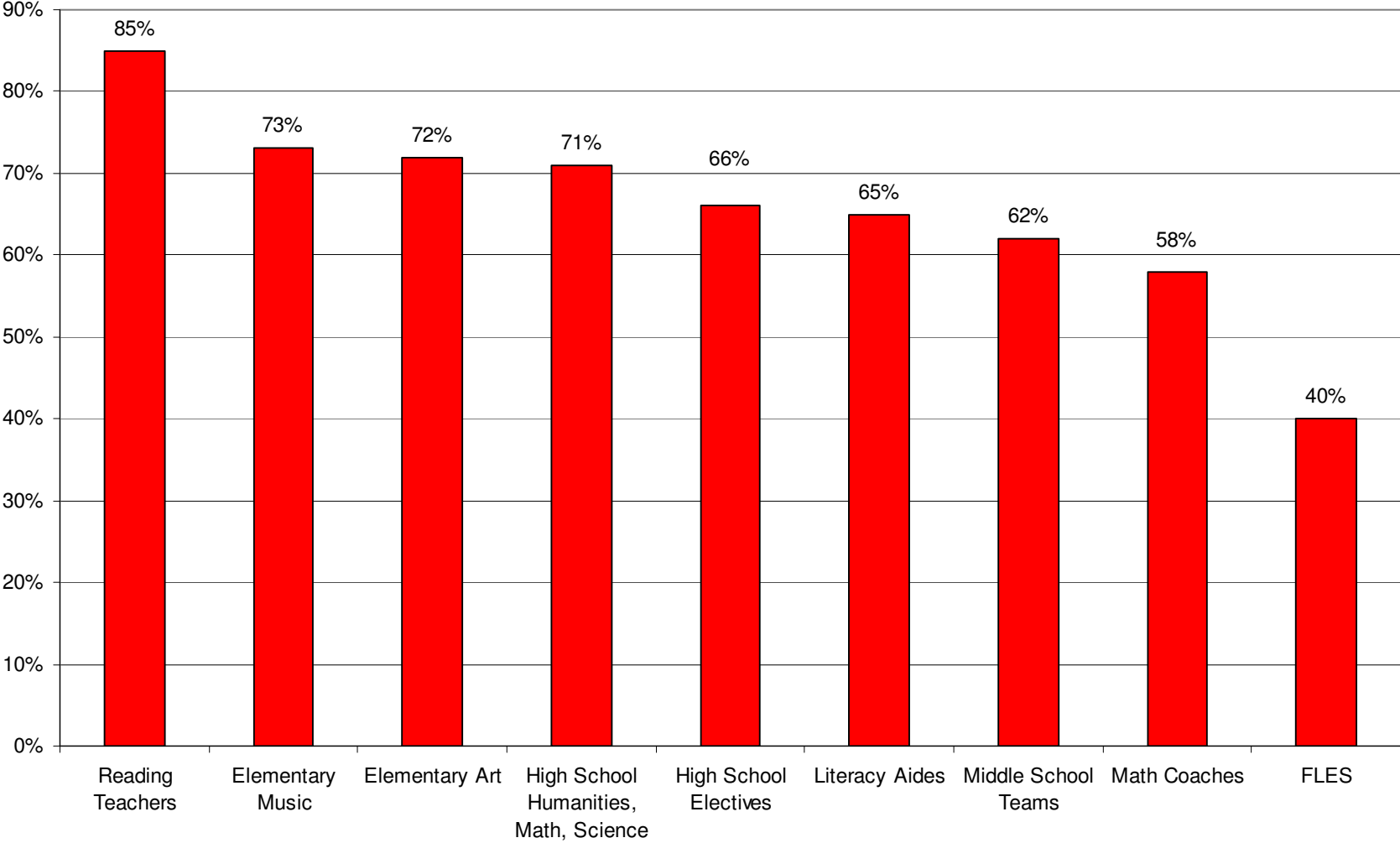
MPG SC Meeting 10-16-07

1

**# of new referrals to Special Ed
last year Tucker**

MPG SC Meeting 10-16-07

Staff Survey Q16 - Reductions that will negatively impact student achievement



MPG SC Meeting 10-16-07

Elementary

- **Reading Teachers**
- **Elementary Art**
- **Elementary Music**
- **Literacy Aides**
- **High School Core**

Middle School

- **Middle School Teams**
- **Reading Teachers**
- **High School Core**
- **Elementary Music**
- **Literacy Aides**

High School

- **High School Core**
- **High School Electives**
- **Reading Teachers**
- **Elementary Music**
- **Elementary Art**

So What?

MPG SC Meeting 10-16-07

Conclusions

- **MPS students continue to perform above the state average.**
- **Students have made gains at every level.**
- **The gap between the current achievement and the target achievement at the MS requires school wide change.**
- **More students are attempting more challenging courses at the High School.**
- **There is still room for improvement.**

The only way to raise student achievement is through SYSTEMIC CHANGE.

All the district's resources must be directed toward that goal; all the district's decisions must be made in the best interest of ALL of our students.