

Elementary Space Needs Study

PRELIMINARY

Milton Public Schools

School Committee Meeting

January 2, 2019

DRA

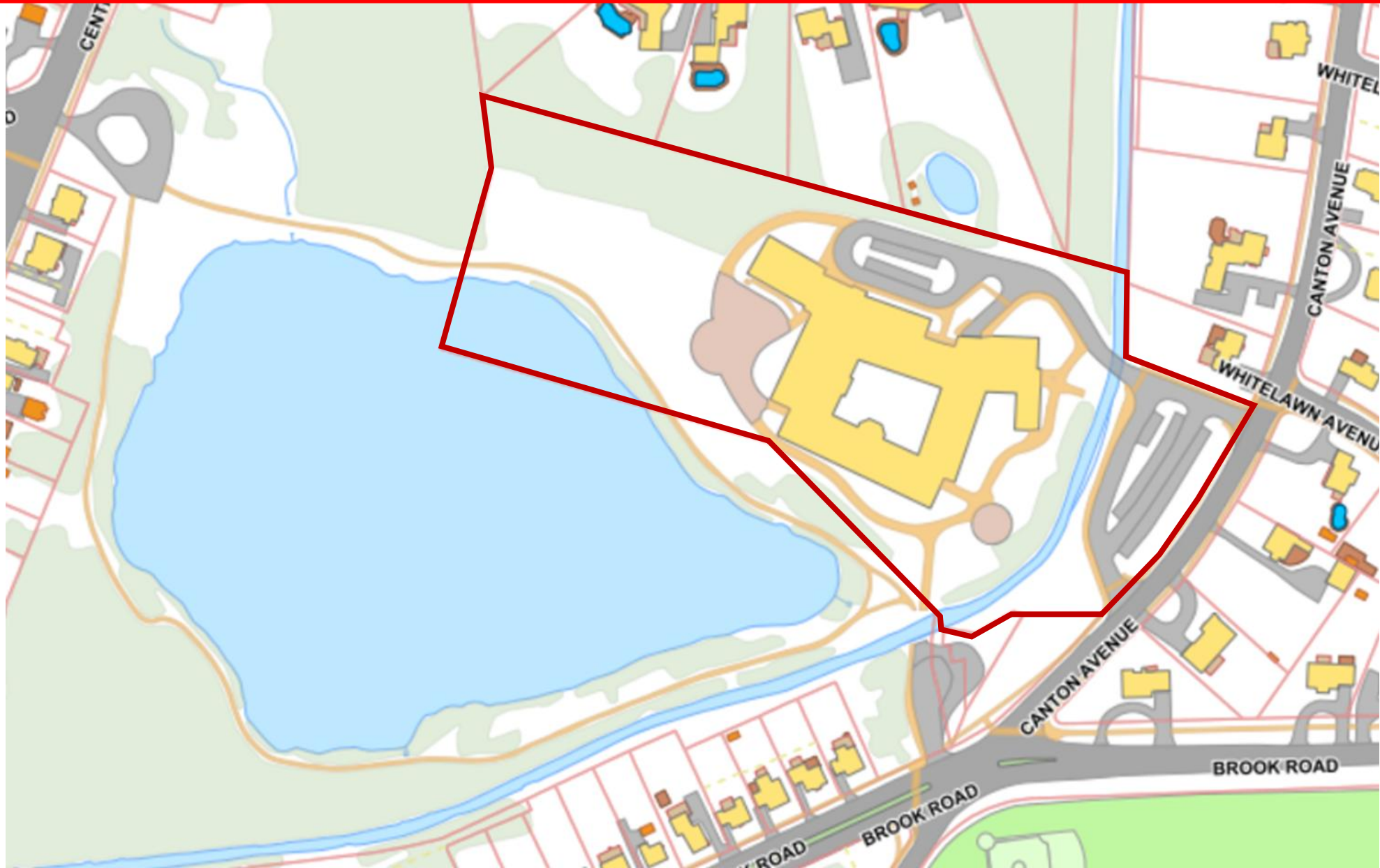
Goals

- Review current usage of space at the elementary schools
- Determine projected space needs- current (short-term) & long-term
- Develop options to address short and long- term needs
- Evaluate options

Glover Elementary School



Glover Elementary School





GLOVER

GRADES K-5

CLASSROOM COUNT

Grade	PK	K	1	2	3	4	5
Total		5	5	4	4	4	5

ENROLLMENT

Year	PK	K	1	2	3	4	5
2018	0	94	98	100	93	95	92

AVERAGE PER CLASSROOM

Year	PK	K	1	2	3	4	5
2018		18.8	19.6	25	23.3	23.8	18.4

Glover Elementary School



Current usage

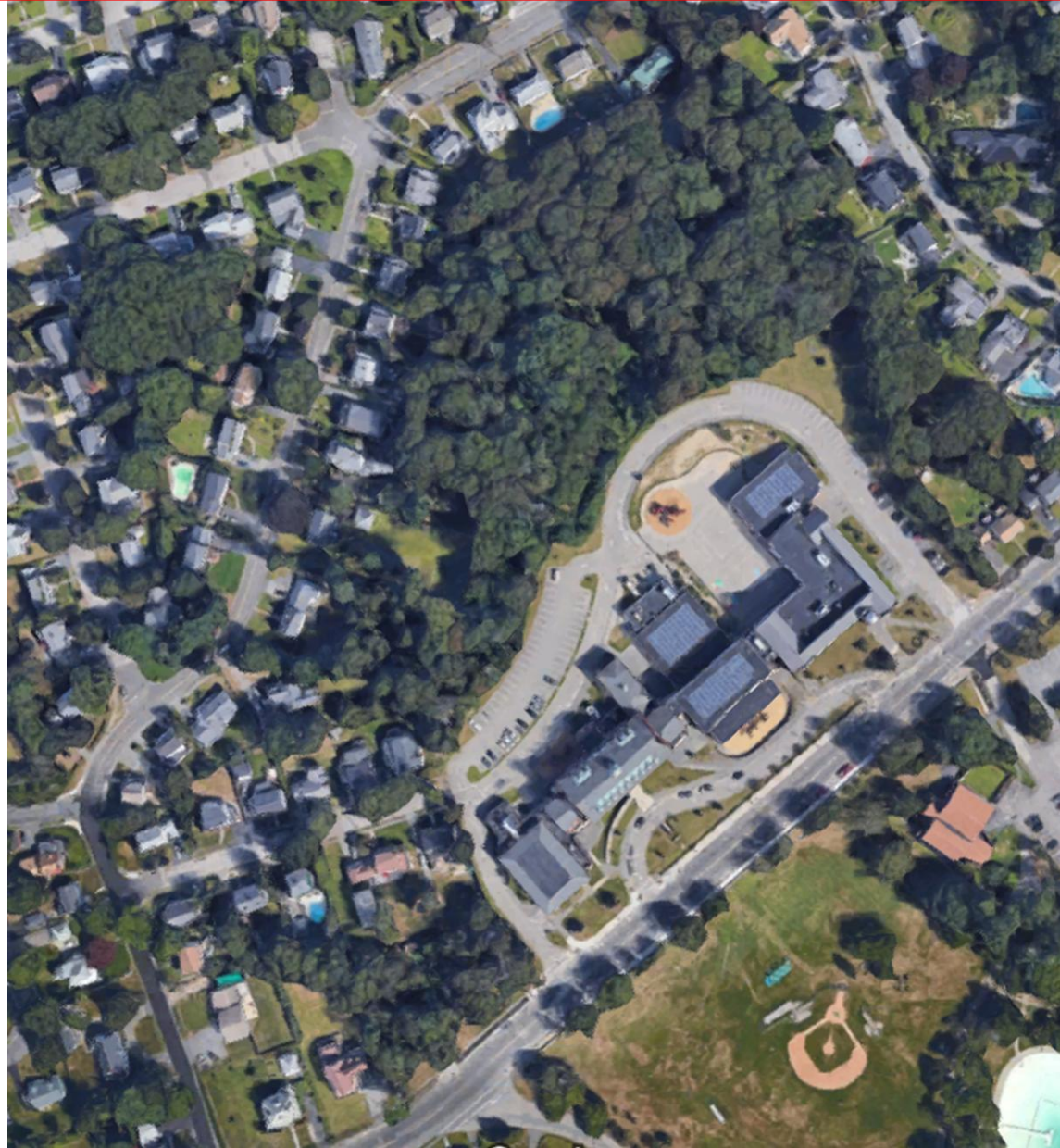
Enrollment (K-5): 601

Pre-K Classrooms	0
K Classrooms	5
Classrooms (Gr. 1 – 5)	22
Art, Music	2
Computer	0
Special Ed	0 (6 x .5)

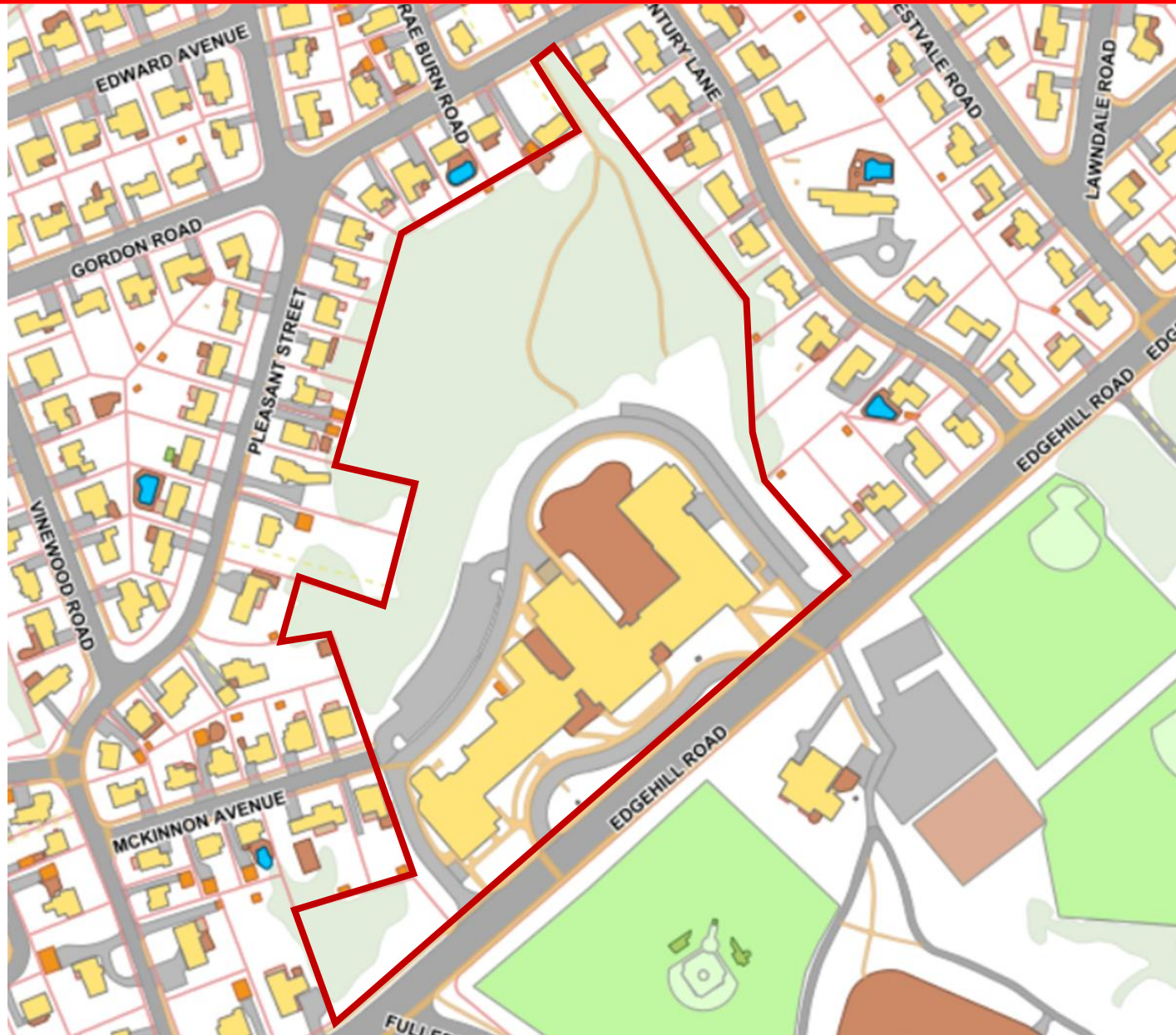
Average Class Sizes:

Kindergarten:	21
Gr. 1 – 5:	22

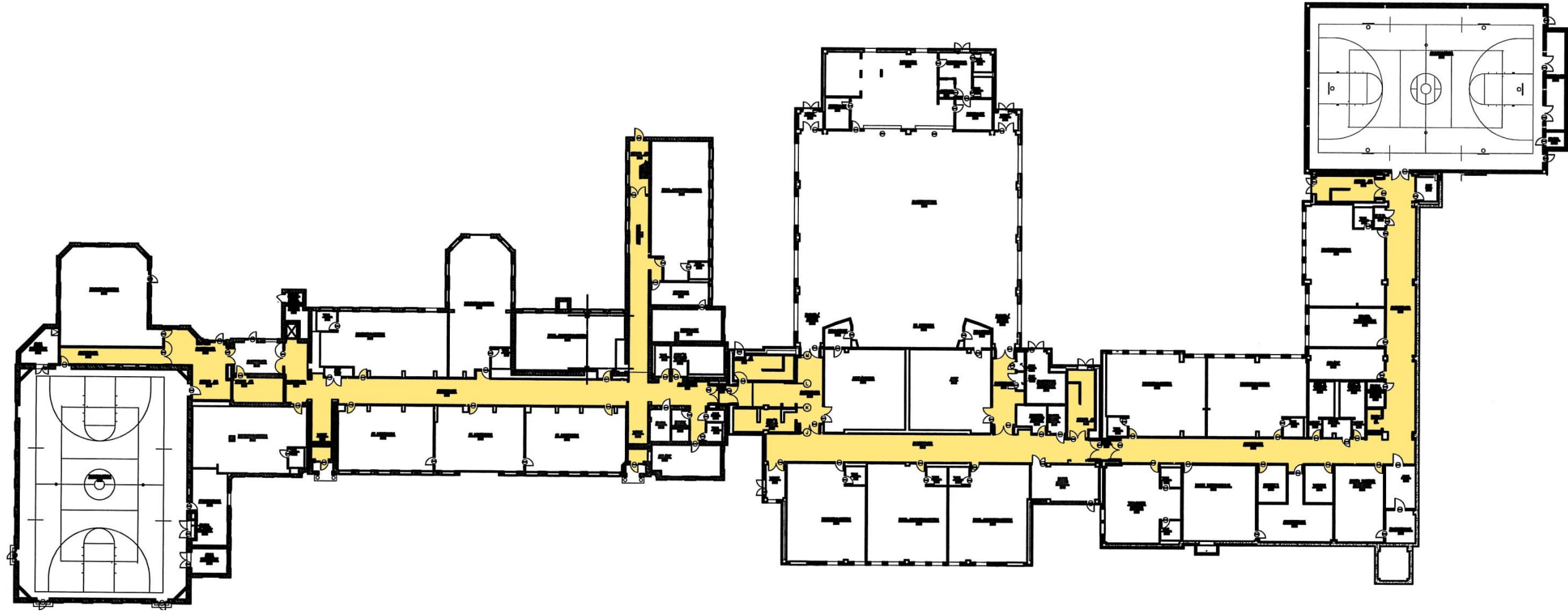
Collicot Cunningham Elementary Schools

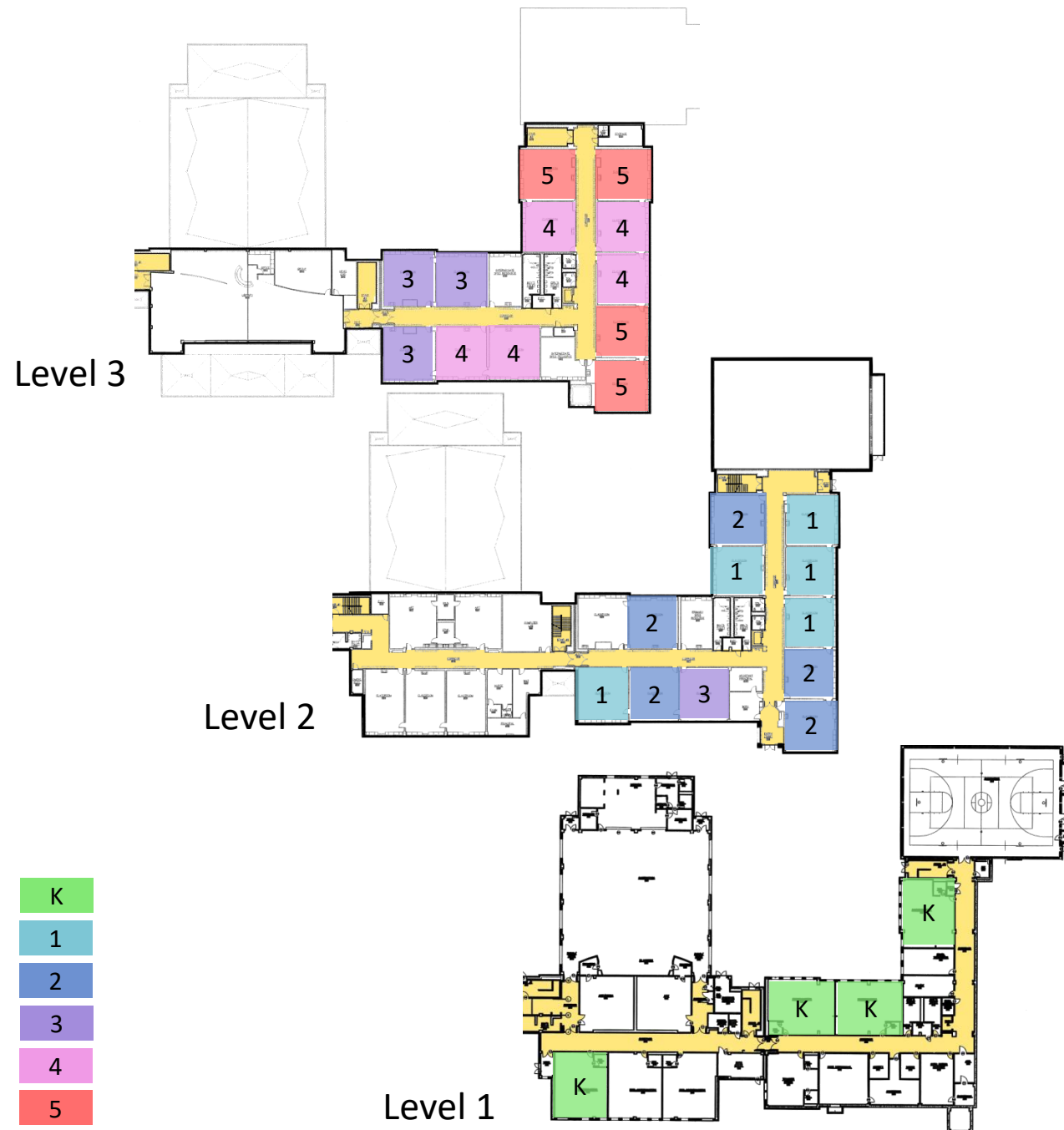


Collicot Cunningham Elementary Schools



Collicot Cunningham Elementary Schools





COLLICOT

GRADES K-5

CLASSROOM COUNT							
Grade	PK	K	1	2	3	4	5
Level 3					3	5	4
Level 2			5	5	1		
Level 1		4					
Total	0	4	5	5	4	5	4
ENROLLMENT							
Year	PK	K	1	2	3	4	5
2018	0	102	107	109	102	104	100
AVERAGE PER CLASSROOM							
Year	PK	K	1	2	3	4	5
2018		25.5	21.4	21.8	25.5	20.8	25

Collicot Elementary School

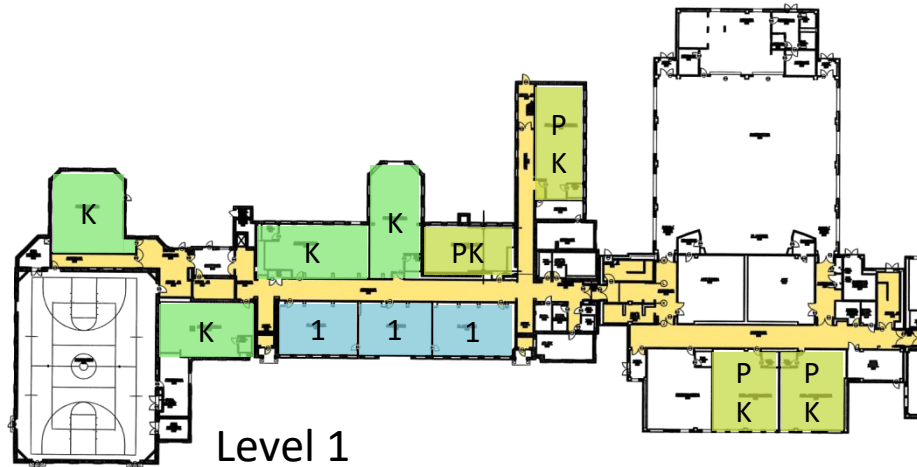
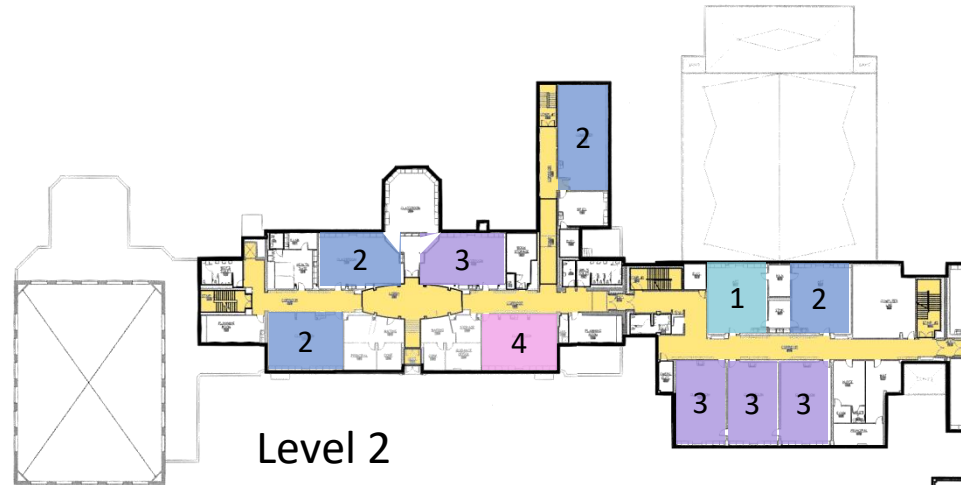
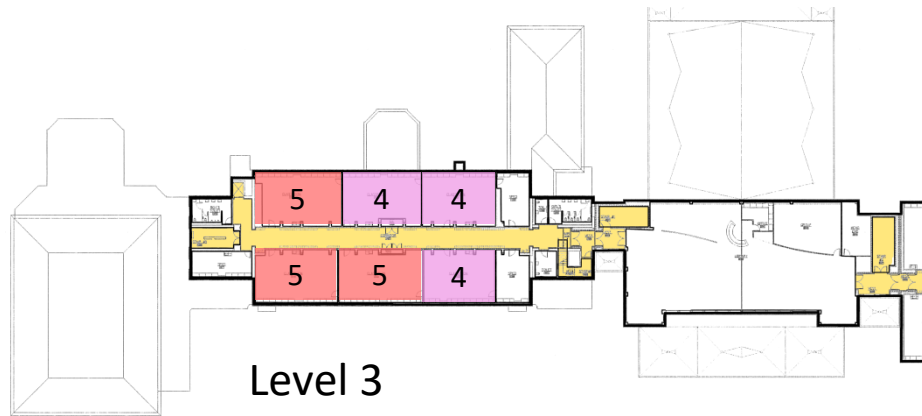


Current usage

Enrollment (K-5): 661

Pre-K Classrooms	0
K Classrooms	4
Classrooms (Gr. 1 – 5)	23
Art, Music	2
Computer	0
Special Ed	0 (6 x .5)

Average Class Sizes:	
Kindergarten:	23
Gr. 1 – 5:	24



CUNNINGHAM

GRADES PK-5

CLASSROOM COUNT

Grade	<u>PK</u>	<u>K</u>	<u>1</u>	<u>2</u>	<u>3</u>	<u>4</u>	<u>5</u>
Level 3						3	3
Level 2			1	4	4	1	
Level 1	4	4	3				
Total	4	4	4	4	4	4	3

ENROLLMENT

Year	<u>PK</u>	<u>K</u>	<u>1</u>	<u>2</u>	<u>3</u>	<u>4</u>	<u>5</u>
2018	80	93	98	100	93	95	70

AVERAGE PER CLASSROOM

Year	<u>PK</u>	<u>K</u>	<u>1</u>	<u>2</u>	<u>3</u>	<u>4</u>	<u>5</u>
2018	10	23.3	24.5	25	23.3	23.8	23.3
1/2 day							

Cunningham Elementary School



Current usage

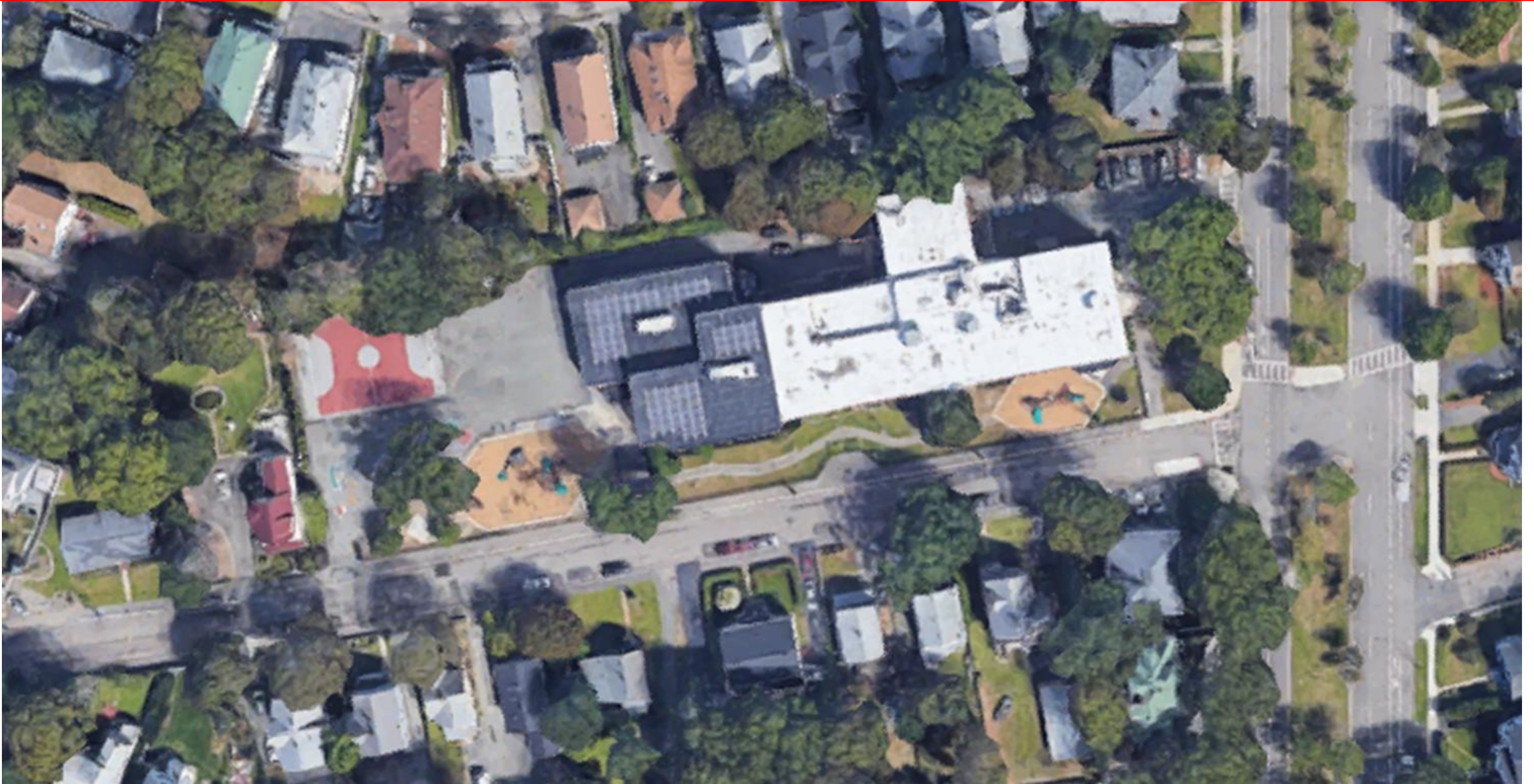
Enrollment (PreK-5): 595

Pre-K Classrooms	4
K Classrooms	4
Classrooms (Gr. 1 – 5)	19
Art, Music	1
Computer	0
Special Ed	0 (5 x .5)

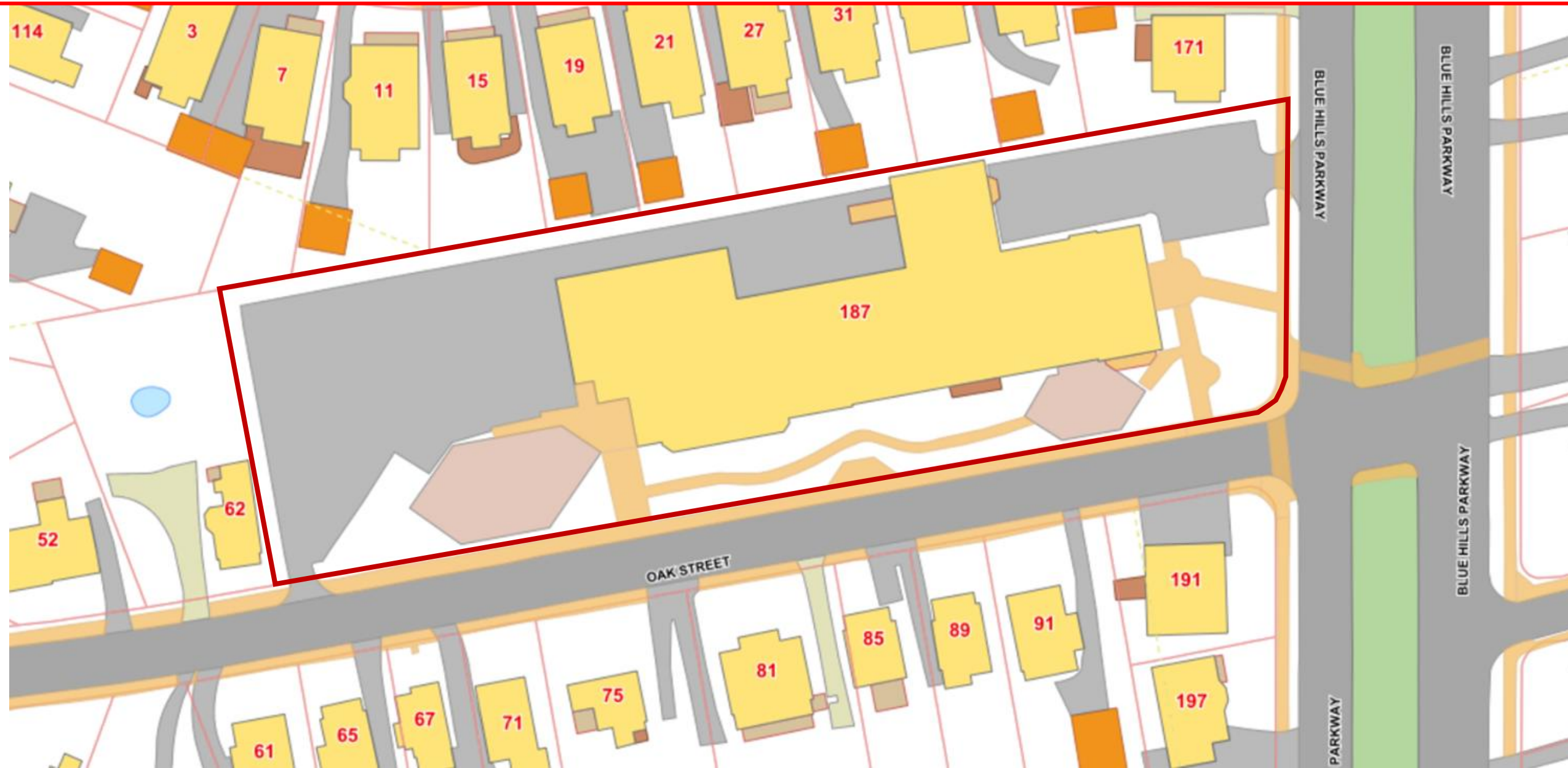
Average Class Sizes:

Kindergarten:	23
Gr. 1 – 5:	22

Tucker Elementary School



Tucker Elementary School



Tucker Elementary School



Current usage

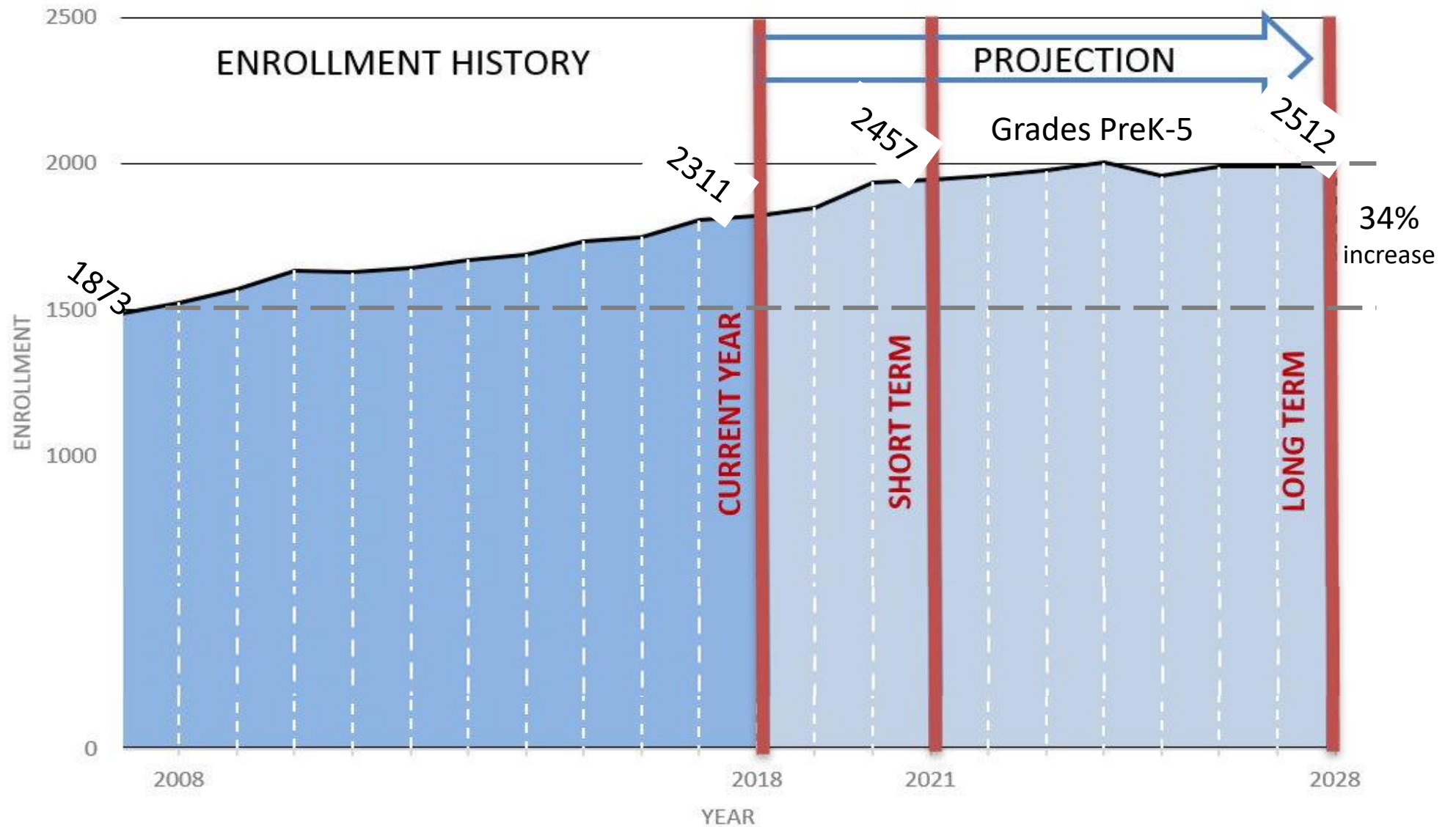
Enrollment (PreK-5): 437

Pre-K Classrooms	1.5
K Classrooms	3
Classrooms (Gr. 1 – 5)	15
Art, Music	1
Computer	1
Special Ed	0 (4 x .5)

Average Class Sizes:

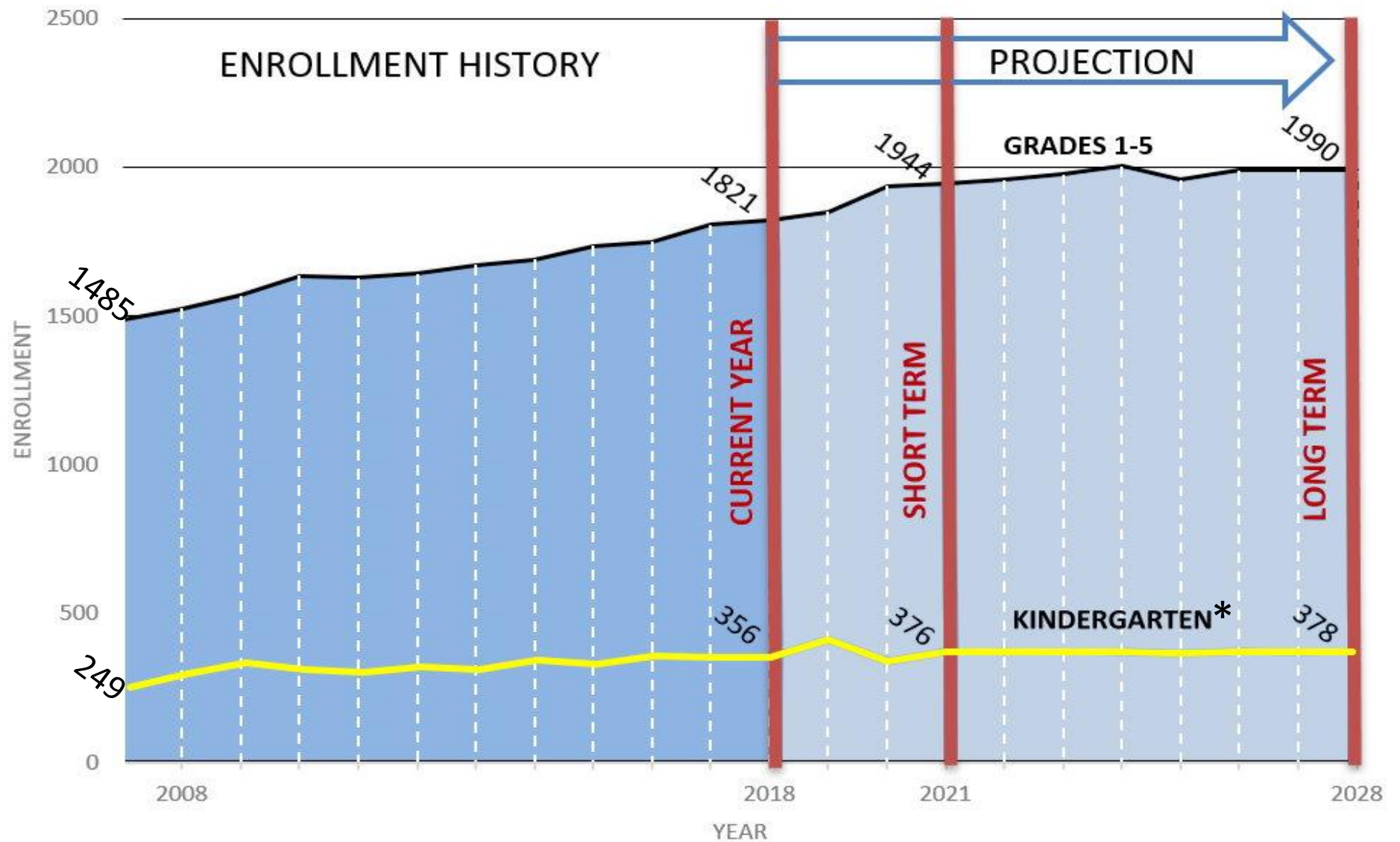
Kindergarten:	21
Gr. 1 – 5:	22

Elementary Schools Enrollments



Source: New England School Development Council, 10.11.2018

Elementary Schools Enrollments



Source: New England School Development Council, 10.11.2018
*assumes level births; level "move-ins"

Elementary Schools Totals

Current



Current usage

Pre-K Classrooms	5.5
K Classrooms	16
Classrooms (Gr. 1 – 5)	79
Art, Music	6
Computer	1
Special Ed	0 (21 x .5)

Full-size Classrooms:	107.5
-----------------------	-------

Average Class Sizes:	
Kindergarten:	22
Gr. 1 – 5:	23

Elementary Schools Totals

Short-term (3 years)



Current usage		Assumed Program	Shortfall
Pre-K Classrooms	5.5	5	(.5)
K Classrooms	16	20	4
Classrooms (Gr. 1 – 5)	79	92	13
Art, Music	6	8	2
Computer	1	0?	(1)
Special Ed	0 (21 x .5)	2?	2
Full-size Classrooms:		127	19.5 (18%)

Average Class Sizes:	current	if no change
Kindergarten:	22	23
Gr. 1 – 5:	23	24

Elementary Schools Totals

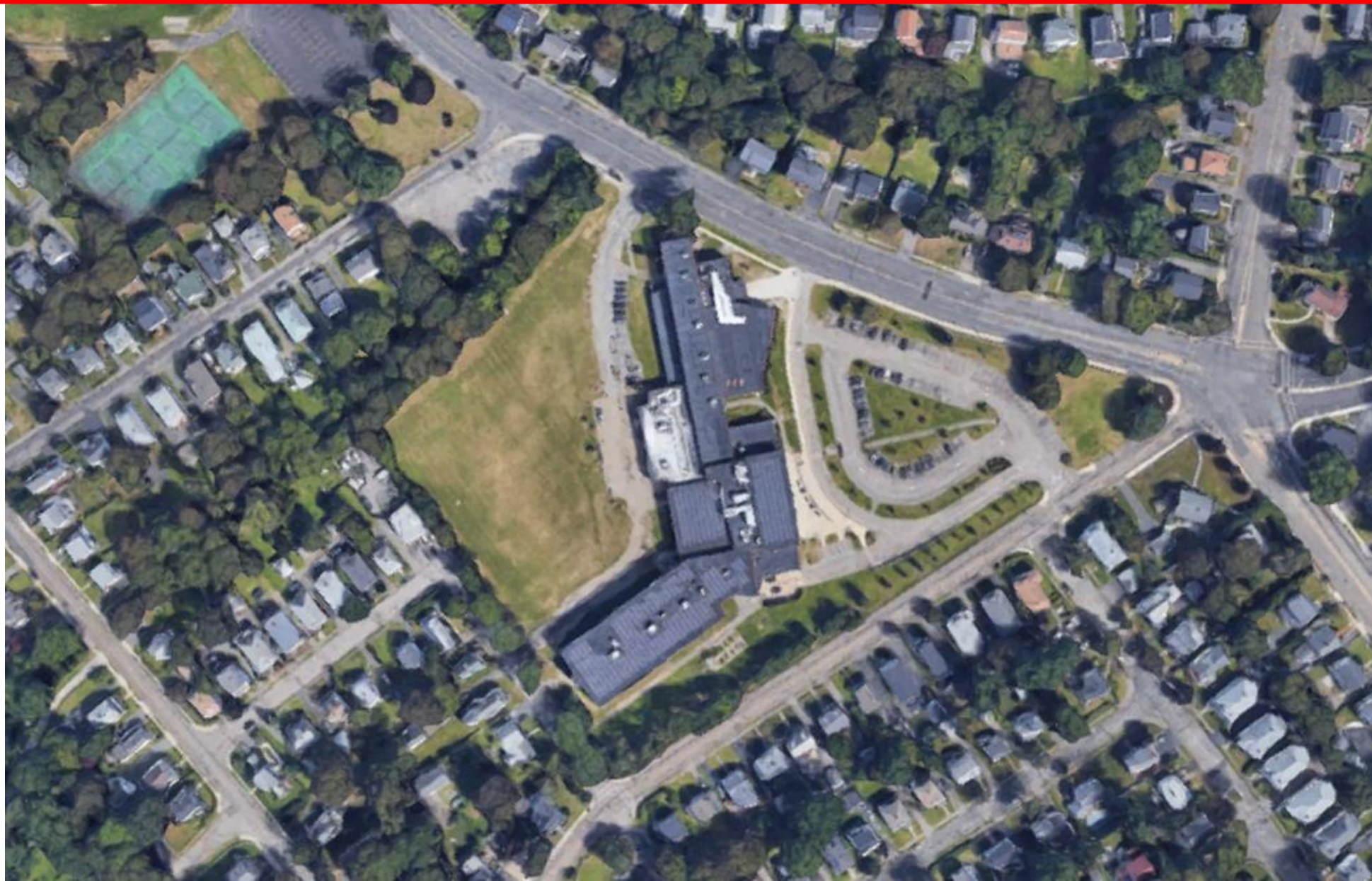
Long-term (10 years)



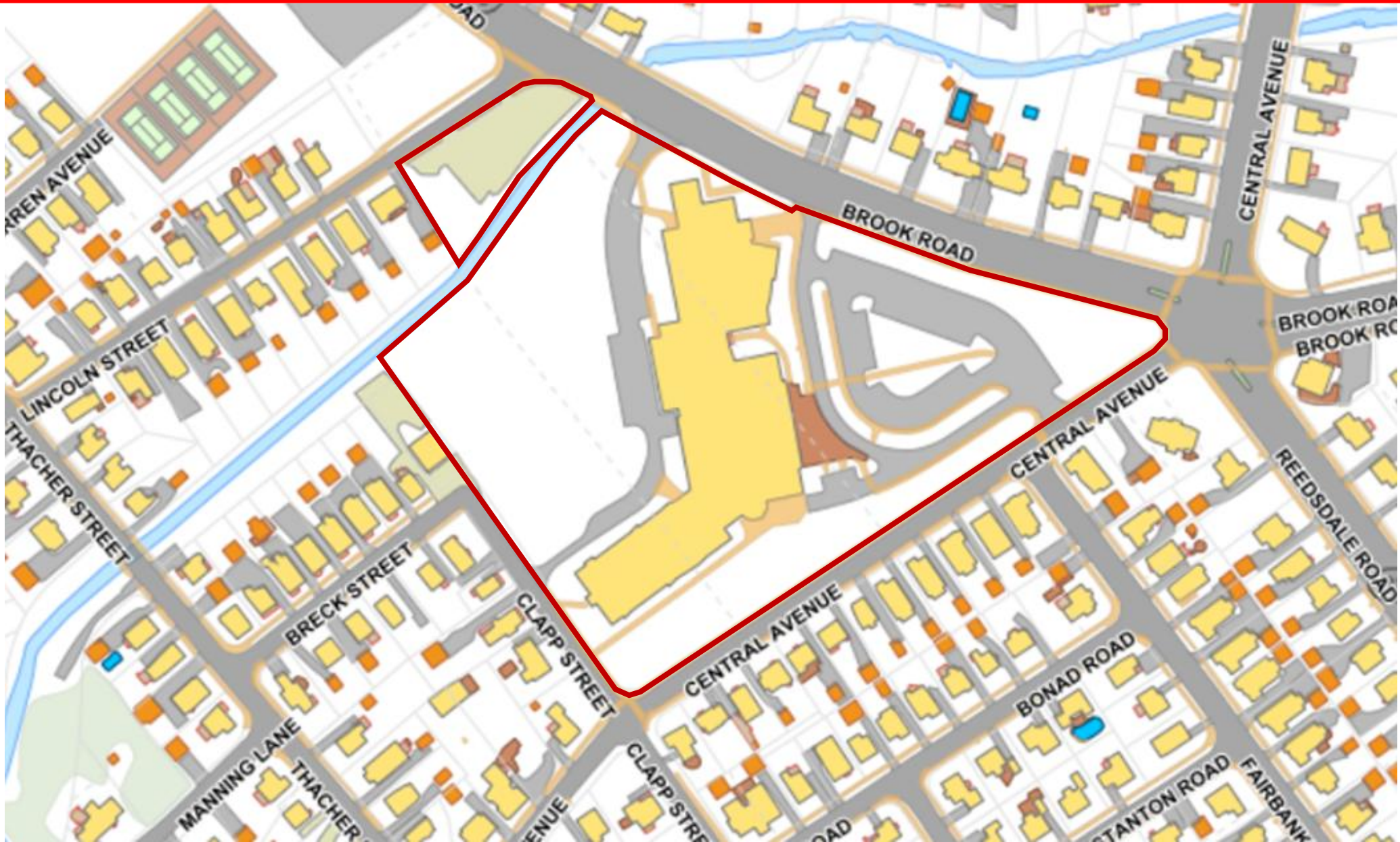
Current usage		Assumed Program	Shortfall
Pre-K Classrooms	5.5	6	.5
K Classrooms	16	20	4
Classrooms (Gr. 1 – 5)	79	95	16
Art, Music	6	8	2
Computer	1	0	(1)
Special Ed	0 (21 x .5)	4	4
Full-size Classrooms:		133	25.5 (24%)

Average Class Sizes:	current	if no change
Kindergarten:	22	24
Gr. 1 – 5:	23	25

Pierce Middle School



Pierce Middle School



PIERCE MS

GRADES 6-8



Pierce Middle School

Current usage

Core Classrooms	45
-----------------	----

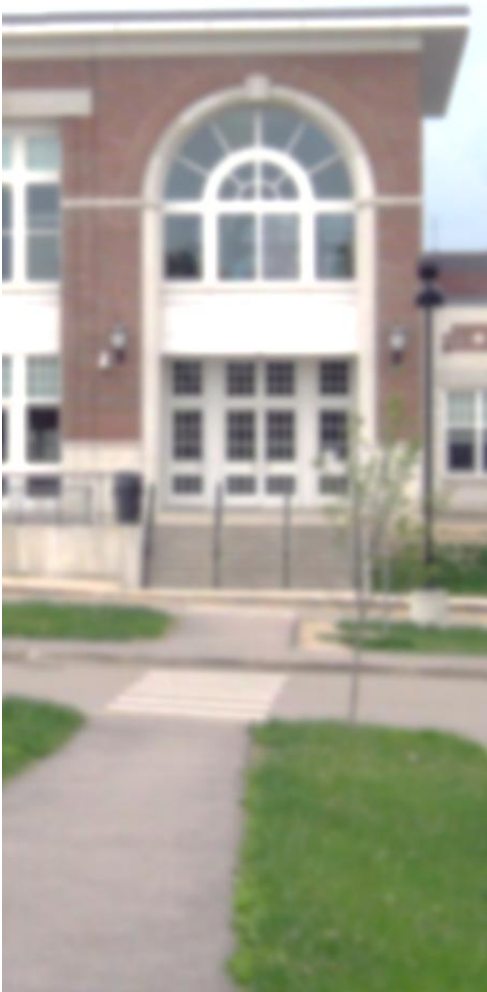
4-CR Teams (incl. Science), World Language

Art, Music, Drama, Health	7
---------------------------	---

Computer, STEM, Lang.Lab	4
--------------------------	---

Special Ed	8
------------	---

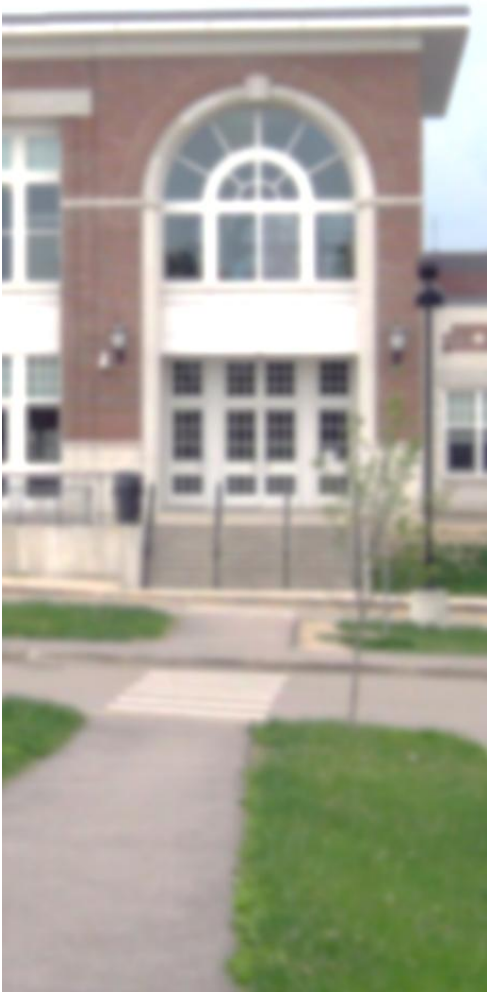
Full-size Classrooms:	64
-----------------------	----



Pierce Middle School

Current usage		Assumed Program*	Delta
Core Classrooms	45	43	2
4-CR Teams (incl. Science), World Language			
Art, Music, Drama, Health	7	7	-
Computer, STEM, Lang.Lab	4	4	-
Special Ed	8	8	-
<hr/>			
Full-size Classrooms:	64	62	2

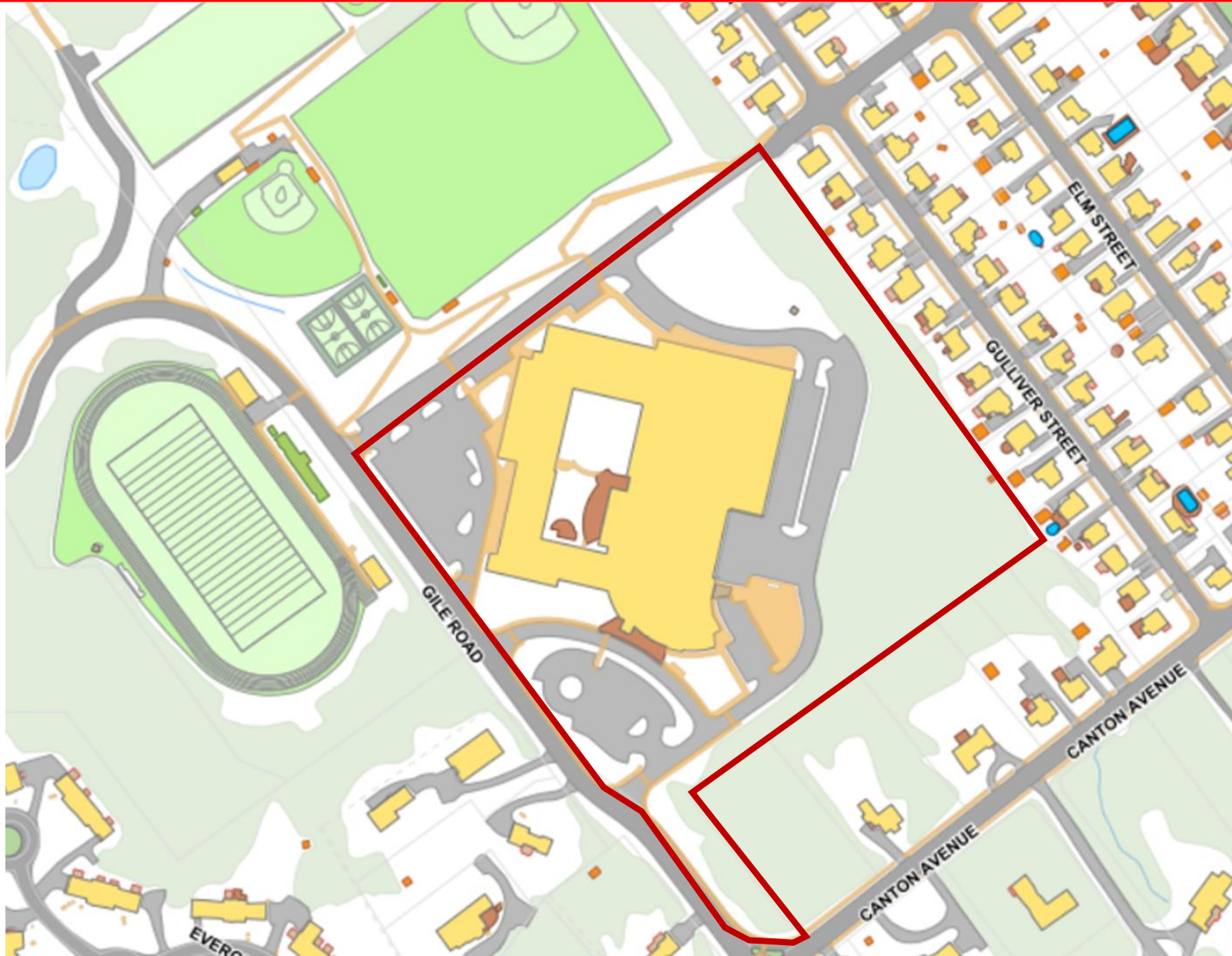
**Assumed program is for 961 students (SY '21-'22), in 9 teams (3 teams per Grade) plus 7 Language classrooms. Average class size: 22 students.*

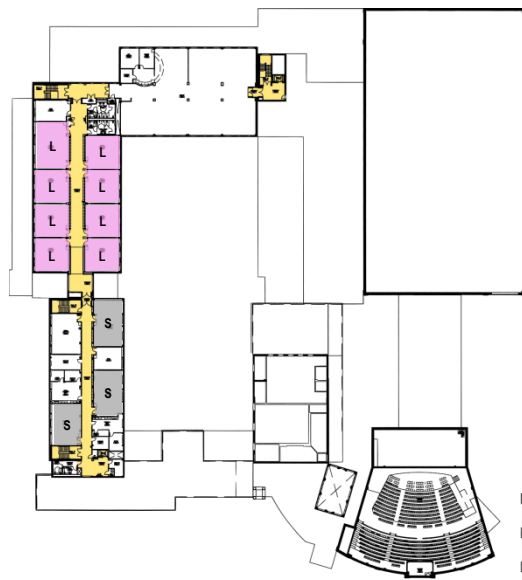


Milton High School

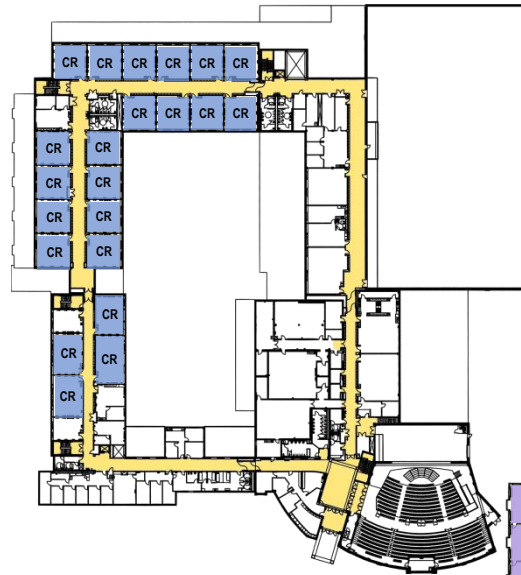


Milton High School





Level 3



Level 2



Level 1

PK	Pre-K Program
L	Language
SCI	Science
CR	Grade Classroom
S	Shared, multi-grades

MILTON HS

GRADES 9-12, PK

Milton High School



Current usage		Assumed Program*	Delta
Core Classrooms	54	50	4
incl: Science, World Language			
Art, Music, Drama	6	4	2
Technology & Vocational	9	6	3
Special Ed	5	8	(3)
<hr/>			
Full-size Classrooms:	74	68	6

** Assumed program as per MSBA guidelines for 1074 students (SY '21-'22), average class size = 22 students*

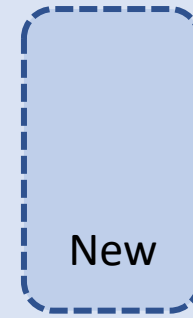
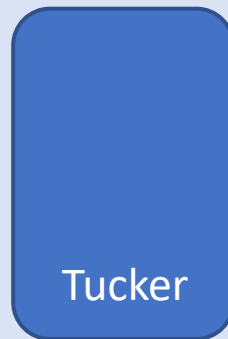
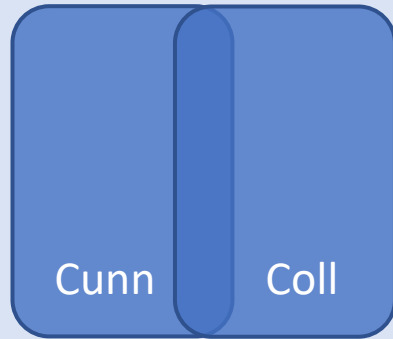
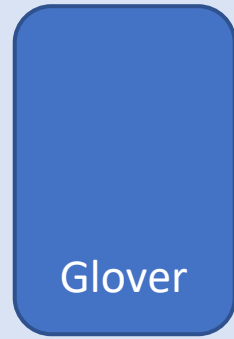
Options

Short-term

- Do nothing- allow average class size to increase
- Convert remaining Art, Music Rooms, Computer Rooms
- Create Classroom(s) within Library/ Media Centers
- Utilize existing underutilized spaces in High School, Middle School, Cunningham upper floor
- Rent modular classrooms
- Rent and renovate space, if available
- *Some combination of the above*

- Do Nothing – allow average class size to increase
- Convert remaining Art, Music Rooms, Computer Rooms, Libraries
- Construct new space
 - Addition to an existing elementary school
 - 5th Grade addition to Pierce Middle School
 - Early Ed addition to Milton High School site
 - New free-standing Early Ed (Pre-K & K) building
 - New free-standing K-5 school

Options



Potential
Additional
Classrooms

Educational Issues

- *What are the optimal average class sizes for each grade?; should there be maximum class sizes?*
- *Centralized PreK, Kindergarten vs. K-5 Elementary Schools?*
- *Desired Grade Configuration: current? or K-4/ 5-8/ 9-12? or K-4/ 5-7/ 8-12*
- *Is a 4-section school the optimal size?*

Next Steps

- Review/ expand/ confirm list of options
- Discuss Educational issues
- Evaluate pro's & con's of preliminary options
- Develop option plans, site plans, 3D, conceptual costs
- Evaluate, recommend long & short term option(s)
- Summarize, present results

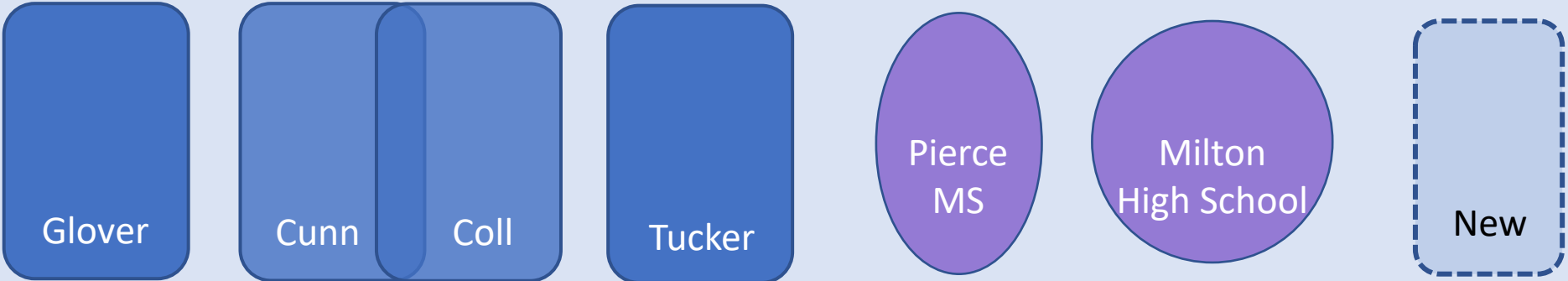
Elementary Space Needs Study

Milton Public Schools

Thank You!

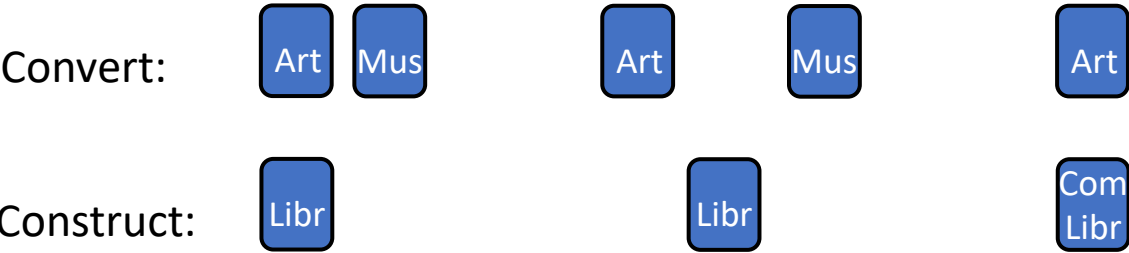
DRA

Options



Potential
Additional
Classrooms

Short-term

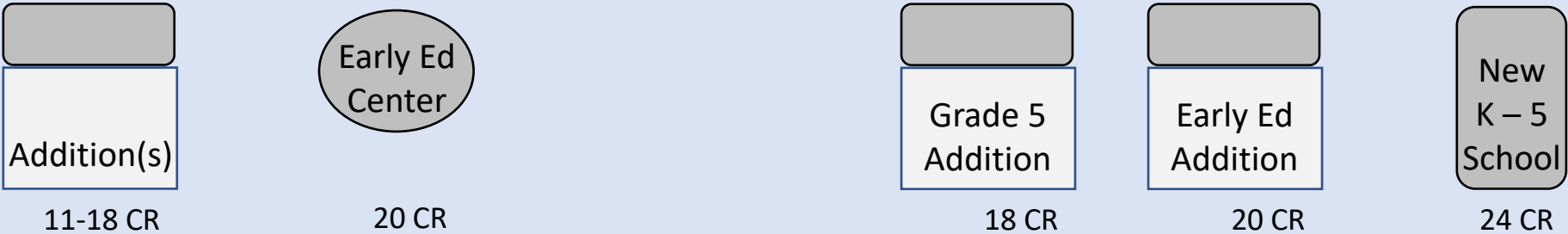


5

3

8

Long-term



11-24