

## Proposed Green Infrastructure – Collicott School

Chase Berkeley PE - Milton DPW Director

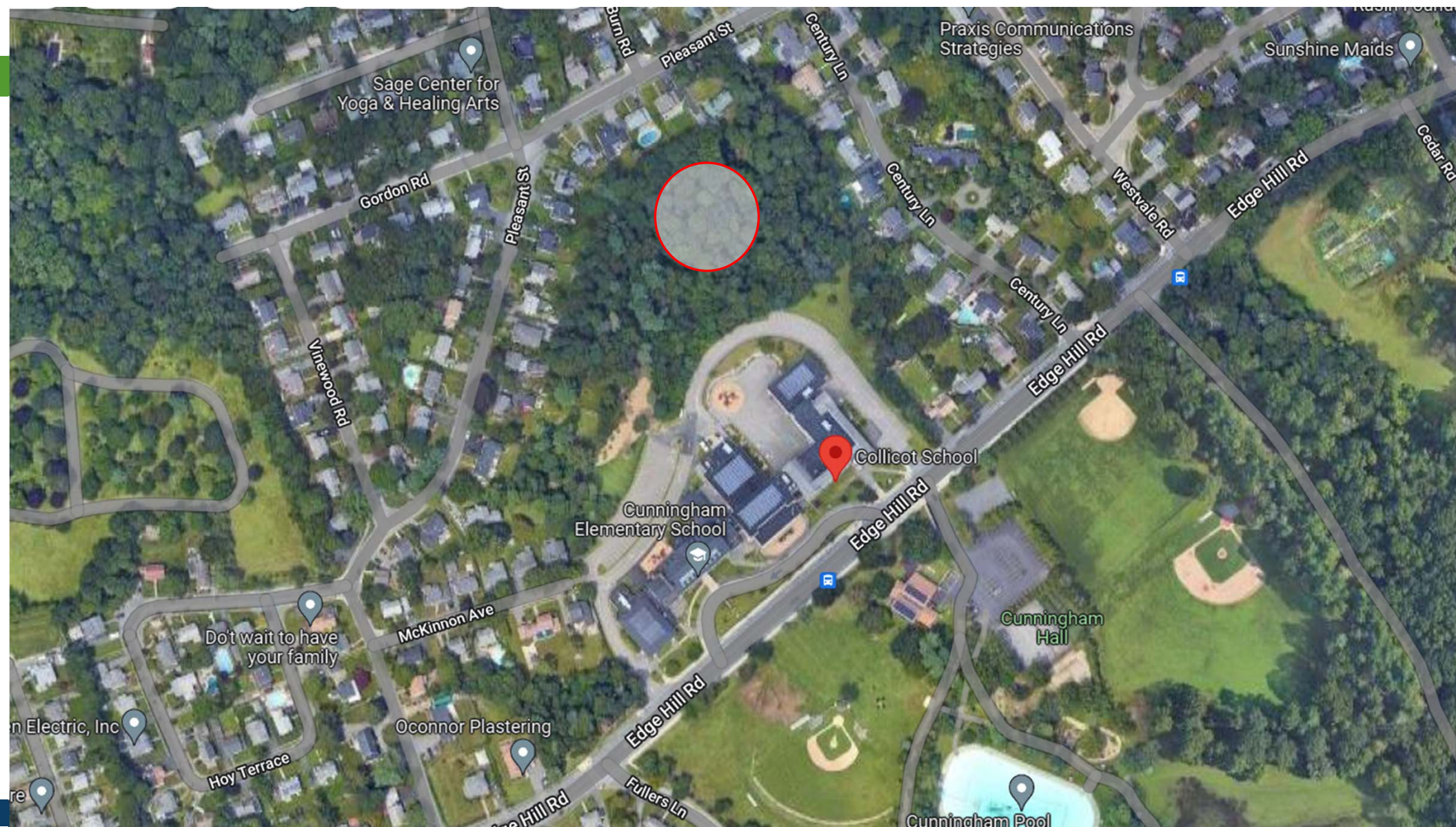
Marina Fernandes PE, LEED AP – Milton Town Engineer

Meera Patel – Environmental Coordinator

Jennifer Johnson PE, CFM, CPSWQ, LEED AP – Nitsch Engineering

June 1, 2022

Building better communities with you







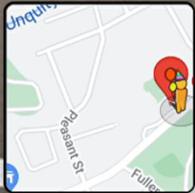




80 Edge Hill Rd  
Milton, Massachusetts

Google

Street View - Jul 2019



Google

Image capture: Jul 2019 © 2022 Google United States Terms Privacy Report a problem





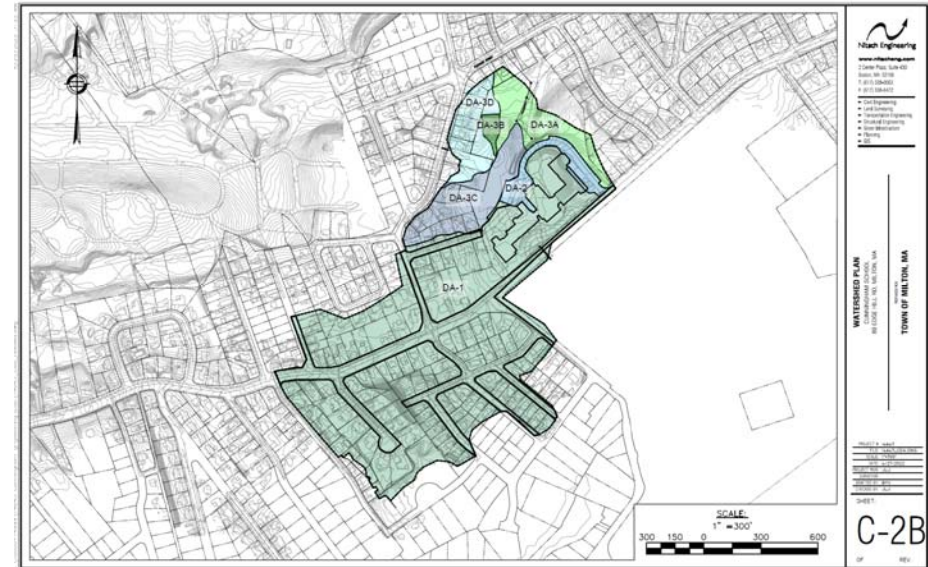






# Design Considerations

- Reduce non-point source pollution to Unquity Brook;
  - Provide treatment for drainage area upstream of the site;
- Maintain the existing grading and mature tree cover as much as possible;
- Enhance trails and universal accessibility;
- Provide outdoor learning opportunities;
- Minimize ponding to a depth below 18 inches for the design storm for less than 48 hours after rainfall



Infiltration Basin at Gibbon's School in Stoughton



## What's Next?

- May – Final Design based on CZM and Town Input
- June 1<sup>st</sup> – School Committee Meeting for Use of Land
- June – Closing of the Grant
- Please visit website for more information:  
<https://www.townofmilton.org/stormwater-management/pages/school-bmp>