



*New England School Development Council*

**Milton Public Schools  
Milton, MA**

**2022-23 Enrollment Projection Report**

# Table of Contents

Section	Page
Enrollment Summary.....	1
Historical Enrollment Table.....	2
Historical Enrollment Graph.....	3
Projected Enrollment Table.....	4
Projected Enrollment Graph.....	5
Historical & Projected Enrollment Graph.....	6
Historical & Projected Enrollment in Grade Combinations Line Graph.....	7
Historical & Projected Enrollment in Grade Combinations Stacked Column Graph.....	8
Birth to Kindergarten Relationship Graph.....	9
Additional Information .....	10
New England's PK-12 Enrollment Trends.....	11
Reliability and Use of this Document .....	12

# Enrollment Summary

The global pandemic continues to influence our nation's public health and economic stability in unpredictable ways. As such, it is still too early to identify many of the factors that could impact school enrollments. Over the past school year, we have seen fluctuations in the real estate market and job trends, which have impacted student attendance patterns. Moreover, during the past school year, we have seen how school enrollment patterns can differ substantially from one district to another, with some districts losing students while others experience an influx of students.

We are pleased to send you this report displaying the past, present, and projected enrollments for the District. These ten-year projections are designed to provide the District with yearly, up-to-date enrollment information that can be used by boards and administrators for effective planning and allocation of resources. Included in this report are graphs representing historical and projected grade-by-grade enrollments, as well as historical and projected enrollments in grade combinations. We have received the figures given to us by the District, and we assume that the method of collecting the enrollment data has been consistent from year to year.

Enrollment projections are more reliable in Years #1-4 in the future and less reliable in the "out-years." Projections six to ten years out may serve as a guide to future enrollments and are useful for planning purposes. In light of this, NESDEC has added a "Second Semester refresher" enrollment projection at no cost to affiliates. (For more information, please refer to the Reliability and Use of This Document section).

The NESDEC enrollment projection fell within 87 students of the K-12 total, 4,278 students projected vs. 4,191 enrolled. Ratios have been adjusted.

Births decreased by -11 from a previous ten-year average of 278 to a projected average of 267. In most districts, enrollments in Grades 1-8 are very stable environments. However, there have been declines in 7 of the 8 most recent years, leading to a net decline averaging -44 students per year.

Over the next three years, K-5 enrollments are projected to decrease by -85 students, Grades 6-8 enrollments are projected to increase by 16 students, and Grades 9-12 enrollments are projected to decrease by -17 students, as students move through the grades.



# Historical Enrollment

School District: Milton, MA

11/9/2022

Historical Enrollment By Grade																			
Birth Year	Births*	School Year	PK	K	1	2	3	4	5	6	7	8	9	10	11	12	UNGR	K-12	PK-12
2007	282	2012-13	101	323	331	337	349	329	295	321	310	266	236	237	234	268	0	3836	3937
2008	272	2013-14	91	314	339	323	337	339	333	311	294	305	244	244	234	228	1	3846	3937
2009	264	2014-15	84	350	341	352	326	327	344	337	289	290	262	247	236	226	6	3933	4017
2010	258	2015-16	125	335	363	349	346	335	343	328	300	273	248	262	255	230	6	3973	4098
2011	248	2016-17	139	365	337	371	351	353	338	329	289	299	240	240	263	239	5	4019	4158
2012	293	2017-18	136	356	373	348	363	357	355	322	303	286	272	238	240	263	1	4077	4213
2013	289	2018-19	134	356	373	381	355	362	350	342	300	296	270	272	235	247	0	4139	4273
2014	324	2019-20	137	372	377	383	399	362	366	351	324	305	269	277	272	233	6	4296	4433
2015	262	2020-21	100	309	365	359	385	393	347	340	308	306	291	273	273	275	9	4233	4333
2016	288	2021-22	122	350	335	375	372	392	392	323	321	293	266	285	279	289	15	4287	4409
2017	272	2022-23	147	342	365	345	379	365	381	366	287	305	247	263	277	269	7	4198	4345

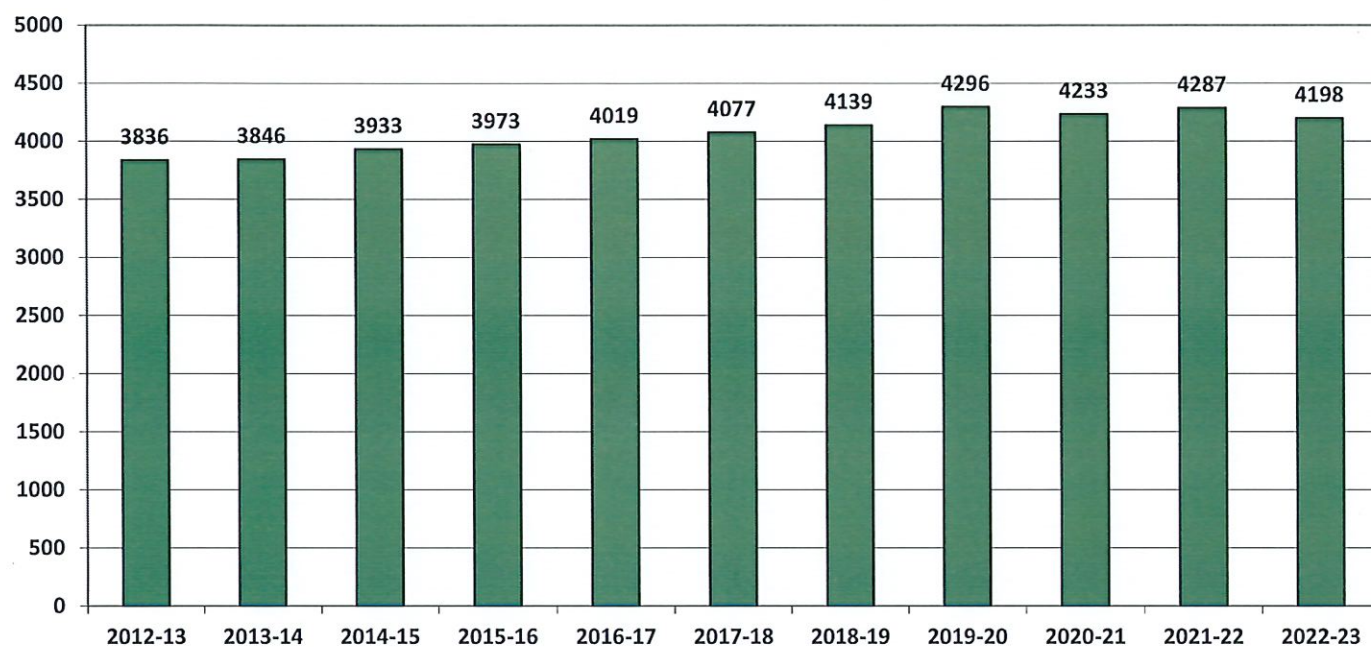
\*Birth data provided by Public Health Vital Records Departments in each state.

Historical Enrollment in Grade Combinations									
Year	PK-5	K-5	PK-8	K-8	5-8	6-8	7-8	6-12	9-12
2012-13	2065	1964	2962	2861	1192	897	576	1872	975
2013-14	2076	1985	2986	2895	1243	910	599	1860	950
2014-15	2124	2040	3040	2956	1260	916	579	1887	971
2015-16	2196	2071	3097	2972	1244	901	573	1896	995
2016-17	2254	2115	3171	3032	1255	917	588	1899	982
2017-18	2288	2152	3199	3063	1266	911	589	1924	1013
2018-19	2311	2177	3249	3115	1288	938	596	1962	1024
2019-20	2396	2259	3376	3239	1346	980	629	2031	1051
2020-21	2258	2158	3212	3112	1301	954	614	2066	1112
2021-22	2338	2216	3275	3153	1329	937	614	2056	1119
2022-23	2324	2177	3282	3135	1339	958	592	2014	1056

Historical Percentage Changes			
Year	K-12	Diff.	%
2012-13	3836	0	0.0%
2013-14	3846	10	0.3%
2014-15	3933	87	2.3%
2015-16	3973	40	1.0%
2016-17	4019	46	1.2%
2017-18	4077	58	1.4%
2018-19	4139	62	1.5%
2019-20	4296	157	3.8%
2020-21	4233	-63	-1.5%
2021-22	4287	54	1.3%
2022-23	4198	-89	-2.1%
Change		362	9.4%

## Historical Enrollment

K-12, School Years 2012-13 to 2022-23





# Projected Enrollment

School District: Milton, MA

11/9/2022

Enrollment Projections By Grade*																			
Birth Year	Births*	School Year	PK	K	1	2	3	4	5	6	7	8	9	10	11	12	UNGR	K-12	PK-12
2017	272	2022-23	147	342	365	345	379	365	381	366	287	305	247	263	277	269	7	4198	4345
2018	255	2023-24	148	310	354	372	351	379	360	362	331	273	273	246	261	279	7	4158	4306
2019	291	2024-25	149	354	321	361	378	351	373	342	327	314	244	271	244	263	7	4150	4299
2020	252	2025-26	150	307	367	327	367	378	346	354	309	311	281	243	269	246	7	4112	4262
2021	268	(prov.) 2026-27	151	326	318	374	333	367	372	329	320	294	278	279	241	271	7	4109	4260
2022	268	(est.) 2027-28	152	326	338	324	380	333	361	353	297	304	263	276	277	243	7	4082	4234
2023	267	(est.) 2028-29	153	325	338	345	330	380	328	343	319	282	272	262	274	279	7	4084	4237
2024	269	(est.) 2029-30	154	328	337	345	351	330	374	312	310	303	252	270	260	276	7	4055	4209
2025	265	(est.) 2030-31	155	322	340	344	351	351	325	355	282	295	271	251	268	262	7	4024	4179
2026	267	(est.) 2031-32	156	325	334	347	350	351	346	309	321	268	264	269	249	270	7	4010	4166
2027	267	(est.) 2032-33	157	325	337	341	353	350	346	329	279	305	240	263	267	251	7	3993	4150

Note: Ungraded students (UNGR) often are high school students whose anticipated years of graduation are unknown, or students with special needs - UNGR not included in Grade Combinations for 7-12, 9-12, etc.

Based on an estimate of births

Based on children already born

Based on students already enrolled

\*Birth data provided by Public Health Vital Records Departments in each state.

Projected Enrollment in Grade Combinations*									
Year	PK-5	K-5	PK-8	K-8	5-8	6-8	7-8	6-12	9-12
2022-23	2324	2177	3282	3135	1339	958	592	2014	1056
2023-24	2274	2126	3240	3092	1326	966	604	2025	1059
2024-25	2287	2138	3270	3121	1356	983	641	2005	1022
2025-26	2242	2092	3216	3066	1320	974	620	2013	1039
2026-27	2241	2090	3184	3033	1315	943	614	2012	1069
2027-28	2214	2062	3168	3016	1315	954	601	2013	1059
2028-29	2199	2046	3143	2990	1272	944	601	2031	1087
2029-30	2219	2065	3144	2990	1299	925	613	1983	1058
2030-31	2188	2033	3120	2965	1257	932	577	1984	1052
2031-32	2209	2053	3107	2951	1244	898	589	1950	1052
2032-33	2209	2052	3122	2965	1259	913	584	1934	1021

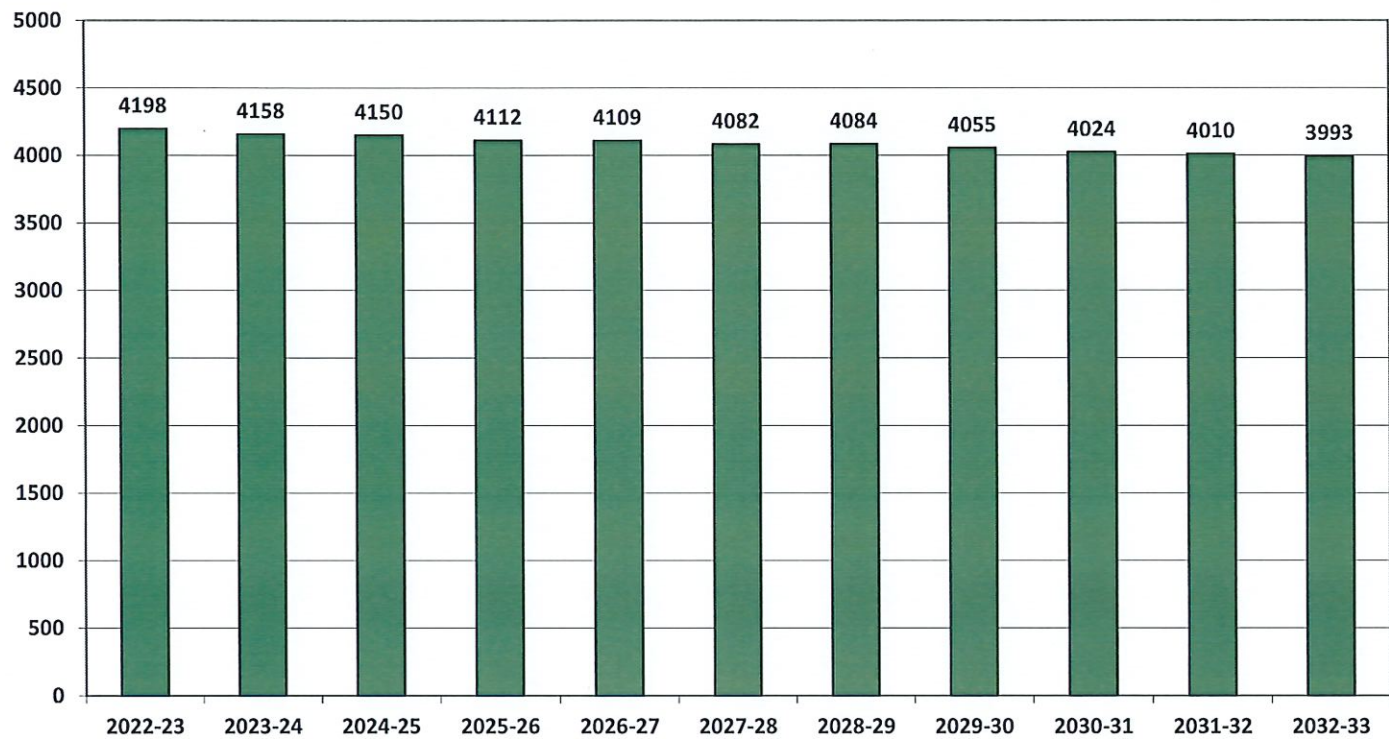
Projected Percentage Changes			
Year	K-12	Diff.	%
2022-23	4198	0	0.0%
2023-24	4158	-40	-1.0%
2024-25	4150	-8	-0.2%
2025-26	4112	-38	-0.9%
2026-27	4109	-3	-0.1%
2027-28	4082	-27	-0.7%
2028-29	4084	2	0.0%
2029-30	4055	-29	-0.7%
2030-31	4024	-31	-0.8%
2031-32	4010	-14	-0.3%
2032-33	3993	-17	-0.4%
Change		-205	-4.9%

\*Projections should be updated annually to reflect changes in in/out-migration of families, real estate sales, residential construction, births, and similar factors.

**NESDEC**

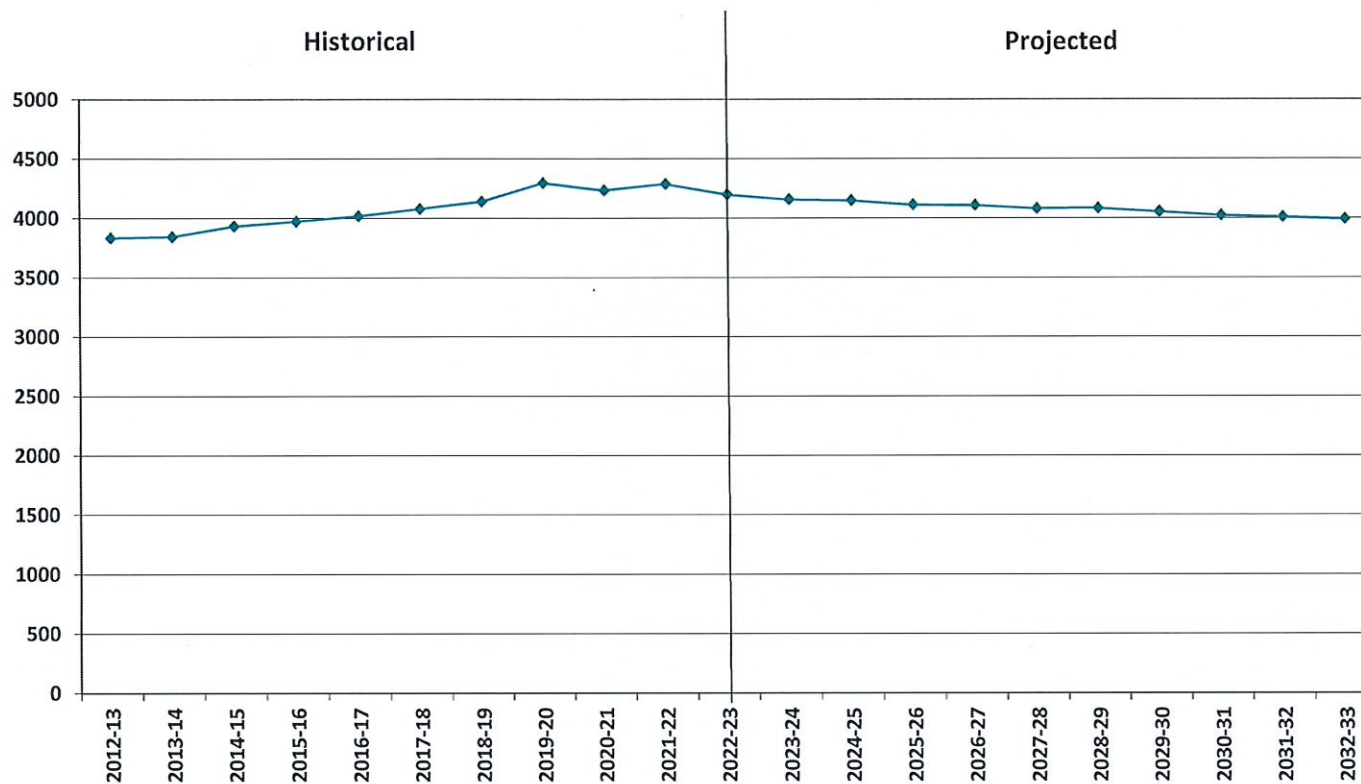
# Projected Enrollment

K-12, School Years 2022-23 to 2032-33



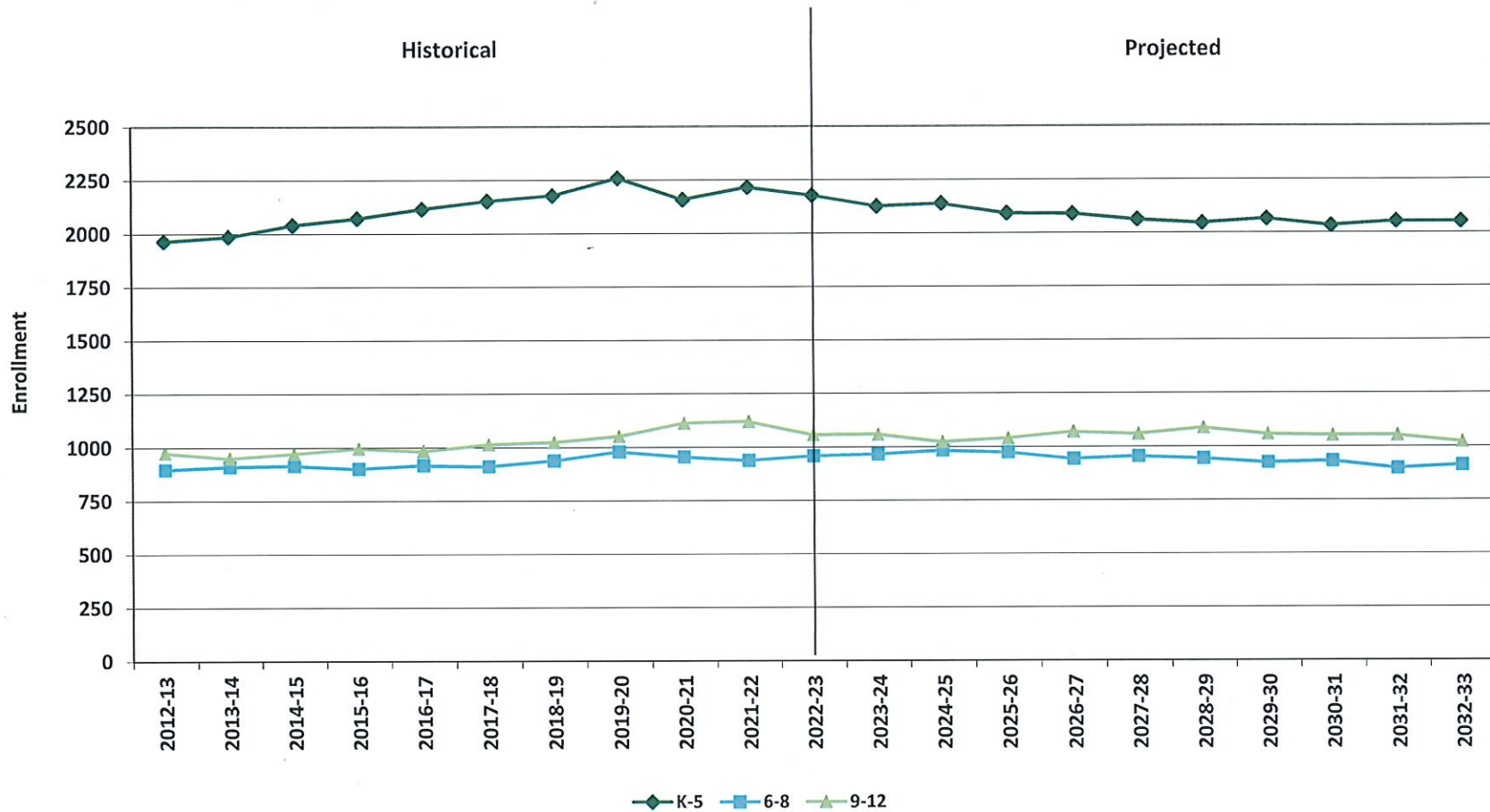


## Historical & Projected Enrollment

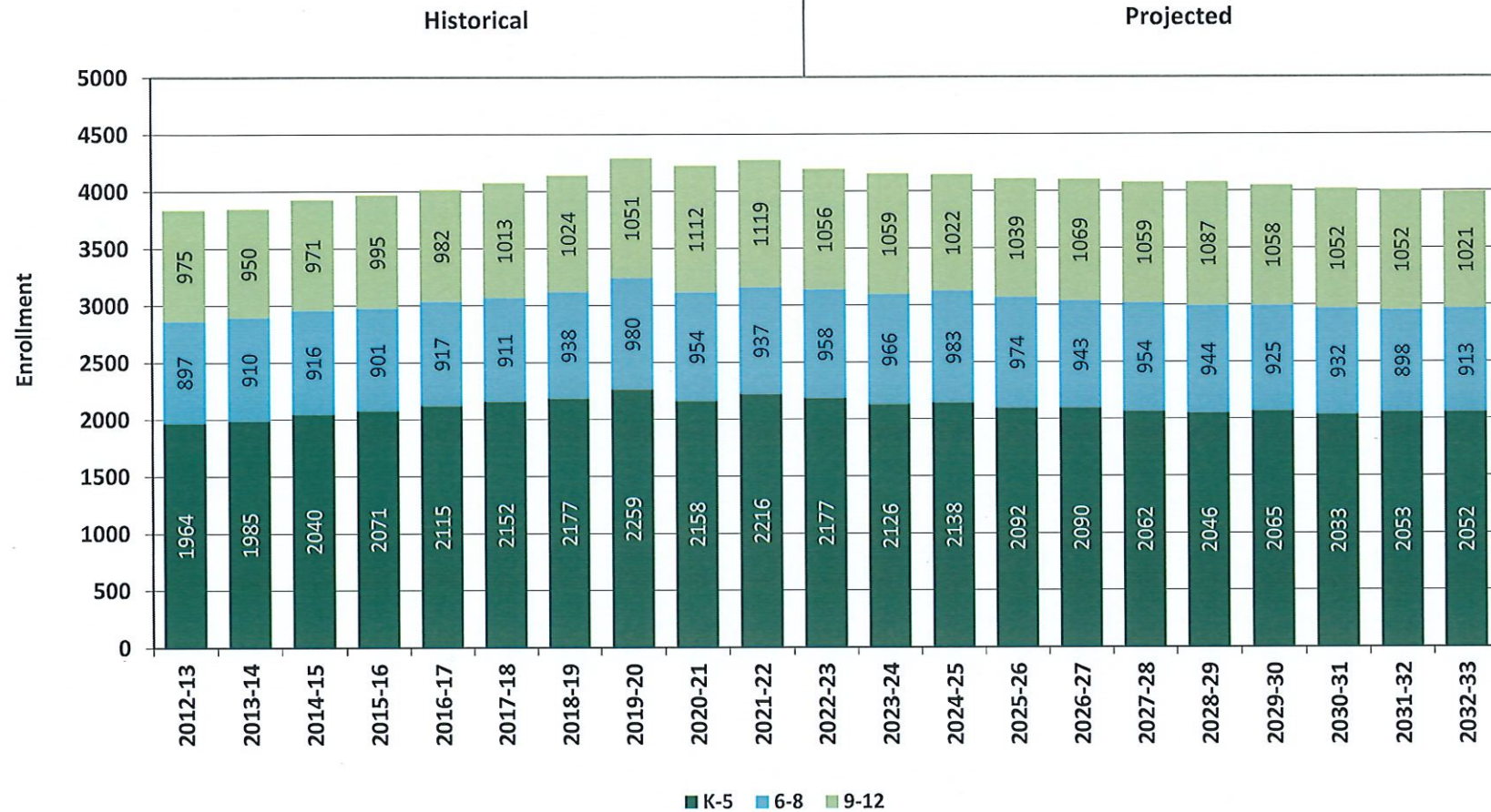




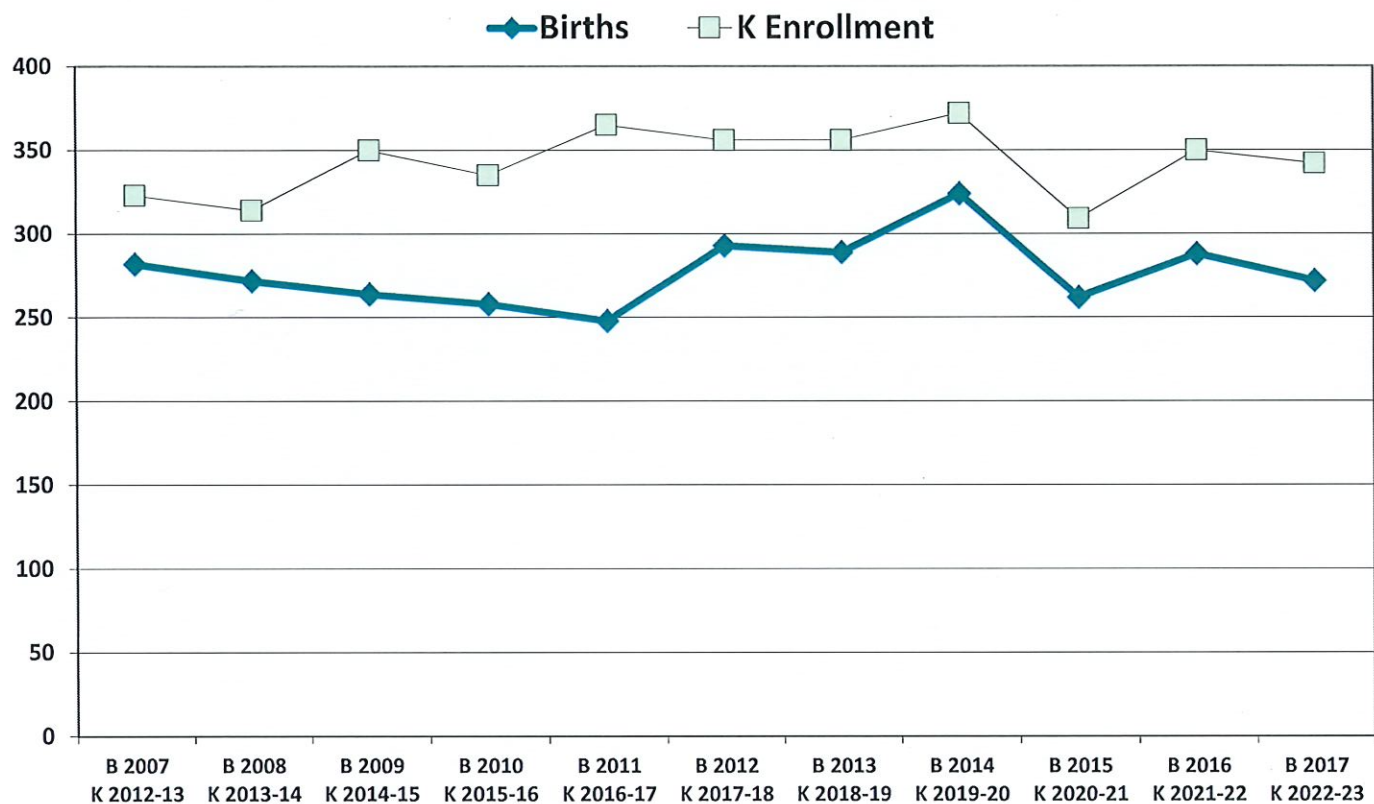
## Historical & Projected Enrollments in Grade Combinations



# Historical & Projected Enrollments in Grade Combinations



# Birth-to-Kindergarten Relationship



©New England School Development Council • 508-481-9444 • [www.nesdec.org](http://www.nesdec.org)



## Additional Information

Building Permits Issued (Source: HUD)		
Year	Single-Family	Multi-Units
2012	5	0
2018	20	0
2019	17	2
2020	22	0
2021	25	8
2022	10 to date	0 to date

Enrollment History*		
Year	Career-Tech 9-12 Total	Non-Public K-12 Total
2012-13	48	1046
2018-19	n/a	930
2019-20	34	882
2020-21	35	939
2021-22	42	956
2022-23	38	n/a

Residents in Non-Public Independent and Parochial Schools (General Education)*														
Jan. 1, 2022	K	1	2	3	4	5	6	7	8	9	10	11	12	K-12 TOTAL
	30	24	30	24	33	48	60	113	122	130	102	124	116	956

K-12 Home-Schooled Students*	
2022	18

K-12 Residents in Charter or Magnet Schools, or Choiced-out*	
2022	7

K-12 Special Education Outplaced Students*	
2022	41

K-12 Tuitioned-In, Choiced-In, & Other Non-Residents*	
2022	n/a

\*The above data were provided by the District, with the exception of building permit data (provided by HUD).  
"n/a" signifies that information was not provided by District.



## New England's PK-12 Enrollment Trends

From 2020 to 2030, the US Department of Education anticipates changes in PK-12 enrollment of -2.4% in the South, -6.5% in the West, -3.8% in the Midwest, -6.2% in the Northeast, and a total of -4.3% nationwide.

State	Fall 2020 PK - 12	Fall 2030 Projected	PK-12 Decline	% Change 2020-2030
CT	509,058	475,600	-33,458	-6.6%
ME	172,455	161,800	-10,655	-6.2%
MA	921,712	879,900	-41,812	-4.5%
NH	169,027	144,600	-24,427	-14.5%
RI	139,184	130,200	-8,984	-6.5%
VT	82,401	74,600	-7,801	-9.5%

**Source:** U.S. Department of Education, National Center for Education Statistics,  
*Enrollment In Public Schools fall 1990 to fall 2030*, Table 203.20, March 2022.

Although most New England Districts are seeing a decline in the number of births, NESDEC's experience indicates that the impact on enrollment varies from District to District. Almost half of New England Districts have been growing in PK-12 enrollment, and a similar number are declining (often in rural areas), with the other Districts remaining stable.



## Reliability and Use of this Document

### PROJECTION METHODOLOGY

Cohort component (survival) technique is a frequently used method of preparing enrollment forecasts. NESDEC uses this method, but modifies it in order to move away from forecasts that are wholly computer- or formula-driven. Such modification permits the incorporation of important, current district-specific information into the generation of enrollment forecasts (such as in/out-migration of students, resident births, HUD-reported building permits, etc.). Percentages are calculated from the historical enrollment data to determine a reliable percentage of increase or decrease in enrollment between any two grades. For example, if 100 students enrolled in Grade 1 in 2018-19 increased to 104 students in Grade 2 in 2019-20, the percentage of survival would be 104%, or a ratio of 1.04. Ratios are calculated between each pair of grades or years in school over several recent years.

After study and analysis of the historical ratios, and based upon a reasonable set of assumptions regarding births, migration rates, retention rates, etc., ratios most indicative of future growth patterns are determined for each pair of grades. The ratios thus selected are applied to the present enrollment statistics to project into future years. The ratios are the key factors in the reliability of the projections, assuming validity of the data at the starting point.

### RELIABILITY OF ENROLLMENT PROJECTIONS

Projections can serve as useful guides to school administrators for educational planning. Enrollment projections are more reliable in Years #1-4 in the future and less reliable in the "out-years." Projections six to ten years out may serve as a guide to future enrollments and are useful for planning purposes, but they should be viewed as subject to change given the likelihood of potential shifts in underlying assumptions/trends, such as student migration, births as they relate to Kindergarten enrollment, and other factors.

Projections that are based upon **the children who already are in the district** (the current K-12 population only) will be the most reliable. The second level of reliability will be for those children **already born into the community but not yet old enough to be in school**. The least reliable category is the group for which an estimate must be made to **predict the number of births**, thereby adding additional uncertainty. See these three multi-colored groupings on the "Projected Enrollment" tab.

Annual updates allow for early identification of recent changes in historical trends. When the actual enrollment in a grade is significantly different (higher or lower) from the projected number, it is important (yet difficult) to determine whether this is a one-year aberration or whether a new trend may have begun. **In light of this possibility, NESDEC urges all school districts to have updated enrollment forecasts developed by NESDEC each October.** This service is available at no cost to affiliated school districts.

### USING THIS INFORMATION ELECTRONICALLY

If you would like to extract the information contained in this report for your own documents or presentations, you can use screenshots, which can be inserted into PowerPoint slides, Word documents, etc. Because screenshots create graphics, the image is not editable. Please feel free to contact us if you need assistance in this matter, by phone (508-481-9444) or by email ([ep@nesdec.org](mailto:ep@nesdec.org)).