



Thanks to Ms. Mitchell's classes who are still cleaning up around Pierce! Pictured above is her B period class, who filled 6 bags of trash.

Families HELPING Families

Each year our guidance counselors identify Pierce families in need and collect gift cards to be distributed to them for the holidays. This program, Families Helping Families, provides an opportunity for your family to bring a little bit of holiday spirit to another family at Pierce Middle School in the most anonymous and quiet way. If you are interested in supporting this effort, please bring your gift card donation to the main office at Pierce Middle School by December 12 and deposit it in the sealed box. We recommend gift cards to Star Market, Shaws, Stop and Shop, Target and Old Navy but will, of course, accept and pass on gift cards from all stores. Our guidance staff will make sure that these gift cards find their way to needy Pierce families this holiday season. Please know how much we appreciate your generosity!

Any families who are in need of support this holiday season can contact Marti McKenna, our Family Outreach Liaison, or any of the Pierce guidance counselors (see contact information below).

PIERCE MIDDLE SCHOOL WRESTLING

12/6/21 THROUGH 1/31/22



Grades 6-8

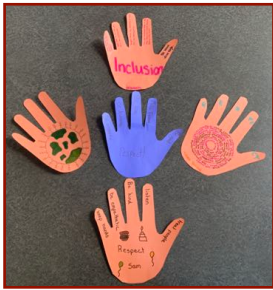
Mondays: 7:15 to 8:15pm
Tuesdays: 3:00 to 4:30pm
Thursdays: 5:30 to 6:30pm

Milton High School Copeland Field House

Register during the 1st Sessions the week of 12/6

Ted Carroll - Milton High Head Wrestling Coach
617-648-6005 • tedandkatecarroll@comcast.net

* Masks Required



Inclusive School Week

To celebrate Inclusive Schools Week, students created hands during Connection Time to show what inclusion means to them. Pictured left are some of Ms. McEvoy's student's creations.



Calm Classroom Check-In	
Activity Category: Breathe Focus Relax Move	
Before, I was feeling:	Now, I am feeling:
Write a word:	Write a word:
Tired	Relaxed
Draw a picture:	Draw a picture:
Before, I was in the <u>blue</u> zone.	Now, I am in the <u>green</u> zone.
Green Yellow Red	Blue Green Yellow Red

Students in Ms. Pezzote's class practicing a Calm Classroom exercise.

COUNSELOR'S CORNER

Private School Application Reminder: You need to contact your child's grade level guidance counselor **at least 3 weeks prior to the application deadline date** via email or phone when you have made the decision that your child is going to apply to a private/parochial school.

MHS Grade 8 Information Night

Please join us on Thursday, December 16 at 6:30pm in the Milton High School Auditorium (25 Gile Rd) for an opportunity to learn about Milton High School course offerings, academic and extracurricular programs, athletics and activities that prepare students for college and life beyond high school. Current 8th grade students, parents and guardians are invited to attend this informational session and tour of Milton High School. If unable to attend, the presentation and a virtual tour of the building will be provided.

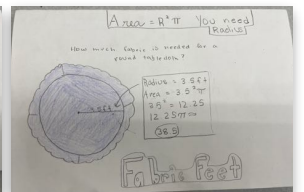
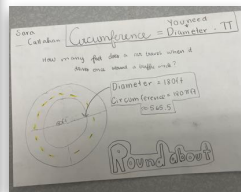
What's Happening in 7th Grade Math?



7th Grade Circles Review. The students worked on Area and Circumference of a circle.

CCSS.MATH.CONTENT.7.G.B.4

Know the formulas for the area and circumference of a circle and use them to solve problems; give an informal derivation of the relationship between the circumference and area of a circle.



Milton High School Post Secondary Planning Night

Thursday, December 9, 2021
6:15-8:30 pm

Parents of students in grades 8-11 welcome

Financial Aid for College

Naviance 101

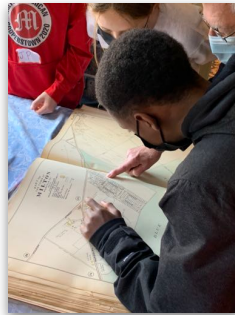
College Application Procedures

Admissions Advisory

College Athletics

College Testing: ACT vs SAT

25 Gile Rd, Milton, MA 02186



The Milton Historical Society hosted students from one of Ms. Hartgering's classes. Students read a book where the main character uses a Historical Society for research, and the students also learned a great deal from our visit to the Suffolk Resolves House. They got an in-depth explanation of Milton's amazing history and were able to examine objects and archives such as maps and newspapers. We're so grateful to the Historical Society, and the Milton Police Department for providing transportation.

UPCOMING EVENTS

SCHEDULE OF DAYS THIS WEEK:

Monday - D2, Tuesday - D3, Wednesday - D4, Thursday - DX, Friday - D5

December 9...Early Release Day; December 24-January 1...Winter Break

HELPFUL RESOURCES



Ms. Perry - School Nurse
• bperry@miltonps.org or 617-696-4575



Marti McKenna, Family Outreach Liaison
• mmckenna@miltonps.org or 617-980-7343



Ms. Benjamin - Gr. 6 Guidance Counselor
• ebenjamin@miltonps.org



Ms. Jaquette - Gr. 7 Guidance Counselor
• ejquette@miltonps.org



Ms. Veldran - Gr. 8 Guidance Counselor
• lveldran@miltonps.org