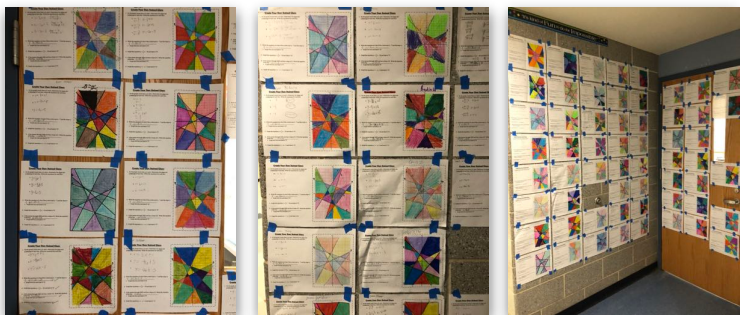


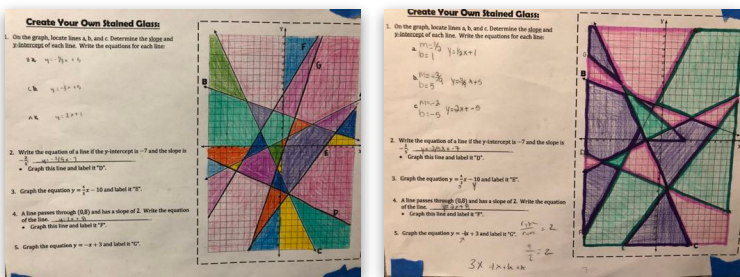


## What's Happening in 8th Grade Math?

Students in 8th grade math practiced writing equations and graphing lines with positive and negative slopes in slope-intercept form,  $y=mx+b$ . When completed, the correctly graphed lines created a "stained glass window."



8.EE6: Use similar triangles to explain why the slope  $m$  is the same between any two distinct points on a non-vertical line in the coordinate plane; derive the equation  $y = mx$  for a line through the origin and the equation  $y = mx + b$  for a line intercepting the vertical axis at  $b$ .



## COUNSELOR'S CORNER

Private School Application Reminder: You need to contact your child's grade level guidance counselor **at least 3 weeks prior to the application deadline date** via email or phone when you have made the decision that your child is going to apply to a private/parochial school.

## LOST & FOUND

Please be sure to check the lost & found this week. It is located outside the cafe by the elevator. All unclaimed items will be donated to charity at the close of school on 12/23/2021.



## INCLUSION ACTIVITY

On Friday students worked together to create their own gingerbread houses!

## Winter Concert



The Pierce chorus, band and strings ensemble did an amazing job at this year's Winter Concert!



On December 9, all 8th graders participated in activities related to hate speech and the history of the n-word. The day began with a presentation, created by 8th grade English teacher Ms. Jarrett. Students then broke into groups and participated in guided discussions on the topics. To finish the day, students chose to continue the discussion, create a poster, participate in collaborative activities, or create a video. The students did an amazing job participating in discussions on these very serious topics. This lesson and activities will be brought to 7th and 6th graders following winter break.



## UPCOMING EVENTS

December 24-January 1...Winter Break; January 17...MLK, Jr. Day - No School; January 21...End of Term 2

### SCHEDULE OF DAYS THIS WEEK:

Monday - D4, Tuesday - D5, Wednesday - D6, Thursday - D7, Friday - XX

## HELPFUL RESOURCES



Ms. Perry - School Nurse  
• [bperry@miltonps.org](mailto:bperry@miltonps.org) or 617-696-4575



Marti McKenna, Family Outreach Liaison  
• [mmckenna@miltonps.org](mailto:mmckenna@miltonps.org) or 617-980-7343



Ms. Benjamin - Gr. 6 Guidance Counselor  
• [ebenjamin@miltonps.org](mailto:ebenjamin@miltonps.org)



Ms. Jaquette - Gr. 7 Guidance Counselor  
• [ejquette@miltonps.org](mailto:ejquette@miltonps.org)



Ms. Veldran - Gr. 8 Guidance Counselor  
• [lveldran@miltonps.org](mailto:lveldran@miltonps.org)