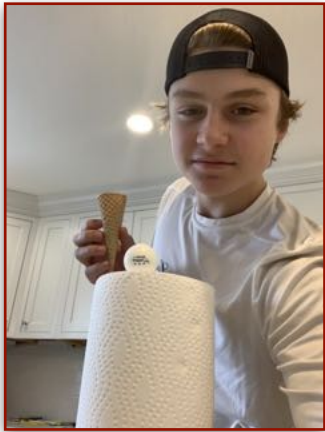


## Not all classrooms have four walls!

We may not be in the school building, but our students are still learning! Pierce teachers are working hard to create and post amazing lessons, and our students are doing a great job completing them. Check out some of the creative learning that is happening.

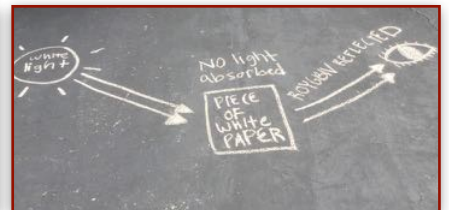


8th graders are participating in a math scavenger hunt - selfies with cylinders, cones, spheres, and right angles they find in their homes.



The sixth grade science classes were given a choice board this week to select assignments for their remote learning.

- Design a pet rock and complete a pet registration form using your knowledge of earth history; then run an acid test to determine the environment the rock may have formed in.
- Create a chalk diagram showing a major concept we covered in class.
- Engineering Design Challenge: Design an obstacle course and time yourself completing it.



Laughter Is A Disease  
Written By: Lucie B. Lloyd-Farber

Laughter is like a disease  
The cause  
And the cure

It can be spread by no physical contact  
Only the contact of your soul and heart

Laughter is like a disease  
The cause  
And the cure

It is hard to stop once you have it in your system

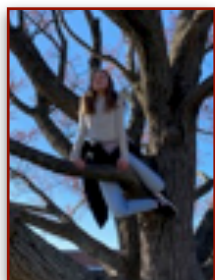
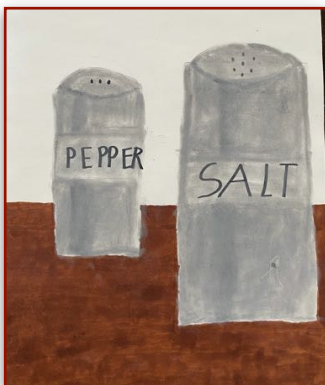
Laughter is like a disease  
The cause  
And the cure

It is the medicine that heals our hearts  
As long as we share it with others

Laughter is like a disease  
The cause  
And the cure



Students are also keeping busy cooking, creating art and exercising!



## Help Prevent COVID-19 with Social Distancing

**Call/Facetime/online chat with friends and family.**

**Stay home as much as you can.**

**If you must go out:**

- Don't gather in groups
- Stay 6 feet away from others
- Don't shake hands or hug

**And please continue to wash your hands frequently.**

[www.mass.gov/COVID19](http://www.mass.gov/COVID19) | Call 2-1-1

Massachusetts Department of Public Health

## DON'T FORGET TO REACH OUT IF YOU NEED ASSISTANCE!

Adjustment Counselors' Google Classroom  
• Code luzd6uw

Marti O'Keefe McKenna, MPS Family Outreach Liaison  
• 617-980-7343 or [mmckenna@miltonps.org](mailto:mmckenna@miltonps.org)

Guidance Counselors  
• Grade 6 - [lveldran@miltonps.org](mailto:lveldran@miltonps.org)  
• Grade 7 - [ebenjamin@miltonps.org](mailto:ebenjamin@miltonps.org)  
• Grade 8 - [ejacquette@miltonps.org](mailto:ejacquette@miltonps.org)

## UPCOMING EVENTS

April 10...Good Friday - No School; April 20-24...April Vacation; May 25...Memorial Day - No School

## SCHEDULE OF DAYS UPON RETURN ON MAY 4:

Monday - D2, Tuesday - D3, Wednesday - D4, Thursday - D1, Friday - D2