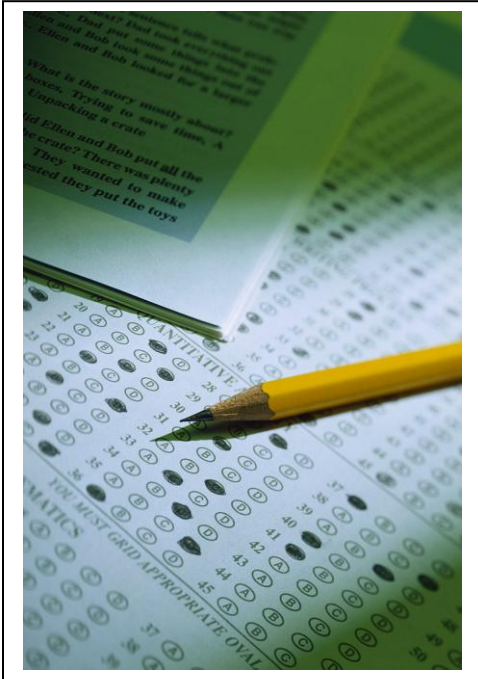


# Milton High School



## SAT Prep Courses at Milton High

*Fall 2012*

Milton High School is pleased to offer SAT Prep courses to students who are looking to improve their SAT scores.

Students can sign up for a **Verbal Prep course**, a **Math Prep course**, or **both courses scheduled to accommodate a busy schedule**.

Each course is held at Milton High School. Students will receive a free copy of the College Board's Official SAT Guide.

*"The program is an outstanding resource for any student preparing to take the SAT. The individualized instruction combined with the official study guide will provide all students with effective approaches to take the SAT with confidence."*

- Kenneth Aubert, MHS Director of Guidance

Please see the specific course listings and course registration information on the following pages.

# MILTON HIGH SCHOOL SAT PREP PROGRAM

## Verbal SAT Prep Courses - \$50 per student

### Mondays

- **Mondays** from 2:30–4:30pm or 4:30-6:30pm
- 6 classes September 17-October 29<sup>th</sup> (Does not meet on October 8<sup>th</sup>)

### Saturdays

- **Saturdays** from 8:00–10:30am or 10:30am-1:00pm
- 5 classes September 29<sup>th</sup> – October 27<sup>th</sup>

## Math SAT Prep Courses - \$50 per student

### Mondays

- **Mondays** from 2:30–4:30pm or 4:30-6:30pm
- 6 classes September 17-October 29<sup>th</sup> (Does not meet on October 8<sup>th</sup>)

### Saturdays

- **Saturdays** from 8:00–10:30 am or 10:30 am-1:00pm
- 5 classes September 29<sup>th</sup> – October 27<sup>th</sup>

The schedule of courses is designed to lead up to the November 3<sup>rd</sup> SAT.

## Registration

**Register Online at [www.tinyurl.com/miltonadulted](http://www.tinyurl.com/miltonadulted)**

Select "SAT Prep"

Payable by checking acct or credit card

\*NOTE: If you are unable to register online, please contact Courtney Walsh at (617)696-4470 x5519 for assistance.

*Classes may be canceled due to weather. Please be sure to list a phone number and email address.*

**Please note that courses may be cancelled due to low enrollment.**

**Classes will be filled by order of receipt of registration.**